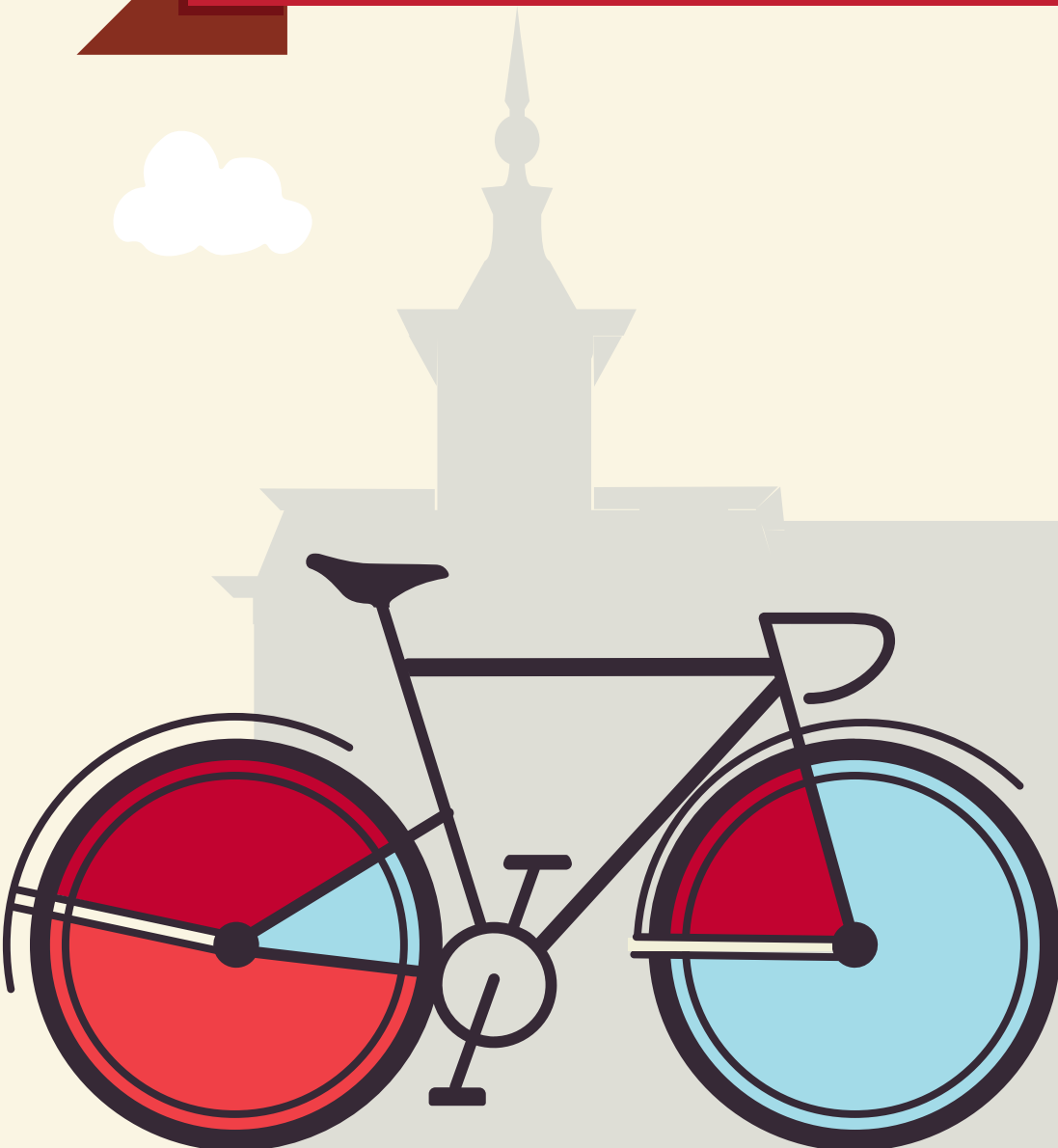


# YOUR GUIDE TO TRANSFERRING TO NORTH CENTRAL COLLEGE

**ROCK VALLEY COLLEGE**





This guide is based on the 2024-2025 Rock Valley College catalog, and the 2024-2025 North Central College catalog. North Central College reserves the right to alter any information listed in this guide, including the transferability of courses, without notice or obligation. For assistance with this guide, please call the Office of Admission at (630) 637-5800 or email at [admissions@noctrl.edu](mailto:admissions@noctrl.edu).

How to use this guide: This course substitution guide is designed to help you select courses at Rock Valley College if you plan to transfer to North Central College. Working with your RVC advisor and NCC transfer admission counselor, refer to this guide to determine courses that meet North Central College requirements in our general education curriculum, academic major and minor requirements, and electives. Your NCC counselor can also provide a major planning worksheet. Listed below is a sample from this guide:

RVC Course Numbers, Titles, Credit					NCC Equivalent Course Numbers & Credit			NCC General Education Codes			Important Information about courses
DEPT	NUM	COURSE TITLE	CREDIT	IAI EQUIV	DEPT	NUM	CREDIT	GENERAL EDUCATION			COMMENTS
ANP	102	Intro Biological Anthr and Archaeology	3	S1 902	ANTH	165	3	SCI			
ANP	103	Introduction to Cultural Anthropology	3	S1 901N	ANTH	Elective	3	SOC	GLO		

The Cardinal Directions general education curriculum at North Central College is as follows, along with the general education codes you will find in this guide. Please note the column to the far right which indicates which of these requirements may be waived (or required) based on the level of education you achieve prior to transferring. For additional details, please reference the NC catalog: <http://catalog.noctrl.edu/content.php?catoid=26&navoid=2582>.

## CARDINAL DIRECTIONS CURRICULUM MAP

Requirement	General Education Code	Credit	Comments
Composition	COMP	4 credits	Met with A.A. or A.S. degree
Writing Intensive	WRI	4 credits	Met with A.A. or A.S. degree
Public Speaking	COM	4 credits	Met with A.A. or A.S. degree
Arts	ART	4 credits	Met with A.A. or A.S. degree
Humanities	HUM	4 credits	Met with A.A. or A.S. degree
Social Science	SOC	4 credits	Met with A.A. or A.S. degree
Science	SCI	4 credits	Met with A.A. or A.S. degree
Quantitative Analysis	QUA	4 credits	Met with A.A. or A.S. degree
Power Structures or Global Understanding	POW or GLO	4 credits	Met with A.A. or A.S. degree GLO may be met with Study Abroad at NCC
Ethical Dimensions	ETH	4 credits	Met with A.A. or A.S. degree
Well Being	WEL	2 credits	Met with A.A. or A.S. degree
Experiential (One of the following):	-Community Engaged Learning -Study Away/Study Abroad -Student Research -CARD 400 – Senior Seminar: Liberal Arts and Problems of Today	2 credits	Met with A.A. or A.S. degree
Career Readiness: Preparation and Experiential*	CARD 250 – Career Preparation CARD 300 – Career Experiential	4 credits total	*Must be taken at NC

- \*An equivalent 3-credit transfer course may be used to fulfill a General Education requirement.
- One course may fulfill multiple requirements.
- College Transfer Credits are courses taken at a college or university after graduating high school and not earned through AP, IB, or CLEP.
- Only 64 semester hours (96 quarter hours) may transfer from a 2-yr college. Developmental courses (under 100-level) do not transfer.
- Requirements met through an eligible A.A. or A.S. degree may also be met with an eligible A.A.S. degree only if applied to the B.A.S. degree.
- Students with less than 28 transferable hours will need to complete CARD 110, a 1-credit transition course.

**COURSE SUBSTITUTIONS FOR STUDENTS TRANSFERRING FROM ROCK VALLEY COLLEGE TO NORTH CENTRAL COLLEGE**

*Based on the 2022-2023 Rock Valley College Catalog and the 2024-2025 North Central College Catalog*

<i>Rock Valley College Courses</i>											<i>NCC Courses</i>			<i>NCC General Education and Comments</i>		
DEPT	NUM	COURSE TITLE	SEM CRED	IAI EQUIV	Dept	Number	Credit	GENERAL EDUCATION			COMMENT					
ANP	102	Intro Biological Anthropology and Archaeology	3	S1 902	ANTH	165	3	SCI								
ANP	103	Introduction to Cultural Anthropology	3	S1 901N	ANTH	Elective	3	SOC	GLO							
APT		Apprenticeship Programs			No	Credit	0				No credit transfers from this department					
ART	101	Drawing and Composition I	3		ARTD	120	3	ART								
ART	102	Drawing and Composition II	3		ARTD	220	3									
ART	103	Design I	3		ARTD	107	3									
ART	111	Painting I	3		ARTD	130	3	ART								
ART	121	Ceramics I	3		ARTD	150	3	ART								
ART	122	Ceramics II	3		ARTD	250	3									
ART	131	Introduction to Visual Arts	3	F2 900	ARTD	100	3	ART								
ART	141	Introduction to Non Western Visual Art	3	F2 903N	ARTD	Elective	3									
ART	201	Life Drawing	3		ARTD	225	3									
ART	203	Design II	3		ARTD	110	3	ART								
ART	212	Painting II	3		ARTD	230	3									
ART	216	Relief Printmaking	3		ARTD	210	3									
ART	251	History of Art I	3	F2 901	ARTH	100	3	ART	GLO							
ART	252	History of Art II	3	F2 902	ARTH	102	3	ART	GLO							
ATG	110	Financial Accounting	4		ACCT	201	4									
ATG	111	Managerial Accounting	4		ACCT	202	4									
ATG	120	Microcomputer Spreadsheet Appls in Accounting	2		No	Credit	0									
ATG	123	General Ledger Software Applications in Actg	2		No	Credit	0									
ATG	210	Cost Accounting	4		ACCT	307	4				May not use to fulfill 300-level req in major/minor					
ATG	215	Intermediate Accounting I	4		ACCT	317	4				May not use to fulfill 300-level req in major/minor					
ATG	216	Intermediate Accounting II	3		ACCT	318	4				May not use to fulfill 300-level req in major/minor					
ATG	218	Federal Income Tax	4		ACCT	Elective	4									
ATG	220	Fraud Detection and Deterrence	3		No	Credit	0									
ATG	298	Accounting Capstone	4		No	Credit	0									
ATM		Automotive Service Technology			No	Credit	0				No credit transfers from this department					
ATS	105	Introduction to Atmospheric Science	4	P1 905L	SCIE	Elective	4	SCI								
AVM		Aviation Maintenance Technology			No	Credit	0				No credit transfers from this department					
BIO	100	Introductory Human Biology	3	L1 904	BIOL	104	3	SCI								
BIO	103	Introductory Life Science	3	L1 900	BIOL	Elective	3	SCI								
BIO	104	Introductory Life Science Laboratory	1	L1 900L	BIOL	Elective	1	SCI			Only if BIO 103 is completed					
BIO	106	Environmental Biology	3	L1 905	BIOL	106	3	SCI								
BIO	107	Environmental Biology Laboratory	1	L1 905L	BIOL	106L	1	SCI			Only if BIO 106 is completed					
BIO	113	Plants and Society	4	L1 901L	BIOL	Elective	4	SCI								
BIO	140	Introduction to Evolution	3	L1 907	BIOL	Elective	3	SCI								
BIO	150	Microbes and Society	3	L1 903	BIOL	Elective	3	SCI								
BIO	152	Microbes and Society Laboratory	1	L1 903L	BIOL	Elective	1	SCI			Only if BIO 150 is completed					
BIO	162	Human Heredity	3	L1 906	BIOL	Elective	3	SCI								
BIO	171	Biology of Human Disease	3		BIOL	Elective	3	SCI								
BIO	185	Foundations of Anatomy and Physiology	5		BIOL	Elective	5	SCI								
BIO	201	Fundamentals of Biology I	4	L1 910L	BIOL	Elective	4	SCI								
BIO	202	Fundamentals of Biology II	4	L1 910L	BIOL	Elective	4	SCI								
BIO	274	Microbiology	4		BIOL	145	4									
BIO	281	Human Anatomy and Physiology I	4		BIOL	201	4									
BIO	282	Human Anatomy and Physiology II	4		BIOL	202	4									
BUS	101	Introduction to Business	3		SBEN	100	3	SOC	ETH	GLO						
BUS	103	Business Mathematics	3		No	Credit	0									
BUS	105	Consumer Economics/Personal Finance	3		SBEN	210	3	WEL								
BUS	131	Entrepreneurship Planning	3		BUSN	170	3									

**COURSE SUBSTITUTIONS FOR STUDENTS TRANSFERRING FROM ROCK VALLEY COLLEGE TO NORTH CENTRAL COLLEGE**

*Based on the 2022-2023 Rock Valley College Catalog and the 2024-2025 North Central College Catalog*

Rock Valley College Courses				NCC Courses			NCC General Education and Comments				
DEPT	NUM	COURSE TITLE	SEM CRED	IAI EQUIV	Dept	Number	Credit	GENERAL EDUCATION			COMMENT
BUS	170	Introduction to Organizational Behavior	3		BUSN	Elective	3				
BUS	200	Legal Environment in Business	3		BUSN	205	3	ETH			
BUS	223	Business Statistics	3		BUSN	265	3	QUA			Only one of BUS 223 or MTH 220 transfer
BUS	230	Entrepreneurship Capstone	3		BUSN	Elective	3				
BUS	279	Principles of Finance	3		FINA	Elective	3				
BUS	282	International Business	3		BUSN	201	3				
CHM	099	Introductory Chemistry	3		No	Credit	0				
CHM	105	Foundations in Chemistry for Non-Science Majors	4	P1 903L	CHEM	100	4	SCI			
CHM	110	General, Organic and Biochemistry I	4	P1 902L	CHEM	Elective	4	SCI			
CHM	120	General Chemistry I	4	P1 902L	CHEM	121	4	SCI			
CHM	130	General Chemistry II	4		CHEM	122	4				
CHM	210	General, Organic and Biochemistry II	4		CHEM	Elective	4				
CHM	220	Organic Chemistry I	5		CHEM	251	5				
CHM	230	Organic Chemistry II	4		CHEM	252	4				
CHM	240	General Biological Chemistry	3		CHEM	Elective	3				
CIS	102	Introduction to Computers & Information Sys	3		No	Credit	3				
CIS	120	Introduction to Microsoft Word	1		No	Credit	0				
CIS	121	Introduction to Excel	1		No	Credit	0				
CIS	124	Introduction to Power Point	1		No	Credit	0				
CIS	170	Programming Logic & Design	3		CSCE	Elective	3				
CIS	180	Introduction to Visual Basic Programming	4		CSCE	Elective	4				
CIS	240	Introduction to JAVA Programming	4		CSCE	160	4				Only one of CIS 240 or CIS 276 transfer
CIS	241	Advanced JAVA Programming	4		CSCE	Elective	4				Only one of CIS 241 or CIS 277 transfer
CIS	245	Programming Android for Mobile Devices	4		CSCE	Elective	4				
CIS	254	Database Programming	4		CSCE	Elective	4				
CIS	276	Introduction to C/C++ Programming	4		CSCE	160	4				Only one of CIS 240 or CIS 276 transfer
CIS	277	Advanced C/C++ Programming	4		CSCE	Elective	4				Only one of CIS 241 or CIS 277 transfer
CIS	279	Visual C# Programming	4		CSCE	Elective	4				Consult CSCE department for placement
CIS	280	Programming iOS Apple Mobile Devices	4		CSCE	Elective	4				
CIS	290	Special Topics in Computer & Information Sys	1-6			Elective					Evaluated individually
CIS	291	Internship Field Project	1-6			Elective					Evaluated individually
COM	113	Introduction to Public Relations	3		COMM	250	3				
COM	119	News Writing	3		MEDI	225	3				
COM	130	Intro to Mass Communication	3		COMM	185	3	SOC	GLO	POW	
COM	140	Writing for Multimedia	3		MEDI	200	3	HUM	POW		
COM	156	Audio Production I	3		MEDI	262	3				
COM	157	Video Production I	3		MEDI	222	3				
COM	208	Screenwriting	3		MEDI	Elective	3				
COM	218	Broadcast Performance	3		MEDI	Elective	3				
COM	221	Photojournalism	3		MEDI	Elective	3				
COM	251	Film History and Appreciation	3	F2 908	FILM	Elective	3	ART			
COM	252	International History of Film	3	F2 909	FILM	Elective	3	ART			
COM	256	Advanced Audio Production	3		MEDI	Elective	3				
COM	257	Advanced Video Production	3		MEDI	322	3				May not use to fulfill 300-level req in major/minor
COM	260	Advanced Post-Production	3		MEDI	Elective	3				
COM	296	Documentary Production	3		No	Credit	0				
COM	298	Mass Communication Internship				Elective					Evaluated individually
CRM	101	Introduction to Criminal Justice	3		SOCI	340	3	GLO			May not use to fulfill 300-level req in major/minor
CRM	102	Introduction to Probation and Parole	3		No	Credit	0				
CRM	103	Introduction to Corrections	3		No	Credit	0				
CRM	104	Introduction to Private Security	3		No	Credit	0				

**COURSE SUBSTITUTIONS FOR STUDENTS TRANSFERRING FROM ROCK VALLEY COLLEGE TO NORTH CENTRAL COLLEGE**

*Based on the 2022-2023 Rock Valley College Catalog and the 2024-2025 North Central College Catalog*

<i>Rock Valley College Courses</i>										<i>NCC Courses</i>			<i>NCC General Education and Comments</i>		
DEPT	NUM	COURSE TITLE	SEM CRED	IAI EQUIV	Dept	Number	Credit	GENERAL EDUCATION			COMMENT				
CRM	105	Police Report Writing	3		No	Credit	0								
CRM	120	Criminal Investigation	3		No	Credit	0								
CRM	125	Criminal Procedure and Civil Rights	3		No	Credit	0								
CRM	127	Ethics in Law Enforcement	3		No	Credit	0								
CRM	210	Criminal Law	3		SOCI	Elective	3								
CRM	225	Juvenile Procedures	3		No	Credit	0								
CRM	260	Police Organization and Administration	3		No	Credit	0								
CRM	271	Patrol Procedures	3		No	Credit	0								
CRM	281	Rules of Evidence	3		No	Credit	0								
CRM	282	Interviews and Interrogations	3		No	Credit	0								
CRM	291	Internship	1-6		No	Credit	0								
DNT		Dental Hygiene			No	Credit	0				No credit transfers from this department				
ECE	100	Intro to Early Childhood Education	3		No	Credit	0								
ECE	101	The Developing Child	3		PSYC	210	3								
ECE	103	Health, Safety, and Nutrition for the Young Child	3		KINE	Elective	3								
ECE	105	Observation and Assessment of Young Children	3		No	Credit	0								
ECE	113	Infant Toddler Curriculum	3		No	Credit	0								
ECE	201	Language Development	3		NCCC	Elective	3								
ECE	202	Child, Family, Community	3		No	Credit	0								
ECE	203	Curriculum Planning for the Young Child	3		EDUC	Elective	3								
ECE	204	Internship - Child Care	4		No	Credit	0								
ECE	205	Organization/Supervision Early Childhood Facilities	3		No	Credit	0								
ECO	101	Introduction to Economics	3	S3 900	ECON	100	3	SOC			Only one of BUS 203 or ECO 101 transfer				
ECO	110	Principles of Economics: Macro	3	S3 901	ECON	205	3	SOC							
ECO	111	Principle of Economics: Micro	3	S3 902	ECON	200	3	SOC							
EDU	202	Children's Literature	3		ENGL	122	3								
EDU	224	Introduction to Education	3		EDUC	101	3								
EDU	234	Introduction to Technology for Teachers	3		EDUC	235	3								
EDU	244	Students with Disabilities in Schools	3		EDUC	330	3				May not use to fulfill 300-level req in major/minor				
EDU	245	Special Education Practicum	1		EDUC	Elective	1								
EDU	274	Elementary School Practicum	1			Elective					Evaluated individually				
EET		Electronic Engineering Tech Courses	1-6		No	Credit	0				No credit transfers from this department				
EGR	101	Introduction to Engineering	2		ENGR	100	2								
EGR	135	Engineering Graphics/CAD	4		ENGR	Elective	4								
EGR	206	Statics	3		PHYS	211	3								
EGR	207	Dynamics	3		PHYS	Elective	3								
EGR	221	Elementary Mechanics of Deformable Bodies	3		PHYS	251	3								
EGR	231	Engineering Circuit Analysis	4		ELEC	250	4								
ELC		Apprenticeship			No	Credit	0				No credit transfers from this department				
ENG		All Courses Numbered Below 100			No	Credit	0								
ENG	101	Composition I	3	C1 900	ENGL	110	3	COMP							
ENG	103	Composition II	3	C1 901R	ENGL	110	3	COMP			or WRI if EGL 101 is complete				
ENG	108	Introductory Creative Writing	3		ENGL	210	3	ART							
ENG	109	Creative Writing II	3		ENGL	Elective	3	ART							
ENG	110	Introduction to Technical Writing	3		ENGL	Elective	3								
ENG	200	Language, Power and Public Life	3	H9 900	ENGL	Elective	3	HUM							
FRE		Fire Science			No	Credit	0				No credit transfers from this department				
FRN	101	Beginning French	4		FREN	101	4								
FRN	102	Continuation of Beginning French	4		FREN	102	4								
FWS	110	Fitness Walking	1		KINE	Activity	1				A maximum 8 hours of KINE activity transfer				
FWS	116	Step Aerobics	1		KINE	Activity	1				A maximum 8 hours of KINE activity transfer				

**COURSE SUBSTITUTIONS FOR STUDENTS TRANSFERRING FROM ROCK VALLEY COLLEGE TO NORTH CENTRAL COLLEGE**

*Based on the 2022-2023 Rock Valley College Catalog and the 2024-2025 North Central College Catalog*

Rock Valley College Courses				NCC Courses			NCC General Education and Comments			
DEPT	NUM	COURSE TITLE	SEM CRED	IAI EQUIV	Dept	Number	Credit	GENERAL EDUCATION		COMMENT
FWS	119	Cardio Kickboxing	1		KINE	Activity	1			A maximum 8 hours of KINE activity transfer
FWS	121	Cardiovascular Fitness & Conditioning	1		KINE	Activity	1			A maximum 8 hours of KINE activity transfer
FWS	126	Beginning Weight Lifting	1		KINE	Activity	1			A maximum 8 hours of KINE activity transfer
FWS	127	Advanced Weight Lifting	2		KINE	Activity	1			A maximum 8 hours of KINE activity transfer
FWS	128	Sports Performance Fitness	1		KINE	Activity	1			A maximum 8 hours of KINE activity transfer
FWS	131	Basketball and Touch Football	1		KINE	Activity	1			A maximum 8 hours of KINE activity transfer
FWS	133	Power Volleyball	1		KINE	105	1			A maximum 8 hours of KINE activity transfer
FWS	141	Hiking, Cycling, and Outdoor Activities	1		KINE	119	1			A maximum 8 hours of KINE activity transfer
FWS	150	Shoto-Kan Karate	1		KINE	Activity	1			A maximum 8 hours of KINE activity transfer
FWS	151	Tae Kwon Do	1		KINE	Activity	1			A maximum 8 hours of KINE activity transfer
FWS	176	Intercollegiate Sports I	1		KINE	Activity	1			A maximum 8 hours of KINE activity transfer
FWS	177	Intercollegiate Sports II	1		KINE	Activity	1			A maximum 8 hours of KINE activity transfer
FWS	220	Intro to Career Opportunities in P.E./Ex Sci/Sport	3		No	Credit	0			
FWS	231	Contemporary Health Issues	3		HTSC	Elective	3			
FWS	233	Community Health	3		HTSC	230	3	POW		
FWS	235	Alcohol and Drug Education	3		HTSC	Elective	3			
FWS	236	Human Sexuality	3		PSYC	Elective	3			
FWS	237	Nutrition for Optimum Living	3		NUTR	Elective	3			
FWS	243	First Aid and General Safety	3		HTSC	100	3	WEL		Only one of FWS 243 or FWS 254 transfer
FWS	250	Introduction to Sport Management	3		SMGT	100	3			
FWS	253	Introduction to Coaching	3		KINE	Elective	3			
FWS	254	ASEP Sport First Aid and CPR	3		HTSC	100	3	WEL		Only one of FWS 243 or FWS 254 transfer
FWS	255	Sociology of Sport	3		SMGT	201	3	SOC	POW	
FWS	256	History of Physical Education and Sport	3		KINE	Elective	3	SOC		
FWS	258	Sport and Exercise Psychology	3		KINE	Elective	3			
FWS	260	Introduction to Exercise Science	3		EXSC	101	3			
FWS	261	Nutrition for Fitness and Sport	3		KINE	Elective	3			
FWS	263	Nutrition, Exercise and Weight Control	3		KINE	Elective	3			
FWS	265	Personal Fitness and Wellness	3		HTSC	Elective	3	WEL		
FWS	266	Personal Training I-Concepts & Applications	3		No	Credit	0			
FWS	267	Personal Training II-Concepts & Applications	3		No	Credit	0			
FWS	270	FWS Practicum I	1-3			Elective				Evaluated individually
FWS	271	FWS Practicum II	1-3			Elective				Evaluated individually
FWS	272	FWS Practicum III	1-3			Elective				Evaluated individually
FWS	275	Personal Training Internship	3		No	Credit	0			
FWS	276	Athletic Coaching Internship	3		No	Credit	0			
GAT	101	Introduction to Graphic Arts Technology	4		INFS	Elective	4			
GAT	110	Introduction to Photoshop	2		No	Credit	0			
GAT	115	Introduction to Illustrator	2		No	Credit	0			
GAT	150	Typography	2		ARTD	242	2			
GAT	178	Fundamentals of Desktop Publishing	3		No	Credit	0			
GAT	190	Image Generation and Output	2		MEDI	Elective	3			
GAT	215	Advanced Illustrator	2		ARTD	Elective	2			
GAT	220	Adv Photoshop for the Graphic Arts Industry	3		INFS	Elective	3			
GAT	241	Intermediate Desktop Publishing	4		MEDI	Elective	4			
GAT	242	Advanced Desktop Publishing	3		MEDI	Elective	3			
GAT	255	Color System Management	3		No	Credit	0			
GEL	101	Introduction to Geology	4	P1 907L	SCIE	Elective	4	SCI		
GEL	107	Geology of the Solar System	3	P1 905	SCIE	Elective	3	SCI		
GEL	206	Environmental Geology	3	P1 908	SCIE	Elective	3	SCI		
GEO	130	World Regional Geography	3	S4 900N	SOCI	Elective	3	SOC		

**COURSE SUBSTITUTIONS FOR STUDENTS TRANSFERRING FROM ROCK VALLEY COLLEGE TO NORTH CENTRAL COLLEGE**

*Based on the 2022-2023 Rock Valley College Catalog and the 2024-2025 North Central College Catalog*

Rock Valley College Courses				NCC Courses			NCC General Education and Comments			
DEPT	NUM	COURSE TITLE	SEM CRED	IAI EQUIV	Dept	Number	Credit	GENERAL EDUCATION		COMMENT
GRM	101	Beginning German	4		GRMN	101	4			
GRM	102	Continuation of Beginning German	4		GRMN	102	4			
HLT	110	Medical Terminology	2		HTSC	156	2			
HST	140	History of Western Civilization I	3	S2 902	HIST	101	3	HUM		
HST	141	History of Western Civilization II	3	S2 903	HIST	102	4	HUM	GLO	
HST	142	History of United States To 1865	3	S2 900	HIST	Elective	3	SOC	GLO	POW
HST	143	History of United States Since 1865	3	S2 901	HIST	Elective	3	SOC	GLO	POW
HST	144	Current History 1945 to the Present	3		HIST	Elective	3	SOC		
HST	151	African History Survey to 1600	3	S2 906N	HIST	Elective	3	SOC		
HST	152	African History Survey Since 1600	3	S2 907N	HIST	185	3	SOC		
HST	162	History of Latin America I	3	S1 910N	HIST	Elective	3	SOC		
HST	163	History of Latin America II	3	S1 911N	HIST	175	3	SOC		
HST	172	History of the Middle East I to 1452	3	S2 918N	HIST	Elective	3	SOC		
HST	173	History of the Middle East II since 1453	3	S2 919N	HIST	180	3	SOC	ETH	GLO
HST	182	History of Eastern Civilization to 1500	3	S2 908N	HIST	165	3	HUM	GLO	
HST	183	History of Eastern Civilization since 1500	3	S2 909N	HIST	Elective	3	SOC		
HST	192	History of the World until 1750	3	S2 912N	HIST	Elective	3	SOC	GLO	
HST	193	History of the World Since 1750	3	S2 913N	HIST	155	3	SOC		
HST	210	History of Women of the United States	3		HIST	242	3	SOC		
HUM	111	Introduction Humanities I	3	HF 902	NCCC	Elective	3	HUM		
HUM	112	Introduction Humanities II	3	HF 903	NCCC	Elective	3	HUM		
HUM	114	Introduction Humanities III	3	HF 901	NCCC	Elective	3	HUM		
HUM	125	Introduction to Non-Western Humanities	3	HF 904N	NCCC	Elective	3	HUM		
HUM	211	War & Western Humanities Through Middle Ages	3	HF 900	NCCC	Elective	3	HUM		
HUM	212	War & Western Humanities Renaissance-Present	3	HF 901	NCCC	Elective	3	HUM		
HUM	250	Leadership Development Studies	3		NCCC	Elective	3			
IDS	299	Independent Study	1-4			Elective				Evaluated individually
LIT	139	Mythology	3	H9 901	CLSS	Elective	3	HUM		
LIT	140	The Bible as Literature	3	H5 901	RELG	110	3	HUM	ETH	
LIT	141	Film and Literature	3	F2 908	FILM	Elective	3	ART		
LIT	142	Exploring Literature	3	H9 903	ENGL	106	3	HUM		
LIT	144	Exploring Literature: Fiction	3	H3 901	ENGL	104	3	HUM		
LIT	201	American Literature before 1865	3	H3 914	ENGL	Elective	3	HUM		
LIT	202	American Literature since 1865	3	H3 915	ENGL	208	3	HUM		
LIT	251	Non-Western Literature Before 1800	3	H3 908N	ENGL	Elective	3	HUM		
MET		Manufacturing Engineering Technology			No	Credit	0			No credit transfers from this department
MGT	170	Business Communications	3		No	Credit	0			
MGT	270	Principles of Management	3		MGMT	305	3			May not use to fulfill 300-level req in major/minor
MGT	271	Human Resource Management	3		MGMT	345	3			May not use to fulfill 300-level req in major/minor
MGT	274	Leadership	3		BUSN	Elective	3			
MGT	283	Internship in Business Management	1-6			Elective	0			Evaluated individually
MKT	260	Principles of Marketing	3		MKTG	300	3			May not use to fulfill 300-level req in major/minor
MKT	265	Salesmanship	3		MKTG	340	3			May not use to fulfill 300-level req in major/minor
MKT	266	Principles of Advertising	3		MKTG	Elective	3			
MKT	288	Customer Relations	3		No	Credit	0			
MTH		All Courses Numbered Below 100			No	Credit	0			
MTH	115	General Education Mathematics	3	M1 904	MATH	120	3	QUA		
MTH	120	College Algebra	3		MATH	Elective	3			Only one of MTH 120 + MTH 125 or MTH 132 transfer
MTH	125	Plane Trigonometry	3		MATH	140	3			Only one of MTH 120 + MTH 125 or MTH 132 transfer
MTH	132	College Algebra and Trigonometry	5		MATH	140	5			Only one of MTH 120 + MTH 125 or MTH 132 transfer
MTH	135	Calculus with Analytic Geometry I	5	M1 900	MATH	151	5	QUA		

**COURSE SUBSTITUTIONS FOR STUDENTS TRANSFERRING FROM ROCK VALLEY COLLEGE TO NORTH CENTRAL COLLEGE**

*Based on the 2022-2023 Rock Valley College Catalog and the 2024-2025 North Central College Catalog*

<i>Rock Valley College Courses</i>											<i>NCC Courses</i>			<i>NCC General Education and Comments</i>			
DEPT	NUM	COURSE TITLE	SEM CRED	IAI EQUIV	Dept	Number	Credit	GENERAL EDUCATION			COMMENT						
MTH	164	The Computer in Mathematics-C/C++	4		MATH	Elective	4										
MTH	211	Calculus for Business and Social Science	4	M1 900B	MATH	Elective	4										
MTH	216	Mathematics for Elementary Teachers I	3		MATH	107	3										
MTH	217	Mathematics for Elementary Teachers II	3	M1 903	MATH	108	3	QUA									
MTH	220	Elements of Statistics	3	M1 902	PSYC	250	3	QUA			Only one of BUS 223 or MTH 220 transfers						
MTH	235	Calculus with Analytic Geometry II	4	M1 9002	MATH	152	4	QUA									
MTH	236	Calculus with Analytic Geometry III	4	M1 9003	MATH	253	4	QUA									
MTH	240	Differential Equations	3		MATH	315	3				May not use to fulfill 300-level req in major/minor						
MUS	101	Fundamentals of Music	3		MUSI	Elective	3										
MUS	102	Introduction to Music Literature	3	F1 901	MUSI	150	3	ART									
MUS	104	Introduction to American Music	3	F1 904	MUSI	Elective	3	ART									
MUS	106	Introduction to Non-Western Music	3	F1 903N	MUSI	156	3	ART	GLO								
MUS	122	Applied Jazz Guitar for Non Majors	1		MUAL	185	1										
MUS	123	Applied Piano for Non Majors	1		MUAL	110	1										
MUS	124	Applied Voice for Non Majors	1		MUAL	100	1										
MUS	125	Applied Strings for Non Majors	1		MUAL	189	1										
MUS	126	Applied Brass for Non Majors	1		MUAL	183	1										
MUS	127	Applied Woodwinds for Non Majors	1		MUAL	129	1										
MUS	128	Applied Percussion for Non Majors	1		MUAL	160	1										
MUS	129	Applied Classical Guitar for Non Majors	1		MUAL	185	1										
MUS	130	Applied Music for Non Majors	1		MUSI	Elective	1										
MUS	131	Class Piano I	2		MUAL	110	2										
MUS	132	Class Piano II	2		MUAL	110	2										
MUS	191	Chorus I	1		MUEN	100	1										
MUS	194	Instrumental Ensemble I (Jazz Ensemble)	1		MUEN	121	1										
MUS	195	Band I	1		MUEN	113	1										
MUS	198	Orchestra I	1		MUEN	114	1										
MUS	222	Applied Jazz Guitar for Music Majors	2		MUAL	185	2										
MUS	223	Applied Piano for Music Majors	2		MUAL	110	2										
MUS	224	Applied Voice for Music Majors	2		MUAL	100	2										
MUS	225	Applied Strings for Music Majors	2		MUAL	189	2										
MUS	226	Applied Brass for Music Majors	2		MUAL	183	2										
MUS	227	Applied Woodwinds for Music Majors	2		MUAL	129	2										
MUS	228	Applied Percussion for Music Majors	2		MUAL	160	2										
MUS	229	Applied Classical Guitar for Music Majors	2		MUAL	185	2										
MUS	230	Applied Music for Music Majors	2		MUSI	Elective	2										
MUS	294	Instrumental Ensemble II (Jazz Ensemble)	1		MUAL	Elective	1										
MUS	295	Band II	1		MUEN	114	1										
MUS	298	Orchestra II	1		MUEN	Elective	2										
NAD		Nursing Aide			No	Credit	0				No credit transfers from this department						
NRS		Nursing			No	Credit	0				No credit transfers from this department						
OFF		Office Professional			No	Credit	0				No credit transfers from this department						
PCI		Personal Computer Information Specialist			No	Credit	0				No credit transfers from this department						
PCT		Personal Computer Technical Specialist			No	Credit	0				No credit transfers from this department						
PGE	100	Physical Geography	3	P1 909	SCIE	Elective	3	SCI			Only one of PGE 100 or PGE 102 transfer						
PGE	102	Physical Geography with Lab	4	P1 909L	SCIE	Elective	4	SCI			Only one of PGE 100 or PGE 102 transfer						
PGE	240	Global Climate Change	3	P1 905	ENVI	105	3	SCI									
PHL	150	Introduction to Philosophy	3	H4 900	PHIL	100	3	HUM	ETH								
PHL	152	Environmental Ethics	3		PHIL	225	3	HUM	ETH								
PHL	153	Medical Ethics	3		PHIL	213	3	HUM	ETH								
PHL	154	Introduction to Religion	3	H5 900	RELG	100	3	HUM	GLO								



**COURSE SUBSTITUTIONS FOR STUDENTS TRANSFERRING FROM ROCK VALLEY COLLEGE TO NORTH CENTRAL COLLEGE**

*Based on the 2022-2023 Rock Valley College Catalog and the 2024-2025 North Central College Catalog*

Rock Valley College Courses											NCC Courses			NCC General Education and Comments			
DEPT	NUM	COURSE TITLE	SEM CRED	IAI EQUIV	Dept	Number	Credit	GENERAL EDUCATION			COMMENT						
PHL	155	World Religions	3	H5 904N	RELG	100	3	HUM	GLO								
PHL	156	Religion in American Society	3	H5 905	RELG	240	3	HUM	ETH	GLO							
PHL	157	Foundational Religious Texts	3	H5 901	RELG	110	3	HUM	ETH								
PHL	255	Logic	3	H4 906	PHIL	230	3	QUA									
PHL	256	Contemporary Moral Issues	3	H4 904	PHIL	Elective	3	HUM	ETH								
PHL	260	Philosophy of Religion	3	H4 905	PHIL	360	3	HUM	ETH		May not use to fulfill 300-level req in major/minor						
PHY	201	Mechanics and Heat	5	P1 900L	PHYS	131	4	SCI									
PHY	202	Waves, Electricity, Light and Modern Physics	5		PHYS	132	4	SCI									
PHY	215	Mechanics, Wave Motion & Thermodynamics	5	P2 900L	PHYS	161	4	SCI									
PHY	225	Electricity, Magnetism, Light & Modern Physics	5		PHYS	162	4	SCI									
PLB		Phlebotomy Technician			No	Credit	0				No credit transfers from this department						
PSC	150	Introduction to Political Science	3	S5 903	POLS	Elective	3	SOC									
PSC	160	American National Government	3	S5 900	POLS	101	3	SOC	POW								
PSC	161	State and Local Government	3	S5 902	POLS	Elective	3	SOC									
PSC	211	The American Presidency	3		POLS	211	3	SOC									
PSC	269	International Relations	3	S5 904N	POLS	102	3	SOC	GLO								
PSY	170	General Psychology	3	S6 900	PSYC	100	3	SOC									
PSY	225	Child Development	3	S6 903	PSYC	210	3	SOC									
PSY	250	Psychology of Personality	3		PSYC	320	3				May not use to fulfill 300-level req in major/minor						
PSY	270	Lifespan Developmental Psychology	3	S6 902	PSYC	235	3	SOC									
PSY	271	Educational Psychology	3		PSYC	205	3										
PSY	275	Social Psychology	3	S8 900	PSYC	240	3	SOC									
PSY	276	Abnormal Psychology	3		PSYC	324	3				May not use to fulfill 300-level req in major/minor						
RDG		Reading			No	Credit	0				No credit transfers from this department						
RSP		Respiratory Care			No	Credit	0				No credit transfers from this department						
SOC	190	Introduction to Sociology	3	S7 900	SOCI	100	3	SOC	POW								
SOC	290	Social Problems	3	S7 901	SOCI	Elective	3	SOC									
SOC	291	Criminology	3		CRIM	100	3										
SOC	292	Sociology of Deviance	3		SOCI	Elective	3	SOC									
SOC	294	Urban Sociology	3		SOCI	223	3	SOC	POW								
SOC	295	Racial and Ethnic Relations	3	S7 903D	SOCI	211	3	SOC	POW								
SOC	298	Sociology of Sex and Gender	3	S7 904D	GSST	100	3	SOC	POW								
SOC	299	Marriage and the Family	3	S7 902	SOCI	220	3	SOC	GLO								
SPH	131	Fundamentals of Communication	3	C2 900	COMM	100	3										
SPH	201	Interpersonal Communication	3		COMM	200	3	SOC									
SPH	202	Intercultural Communication	3		COMM	317	3	SOC	GLO		May not use to fulfill 300-level req in major/minor						
SPH	211	Group Leadership	3		COMM	214	3	SOC									
SPN	101	Beginning Spanish	4		SPAN	101	4										
SPN	102	Continuation of Beginning Spanish	4		SPAN	102	4										
SPN	203	Intermediate Spanish	3		SPAN	201	3										
SPN	204	Continuation of Intermediate Spanish	3	H1 900	SPAN	202	3	HUM									
SRG		Surgical Technology			No	Credit	0				No credit transfers from this department						
STU		Student Development			No	Credit	0				No credit transfers from this department						
THE	133	Introduction to Theatre	3	F1 907	THEA	175	3	ART									
THE	134	Stagecraft and Theatre Lighting	3		THEA	141	3										
THE	135	Acting I	3		THEA	101	3	ART									
THE	235	Acting II	3		THEA	250	3										
WEB	101	Programming Related to Internet	4		INFS	Elective	4										
WEB	102	Advanced Programming Related to the Internet	4		ARTD	245	4										
WEB	111	Introduction to Multimedia	3		No	Credit	0										
WEB	225	Digital Photography	3		ARTD	275	3										

**COURSE SUBSTITUTIONS FOR STUDENTS TRANSFERRING FROM ROCK VALLEY COLLEGE TO NORTH CENTRAL COLLEGE**

*Based on the 2022-2023 Rock Valley College Catalog and the 2024-2025 North Central College Catalog*

<i>Rock Valley College Courses</i>					<i>NCC Courses</i>			<i>NCC General Education and Comments</i>			
DEPT	NUM	COURSE TITLE	SEM CRED	IAI EQUIV	Dept	Number	Credit	GENERAL EDUCATION			COMMENT
WEB	233	Introduction to JavaScript	4		INFS	Elective	4				
WEB	234	PHP Programming	4		INFS	Elective	4				
WEB	290	Special Topics in Web Information Technology	1-6			Elective					Evaluated individually
WEB	291	Internship/Field Experience	1-6		No	Credit	0				
WLD		Welding Technology			No	Credit	0				No credit transfers from this department