

HEY FUTURE CARDINAL!

Welcome to

**NORTH CENTRAL
COLLEGE**



**NORTH CENTRAL
COLLEGE 1861**



EVENT RESOURCES & SURVEY

OCTOBER 11 VISIT DAY AGENDA
WENTZ CONCERT HALL

- 10:00 A.M. CHECK-IN BEGINS*
UPDATE: Attend Beyond the Classroom presentation at 10:10 am in Wentz Concert Hall to learn about our Honors Program, Education Abroad programs, internships, and more exciting academic opportunities.
- 10:30 A.M. WELCOME PRESENTATION
- 11:00 A.M. PANEL OF PROFESSORS
- 11:30 A.M. WALKING CAMPUS TOUR*
- 12:30 P.M. YOU PICK!*
- 1:30 - 2:30 P.M. SHIMMER OPEN HOUSE
- 1:30 - 4:30 P.M. FINE ARTS AUDITIONS

***SCAVENGER HUNT**

Complete 4 scavenger hunt items and show Admission staff at the check-in counter before you leave to pick up more North Central swag!

- BEYOND THE CLASSROOM PRESENTATION
- TAKE A PHOTO WITH CHIPPY THE CARDINAL, OUR MASCOT
- TAKE A PHOTO ON TOUR
- LUNCH AT KAUFMAN DINING HALL
- STUDENT LIFE FAIR
- TAKE SELFIE AT OUR PHOTO BACKDROP
- INTRODUCE YOURSELF TO AN ADMISSION COUNSELOR
- TAKE EVENT SURVEY

12:30-1:30 P.M. YOU PICK!

- A. KAUFMAN DINING HALL**
221 S. Brainerd St.
Pick up your complimentary meal pass from the check-in counter after the campus tour!
- B. CAMPUS STORE**
100 E. Jefferson Ave.
Shop at the Campus Store and enjoy 20% off your purchase! Just show them your name tag!
- C. STUDENT LIFE FAIR***
Wentz Concert Hall Lobby
- D. DOWNTOWN MAPERVILLE**
Explore over 150 restaurants and shops in beautiful downtown Naperville within walking distance from campus.
- E. TROLLEY TOUR**
Wentz Concert Hall Main Entrance
Take a tour of the surrounding downtown Naperville area. Trolley departs from main entrance every 15 minutes. Highly recommended if this is your first time visiting Naperville!

Map Labels: YOU PICK! (A, B, C, D, E), WENTZ CONCERT HALL, KAUFMAN DINING HALL, CAMPUS STORE, STUDENT LIFE FAIR, DOWNTOWN MAPERVILLE, TROLLEY TOUR.



Access event presentations and more

Complete our scavenger hunt to pick up more North Central swag before you leave!



More than

2,900

STUDENTS

CALL NORTH CENTRAL HOME

FREE COLLEGE*

DEBT-FREE. STRESS-FREE. TUITION-FREE.



NORTH CENTRAL COLLEGE

**CARDINAL
PLEDGE**

The Cardinal Pledge program covers **100% of tuition** and fees for qualified first-year students from Illinois, with the goal of expanding access to a North Central education and taking the guesswork out of the financial aid process.

It's #NotTooGoodToBeTrue!



**FIND OUT IF
YOU QUALIFY**



IT'S NOT TOO GOOD TO BE TRUE!

- 35% of new students will qualify**
- Applying is easy**
- Open to both resident and commuter students**



**FIND OUT IF
YOU QUALIFY**





36% of Cardinals are
**FIRST-GENERATION
COLLEGE STUDENTS**

**Naperville Park District
is one of the largest in
Illinois with _____ parks.**

- (A) 40**
- (B) 212**
- (C) 93**
- (D) 138**



Naperville Park District
is one of the largest in
Illinois with _____ parks.

- (A) 40
- (B) 212
- (C) 93
- (D) **138**



WE INVITE YOU!

**PLEASE SIT IN THE ROW THAT MATCHES THE
COLOR OF YOUR NAMETAG**

GREEN

RED

BLUE

YELLOW



SEE SIGNS ON ROWS

Campus is located
**STEPS FROM
DOWNTOWN NAPERVILLE:**

Home to 150+ restaurants and shops

Easy access to the Naperville Riverwalk

Named among “Safest College Towns”
and “Best Cities to Live in America”



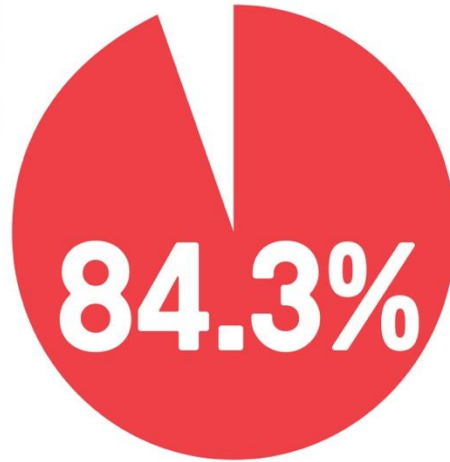
ASK US ABOUT

AVAILABLE SCHOLARSHIPS

- Academic Merit
- Fine & Performing Arts
- Department/Major Specific
- United Methodist and Religious Vocations
- Future Engineers and Teachers
- Alumni Referral

ACADEMIC MERIT SCHOLARSHIP
Starts at **\$25,500** annually

ALUMNI REFERRAL SCHOLARSHIP
\$1,000 annually



of graduates
are either



EMPLOYED or **ATTENDING**
GRADUATE SCHOOL

within 6 months of graduation

EVENT RESOURCES & SURVEY

OCTOBER 11 VISIT DAY AGENDA
WENTZ CONCERT HALL

- 10:00 A.M. CHECK-IN BEGINS*
UPDATE: Attend Beyond the Classroom presentation at 10:10 am in Wentz Concert Hall to learn about our Honors Program, Education Abroad programs, internships, and more exciting academic opportunities.
- 10:30 A.M. WELCOME PRESENTATION
- 11:00 A.M. PANEL OF PROFESSORS
- 11:30 A.M. WALKING CAMPUS TOUR*
- 12:30 P.M. YOU PICK!*
- 1:30 - 2:30 P.M. SHIMER OPEN HOUSE
- 1:30 - 4:30 P.M. FINE ARTS AUDITIONS

***SCAVENGER HUNT**

Complete 4 scavenger hunt items and show Admission staff at the check-in counter before you leave to pick up more North Central swag!

- BEYOND THE CLASSROOM PRESENTATION
- TAKE A PHOTO WITH CHIPPY THE CARDINAL, OUR MASCOT
- TAKE A PHOTO ON TOUR
- LUNCH AT KAUFMAN DINING HALL
- STUDENT LIFE FAIR
- TAKE SELFIE AT OUR PHOTO BACKDROP
- INTRODUCE YOURSELF TO AN ADMISSION COUNSELOR
- TAKE EVENT SURVEY

12:30-1:30 P.M. YOU PICK!

- A. KAUFMAN DINING HALL**
221 S. Brainerd St.
Pick up your complimentary meal pass from the check-in counter after the campus tour!
- B. CAMPUS STORE**
100 E. Jefferson Ave.
Shop at the Campus Store and enjoy 20% off your purchase! Just show them your name tag!
- C. STUDENT LIFE FAIR***
Wentz Concert Hall Lobby
- D. DOWNTOWN MAPERVILLE**
Explore over 150 restaurants and shops in beautiful downtown Naperville within walking distance from campus.
- E. TROLLEY TOUR**
Wentz Concert Hall Main Entrance
Take a tour of the surrounding downtown Naperville area. Trolley departs from main entrance every 15 minutes. Highly recommended if this is your first time visiting Naperville!

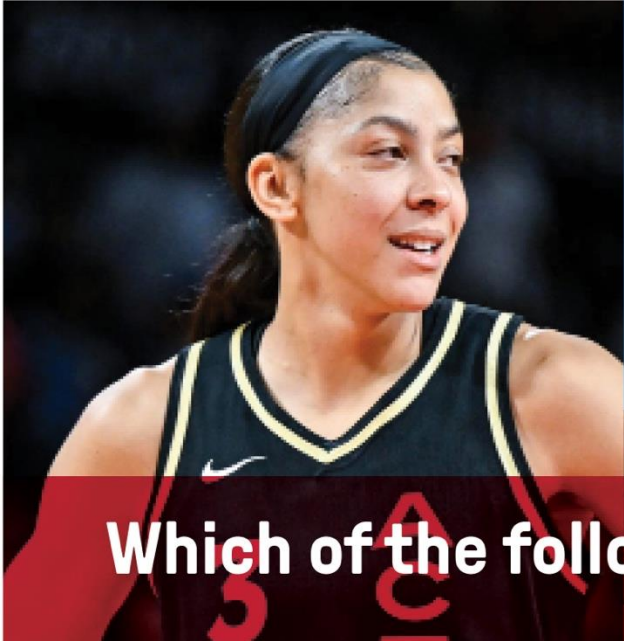
Map Labels: YOU ARE HERE, A, B, C, D, E



Access event presentations and more

Complete our scavenger hunt to pick up more North Central swag before you leave!





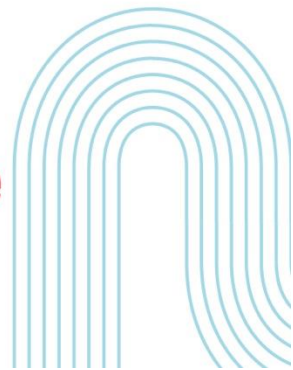
Which of the following celebrities are from Naperville?

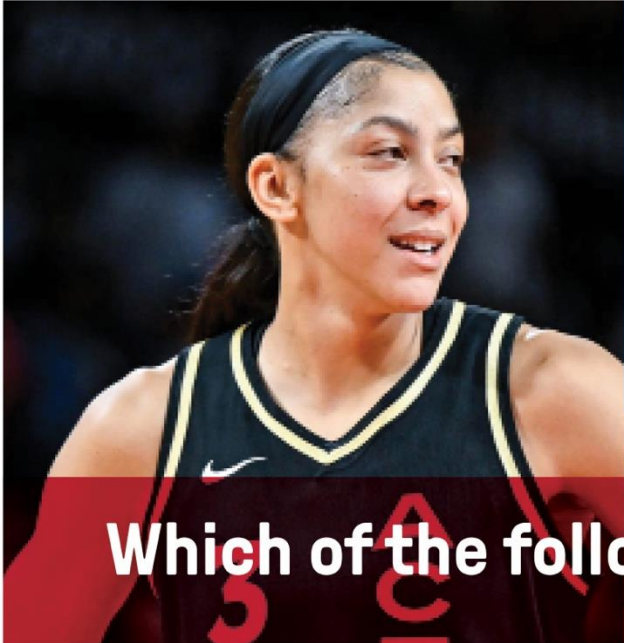
A Candace Parker
(former WNBA player)

C Emily Giffin
(author)

B Bob Odenkirk
(former SNL and Breaking
Bad actor)

D All of the above





Which of the following celebrities are from Naperville?

A Candace Parker
(former WNBA player)

C Emily Giffin
(author)

B Bob Odenkirk
(former SNL and Breaking
Bad actor)

D All of the above



WE INVITE YOU!

**PLEASE SIT IN THE ROW THE MATCHES YOUR
ACADEMIC INTEREST BEST**



SEE SIGNS ON ROWS



STEM & HEALTH SCIENCES

(Occupational Therapy, Neuroscience, Environmental Studies, etc.)



ARTS, HUMANITIES, AND SOCIAL SCIENCES

(Shimer Great Books, Psychology, World Languages, etc.)



EDUCATION

(Elementary, Secondary, Special, etc.)



BUSINESS

(Management, Marketing, Accounting, etc.)



NEW MAJOR SPOTLIGHT
CRIMINOLOGY



**In the classroom,
you will:**

- Explore the causes of criminal behavior
- Examine the evolution and impact of our justice system
- Assess the structures and functions of discipline

**Beyond the classroom, you
can pursue careers in:**

- Social Services
- Courts
- Policing
- Institutional and Community Corrections
- Juvenile Justice
- Intelligence
- Legislative and Law Offices



NEW MAJOR SPOTLIGHT

NUTRITION SCIENCE



In the classroom, you will:

- Practice nutrition counseling
- Develop health promotion campaigns
- Explore sustainable food/gardening practices

Beyond the classroom, you can pursue careers in:

- Registered Dietitian Nutritionist (RDN)
- Nutrition and Dietitian Technician, Registered (NDTR)
- Food Service Management
- Wellness and Health Promotion



NEW MAJOR SPOTLIGHT
SPECIAL EDUCATION



In the classroom, you will:

- Examine the history of disability and Special Education
- Review the legal requirements related to the protocols and provisions implemented through the IEP
- Apply practices to remove learning and societal barriers that diverse populations of exceptional learners face
- Improve learner-centered outcomes

Beyond the classroom, you gain field experience in:

- Elementary School
- Middle/High School
- Transition Services

FREE COLLEGE*

DEBT-FREE. STRESS-FREE. TUITION-FREE.



NORTH CENTRAL COLLEGE

**CARDINAL
PLEDGE**

The Cardinal Pledge program covers **100% of tuition** and fees for qualified first-year students from Illinois, with the goal of expanding access to a North Central education and taking the guesswork out of the financial aid process.

It's #NotTooGoodToBeTrue!



**FIND OUT IF
YOU QUALIFY**



IT'S NOT TOO GOOD TO BE TRUE!

- 35% of new students will qualify**
- Applying is easy**
- Open to both resident and commuter students**



**FIND OUT IF
YOU QUALIFY**



SHIMER GREAT BOOKS SCHOOL

Great books *BUILDING*

GREAT MINDS.

Program Focuses:

- Humanities
- Liberal Studies
- Natural Sciences
- Social Sciences



THE NAPERVILLE PUBLIC
LIBRARY HAS RANKED #1 IN THE
U.S. FOR THE PAST 10 YEARS.

TRUE *OR*
FALSE



**THE NAPERVILLE PUBLIC
LIBRARY HAS RANKED #1 IN THE
U.S. FOR THE PAST 10 YEARS.**

TRUE



**North Central College students
can get a free library card!**



WE INVITE YOU!

**PLEASE SIT IN THE ROW THE MATCHES YOUR
ACADEMIC INTEREST BEST**



SEE SIGNS ON ROWS



STEM & HEALTH SCIENCES

(Occupational Therapy, Neuroscience, Environmental Studies, etc.)



ARTS, HUMANITIES, AND SOCIAL SCIENCES

(Shimer Great Books, Psychology, World Languages, etc.)



EDUCATION

(Elementary, Secondary, Special, etc.)



BUSINESS

(Management, Marketing, Accounting, etc.)

UNDERGRADUATE TO GRADUATE Pathway Programs

Pathways and support
for every stage of
your career.

*Undergraduate programs with pathways to graduate degrees.
Space is limited, competitive and requires a separate application
into graduate program.*

Athletic Training
(BS to MAT)

Occupational Therapy
(BS to MOT)

Physical Therapy
(BS to DPT)

Physician Assistant Studies
(BS to MPAS)

GRADUATE PROGRAMS

Grow your earning potential and expand your professional network.

MASTER'S DEGREES

Athletic Training

Business Administration

Educational Leadership

Higher Education Leadership

Human Resource Management

Instructional Coaching

Liberal Studies

Occupational Therapy

Organizational Leadership

Physician Assistant Studies*

Professional and Creative Writing

Sports Leadership

DOCTORAL DEGREES

Physical Therapy**

*The ARC-PA has granted Accreditation-Provisional status to the North Central College Master of Physician Assistant Studies Program sponsored by North Central College. Accreditation-Provisional is an accreditation status granted when the plans and resource allocation, if fully implemented as planned, of a proposed program that has not yet enrolled students appear to demonstrate the program's ability to meet the ARC-PA Standards or when a program holding Accreditation-Provisional status appears to demonstrate continued progress in complying with the Standards as it prepares for the graduation of the first class (cohort) of students. Accreditation-Provisional does not ensure any subsequent accreditation status. It is limited to no more than five years from matriculation of the first class. The program's accreditation history can be viewed on the ARC-PA website at arc-pa.org/accreditation-history-north-central-college/. North Central College matriculated its first class in January, 2022.

**Graduation from a physical therapist education program accredited by the Commission on Accreditation in Physical Therapy Education (CAPTE), 3030 Potomac Ave., Suite 100, Alexandria, Virginia 22305-3085; phone: 703-706-3245; accreditation@apta.org is necessary for eligibility to sit for the licensure examination, which is required in all states. North Central College is seeking accreditation of a new physical therapist education program from CAPTE. On June 1, 2022, the program submitted an Application for Candidacy, which is the formal application required in the pre-accreditation stage. Submission of this document does not assure that the program will be granted Candidate for Accreditation status. Achievement of Candidate for Accreditation status is required prior to implementation of the professional phase of the program; therefore, no students may be enrolled in professional courses until Candidate for Accreditation status has been achieved. Further, though achievement of Candidate for Accreditation status signifies satisfactory progress towards accreditation, it does not assure that the program will be granted accreditation.

EVENT RESOURCES & SURVEY

OCTOBER 11 VISIT DAY AGENDA
WENTZ CONCERT HALL

- 10:00 A.M. CHECK-IN BEGINS*
UPDATE: Attend Beyond the Classroom presentation at 10:10 am in Wentz Concert Hall to learn about our Honors Program, Education Abroad programs, internships, and more exciting academic opportunities.
- 10:30 A.M. WELCOME PRESENTATION
- 11:00 A.M. PANEL OF PROFESSORS
- 11:30 A.M. WALKING CAMPUS TOUR*
- 12:30 P.M. YOU PICK!*
- 1:30 - 2:30 P.M. SHIMER OPEN HOUSE
- 1:30 - 4:30 P.M. FINE ARTS AUDITIONS

***SCAVENGER HUNT**

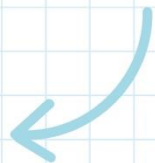
Complete 4 scavenger hunt items and show Admission staff at the check-in counter before you leave to pick up more North Central swag!

- BEYOND THE CLASSROOM PRESENTATION
- TAKE A PHOTO WITH CHIPPY THE CARDINAL, OUR MASCOT
- TAKE A PHOTO ON TOUR
- LUNCH AT KAUFMAN DINING HALL
- STUDENT LIFE FAIR
- TAKE SELFIE AT OUR PHOTO BACKDROP
- INTRODUCE YOURSELF TO AN ADMISSION COUNSELOR
- TAKE EVENT SURVEY

12:30-1:30 P.M. YOU PICK!

- A. KAUFMAN DINING HALL**
221 S. Brainerd St.
Pick up your complimentary meal pass from the check-in counter after the campus tour!
- B. CAMPUS STORE**
100 E. Jefferson Ave.
Shop at the Campus Store and enjoy 20% off your purchase! Just show them your name tag!
- C. STUDENT LIFE FAIR***
Wentz Concert Hall Lobby
- D. DOWNTOWN MAPERVILLE**
Explore over 150 restaurants and shops in beautiful downtown Naperville within walking distance from campus.
- E. TROLLEY TOUR**
Wentz Concert Hall Main Entrance
Take a tour of the surrounding downtown Naperville area. Trolley departs from main entrance every 15 minutes. Highly recommended if this is your first time visiting Naperville!

Map Labels: YOU ARE HERE, D, C, A, B, E



Access event presentations and more

Complete our scavenger hunt to pick up more North Central swag before you leave!



NAPERVILLE IS RANKED _____ OF SMALL CITIES IN THE U.S. FOR STARTING A CAREER AFTER COLLEGE.

- A 7**
- B 15**
- C 9**
- D 18**



**NAPERVILLE IS RANKED NUMBER _____ OF
SMALL CITIES IN THE U.S. FOR STARTING A
CAREER AFTER COLLEGE.**

- A 7**
- B 15
- C 9
- D 18



*CoworkingCafe 2024

WE INVITE YOU!

**PLEASE SIT IN THE ROW THE MATCHES YOUR
ACADEMIC INTEREST BEST**



SEE SIGNS ON ROWS



STEM & HEALTH SCIENCES

(Occupational Therapy, Neuroscience, Environmental Studies, etc.)



ARTS, HUMANITIES, AND SOCIAL SCIENCES

(Shimer Great Books, Psychology, World Languages, etc.)



EDUCATION

(Elementary, Secondary, Special, etc.)



BUSINESS

(Management, Marketing, Accounting, etc.)

ROADMAP TO

BECOMING A CARDINAL



- VISIT CAMPUS** (*AND VISIT AGAIN!*)
- APPLY FOR ADMISSION**
- FILE THE FAFSA & REVIEW AWARD OFFER**
- MAKE IT OFFICIAL WITH YOUR DEPOSIT**
- ATTEND ORIENTATION & REGISTER FOR CLASSES**
- FIRST DAY OF CLASSES**

FREE COLLEGE*

DEBT-FREE. STRESS-FREE. TUITION-FREE.



NORTH CENTRAL COLLEGE

**CARDINAL
PLEDGE**

The Cardinal Pledge program covers **100% of tuition** and fees for qualified first-year students from Illinois, with the goal of expanding access to a North Central education and taking the guesswork out of the financial aid process.

It's #NotTooGoodToBeTrue!



**FIND OUT IF
YOU QUALIFY**



IT'S NOT TOO GOOD TO BE TRUE!

- 35% of new students will qualify**
- Applying is easy**
- Open to both resident and commuter students**



**FIND OUT IF
YOU QUALIFY**





SHOP OUR CAMPUS STORE



To Claim Your 10% Discount:



Bring your name tag during store hours and shop!

OR



Shop the online campus store with code **WELCOMEBACK!**