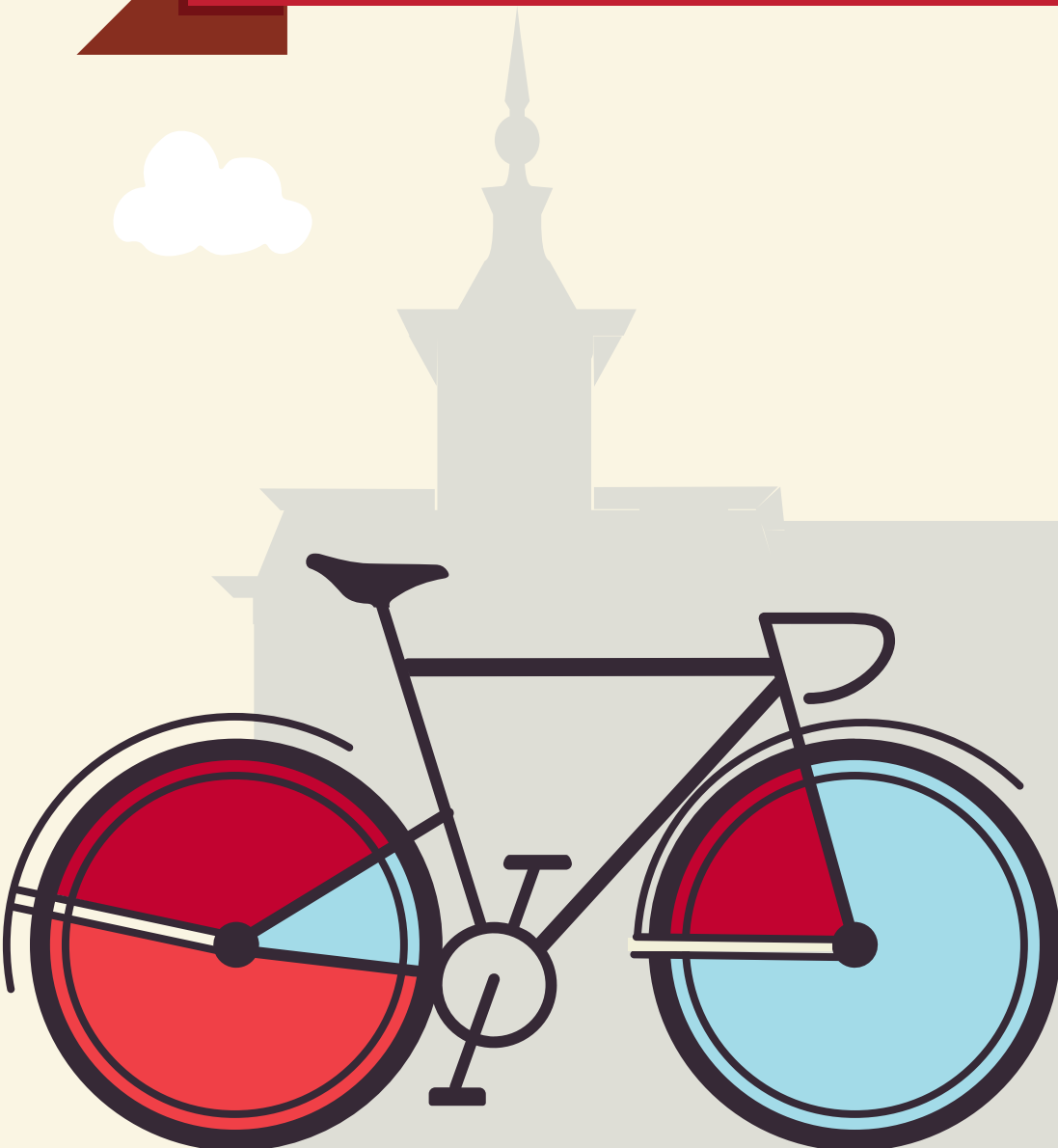


YOUR GUIDE TO TRANSFERRING TO NORTH CENTRAL COLLEGE

OAKTON COLLEGE





This guide is based on the 2024-2025 Oakton College catalog, and the 2024-2025 North Central College catalog. North Central College reserves the right to alter any information listed in this guide, including the transferability of courses, without notice or obligation. For assistance with this guide, please call the Office of Admission at (630) 637-5800 or email at admissions@noctrl.edu.

How to use this guide: This course substitution guide is designed to help you select courses at Oakton College if you plan to transfer to North Central College. Working with your OC advisor and NCC transfer admission counselor, refer to this guide to determine courses that meet North Central College requirements in our general education curriculum, academic major and minor requirements, and electives. Your NCC counselor can also provide a major planning worksheet. Listed below is a sample from this guide:

OC Course Numbers, Titles, Credit					NCC Equivalent Course Numbers & Credit			NCC General Education Codes			Important Information about courses
DEPT	NUM	COURSE TITLE	CREDIT	IAI EQUIV	DEPT	NUM	CREDIT	GENERAL EDUCATION			COMMENTS
HIS	204	History of South Asia II	3	S2 917N	HIST	Elective	3	SOC			
HIS	206	History of the Ancient World: Greece	3		HIST	Elective	3	SOC			HIS 206 + HIS 207 = HIST 255

The Cardinal Directions general education curriculum at North Central College is as follows, along with the general education codes you will find in this guide. Please note the column to the far right which indicates which of these requirements may be waived (or required) based on the level of education you achieve prior to transferring. For additional details, please reference the NC catalog: <http://catalog.noctrl.edu/content.php?catoid=26&navoid=2582>.

CARDINAL DIRECTIONS CURRICULUM MAP

Requirement	General Education Code	Credit	Comments
Composition	COMP	4 credits	Met with A.A. or A.S. degree
Writing Intensive	WRI	4 credits	Met with A.A. or A.S. degree
Public Speaking	COM	4 credits	Met with A.A. or A.S. degree
Arts	ART	4 credits	Met with A.A. or A.S. degree
Humanities	HUM	4 credits	Met with A.A. or A.S. degree
Social Science	SOC	4 credits	Met with A.A. or A.S. degree
Science	SCI	4 credits	Met with A.A. or A.S. degree
Quantitative Analysis	QUA	4 credits	Met with A.A. or A.S. degree
Power Structures or Global Understanding	POW or GLO	4 credits	Met with A.A. or A.S. degree GLO may be met with Study Abroad at NCC
Ethical Dimensions	ETH	4 credits	Met with A.A. or A.S. degree
Well Being	WEL	2 credits	Met with A.A. or A.S. degree
Experiential (One of the following):	-Community Engaged Learning -Study Away/Study Abroad -Student Research -CARD 400 – Senior Seminar: Liberal Arts and Problems of Today	2 credits	Met with A.A. or A.S. degree
Career Readiness: Preparation and Experiential*	CARD 250 – Career Preparation CARD 300 – Career Experiential	4 credits total	*Must be taken at NC

- *An equivalent 3-credit transfer course may be used to fulfill a General Education requirement.
- One course may fulfill multiple requirements.
- College Transfer Credits are courses taken at a college or university after graduating high school and not earned through AP, IB, or CLEP.
- Only 64 semester hours (96 quarter hours) may transfer from a 2-yr college. Developmental courses (under 100-level) do not transfer.
- Requirements met through an eligible A.A. or A.S. degree may also be met with an eligible A.A.S. degree only if applied to the B.A.S. degree.
- Students with less than 28 transferable hours will need to complete CARD 110, a 1-credit transition course.

COURSE SUBSTITUTIONS FOR STUDENTS TRANSFERRING FROM OAKTON COLLEGE to NORTH CENTRAL COLLEGE

Based on the 2024-2025 Oakton College Catalog and the 2024-2025 North Central College Catalog

Oakton College Courses					NCC Courses			NCC General Education and Comments			
DEPT	NUM	COURSE TITLE	SEM CRED	IAI EQUIV	Dept	Number	Credit	GENERAL EDUCATION		COMMENT	
ACC	100	Accounting Procedures	3		No	Credit	0				
ACC	153	Principles of Financial Accounting	4		ACCT	201	4				
ACC	154	Principles of Managerial Accounting	4		ACCT	202	4				
ACC	170	Payroll Tax Accounting	1		No	Credit	0				
ACC	175	Accounting with Sage 50 - Part I	1		No	Credit	0				
ACC	176	Accounting with Sage 50 - Part II	1		No	Credit	0				
ACC	180	Accounting with Microsoft Excel	3		No	Credit	0				
ACC	183	QuickBooks Certified User Preparation	3		No	Credit	0				
ACC	188	Cloud Accounting	3		No	Credit					
ACC	241	Intermediate Accounting I	4		ACCT	317	4			May not use to fulfill 300-level req in major/minor	
ACC	242	Intermediate Accounting II	4		ACCT	318	4			May not use to fulfill 300-level req in major/minor	
ACC	243	Accounting Research	2		ACCT	Elective	2				
ACC	244	Income Tax Accounting	3		ACCT	330	3			May not use to fulfill 300-level req in major/minor	
ACC	245	Cost Accounting	3		ACCT	307	3			May not use to fulfill 300-level req in major/minor	
ACC	250	Accounting Systems and Procedures	3		No	Credit	0				
ACC	251	QuickBooks Comprehensive	3		No	Credit	0				
ACC	253	Practicum	3			Elective	0			Evaluated individually	
ACC	255	Careers in Accounting	2		No	Credit	0				
ACC	260	Auditing	3		ACCT	Elective	0				
ACC	266	Advanced Accounting	3		ACCT	Elective	3				
ACC	274	Advanced Tax Accounting	3		ACCT	Elective	3				
ACC	275	IRS Enrolled Agent Exam Preparation	4		No	Credit	0				
ACC	290	Topics In Accounting	1-4			Elective				Evaluated individually	
AHR		Air Conditioning, Heating, & Refrig Tech			No	Credit	0			No credit transfers from this department	
ANT	102	Introduction to Social and Cultural Anthropology	3	S1 901N	ANTH	145	3	SOC	GLO		
ANT	103	Introduction to Archaeology	3	S1 903	ANTH	Elective	3	SOC			
ANT	104	Introduction to Physical Anthropology	3	S1 902	ANTH	Elective	3	SOC	SCI		
ANT	290	Topics in Anthropology	1-4			Elective				Evaluated individually	
ARB	101	Beginning Arabic I	4		ARAB	101	4				
ARB	102	Beginning Arabic II	4		ARAB	102	4				
ARB	105	Conversational Arabic	3		ARAB	Elective	3				
ARB	201	Intermediate Arabic I	4		ARAB	201	4				
ARB	202	Intermediate Arabic II	4	H1 900	ARAB	202	4	HUM			
ART	105	Fundamentals of Two-Dimensional Art I	3		ARTD	107	3				
ART	107	Fundamentals of Three-Dimensional Art I	3		ARTD	160	3				
ART	108	Fundamentals of Three-Dimensional Art II	3		ARTD	Elective	3				
ART	109	Art History: Jewish Art from Antiquity-Modern Israel	3		ARTH	Elective	3	ART			
ART	110	History of Photography	3	F2 904	ARTH	Elective	3	ART			
ART	111	Art History: Prehistoric to Renaissance	3	F2 901	ARTH	100	3	ART	GLO		
ART	112	Art History: Renaissance to Modern	3	F2 902	ARTH	102	3	ART	GLO		
ART	113	Art History: Modern Art (Twentieth Century)	3	F2 902	ARTH	302	3	ART		May not use to fulfill 300-level req in major/minor	
ART	114	Art History: Art of Non-Western World	3	F2 903N	ARTH	Elective	3	ART			
ART	115	Beginning Photography	3		ARTD	175	3	ART			
ART	116	Alternative Photographic Processes	3		ARTD	Elective	3				
ART	117	Digital Photography	3		ARTD	275	3				
ART	120	Introduction to Museum Studies	3		ARTH	202	3				
ART	122	Art History: Contemporary Art	3		ARTH	304	3			May not use to fulfill 300-level req in major/minor	

COURSE SUBSTITUTIONS FOR STUDENTS TRANSFERRING FROM OAKTON COLLEGE to NORTH CENTRAL COLLEGE

Based on the 2024-2025 Oakton College Catalog and the 2024-2025 North Central College Catalog

Oakton College Courses					NCC Courses			NCC General Education and Comments			
DEPT	NUM	COURSE TITLE	SEM CRED	IAI EQUIV	Dept	Number	Credit	GENERAL EDUCATION		COMMENT	
ART	125	History of Graphic Design	3		ARTH	Elective	3				
ART	131	Drawing I	3		ARTD	120	3	ART			
ART	132	Painting I	3		ARTD	130	3	ART			
ART	134	Ceramics I	3		ARTD	150	3	ART			
ART	145	Watercolor I	3		ARTD	135	3				
ART	215	Color Photography	3		ARTD	Elective	3	ART			
ART	216	Intermediate Digital Imaging	3		ARTD	105	3				
ART	217	Advanced Digital Imaging	3		ARTD	Elective	3				
ART	218	Advanced Black and White Photography	3		ARTD	Elective	3				
ART	219	Photographic Lighting	3		No	Credit	0				
ART	220	Advanced Digital Photography	3		ARTD	Elective	3				
ART	222	View Camera	3		ARTD	Elective	3				
ART	223	Landscape Photography Field Study	3		ARTD	Elective	3				
ART	224	Introduction to Graphic Design	3		ARTD	140	3			Elective if ART 250 completed	
ART	225	Graphic Design Layout and Typography	3		ARTD	242	3				
ART	227	Medium Format Photography	3		ARTD	Elective	3				
ART	229	Advanced Studio Lighting	3		No	Credit	0				
ART	230	Architectural Photography	3		ARTD	Elective	3				
ART	231	Drawing II	3		ARTD	220	3				
ART	232	Painting II	3		ARTD	230	3				
ART	234	Ceramics II	3		ARTD	250	3				
ART	237	Documentary Photography	3		ARTD	Elective	3				
ART	240	Museum Studies: Field Experience	3		No	Credit	0				
ART	243	Figure Drawing I	3		ARTD	225	3				
ART	244	Designing Branding and Logos	3		No	Credit	3				
ART	245	Watercolor II	3		ARTD	Elective	3				
ART	250	Introduction to Computer Art	3		ARTD	140	3				
ART	251	Advanced Computer Art	3		ARTD	Elective	3				
ART	253	Figure Drawing II	3		ARTD	Elective	3				
ART	256	Advanced Graphic Design	3		ARTD	244	3				
ART	257	Advanced Masking and Compositing	3		ARTD	Elective	3				
ART	259	Introduction to Web Design	3		ARTD	245	3			Only one of ART 259 or CIS 131 transfer	
ART	260	Intro to 3-D Animation and Multimedia	3		ARTD	Elective	3				
ART	261	Advanced 3-D Animation and Multimedia	3		ARTD	382	3			May not use to fulfill 300-level req in major/minor	
ART	262	Introduction Sound Design	3		MEDI	385	3			May not use to fulfill 300-level req in major/minor	
ART	263	Introduction to Motion Graphics	3		ARTD	340	3			May not use to fulfill 300-level req in major/minor	
ART	264	Multimedia Authoring	3		MEDI	Elective	3				
ART	267	Web Layout Design and Typography	3		MEDI	Elective	3				
ART	268	Digital 2D Animation and Multimedia	3		ARTD	280	3				
ART	270	3D Illustration	3		ARTD	Elective	3				
ART	271	Advanced Multimedia Authoring	3		MEDI	Elective	3				
ART	272	Portfolio Development	3		No	Credit	0				
ART	273	Animation for the Web	3		ARTD	Elective	3				
ART	274	Game Modeling and Character Development	3		MEDI	Elective	3				
ART	275	Game Systems and Design	3		MEDI	Elective	3				
ART	277	Color Management	3		No	Credit	0				
ART	278	The Digital Darkroom	3		No	Credit	0				

COURSE SUBSTITUTIONS FOR STUDENTS TRANSFERRING FROM OAKTON COLLEGE to NORTH CENTRAL COLLEGE

Based on the 2024-2025 Oakton College Catalog and the 2024-2025 North Central College Catalog

Oakton College Courses					NCC Courses			NCC General Education and Comments				
DEPT	NUM	COURSE TITLE	SEM CRED	IAI EQUIV	Dept	Number	Credit	GENERAL EDUCATION			COMMENT	
ART	290	Topics in Art	1-4			Elective					Evaluated individually	
ATA		Automotive Technology (Apprentices)			No	Credit	0				No credit transfers from this department	
ATR	115	Descriptive Astronomy	3	P1 906	PHYS	110	3	SCI			Only one of ATR 115 or 120 transfers	
ATR	120	Practical Astronomy	4	P1 906L	PHYS	110	4	SCI			Only one of ATR 115 or 120 transfers	
BIO	101	Introduction to Life Science	4	L1 900L	BIOL	Elective	4	SCI				
BIO	103	A Survey of Ecology	3		BIOL	Elective	3	SCI				
BIO	104	Human Genetics (non-laboratory course)	3	L1 906	BIOL	Elective	3	SCI			Only one of BIO 104 or BIO 105 transfers	
BIO	105	Human Genetics	4		BIOL	Elective	4				Only one of BIO 104 or BIO 105 transfers	
BIO	106	Introduction to Environmental Science	4	L1 905L	BIOL	106	4	SCI				
BIO	107	Ecological Restoration	4		BIOL	Elective	4	SCI				
BIO	109	Plants and Society	3		BIOL	Elective	3	SCI				
BIO	110	Sex, Gender, Health	3		BIOL	Elective	3	SCI				
BIO	112	Essentials of Nutrition	3		BCHM	140	3	SCI				
BIO	114	Basic Human Anatomy and Physiology	3		BIOL	Elective	3					
BIO	116	Microbe and Society	3		BIOL	Elective	3					
BIO	121	General College Biology I	4	L1 900L	BIOL	Elective	4	SCI				
BIO	122	General College Biology II	4		BIOL	Elective	4	SCI				
BIO	231	Human Anatomy And Physiology I	4		BIOL	201	4				Only one of BIO 231 or BIO 233 transfers	
BIO	232	Human Anatomy And Physiology II	4		BIOL	202	4				Only one of BIO 232 or BIO 234 transfers	
BIO	233	Non-Cadaver Human Anatomy and Physiology I	4		BIOL	201	4				Only one of BIO 233 or BIO 231 transfers	
BIO	234	Non-Cadaver Human Anatomy and Physiology II	4		BIOL	202	4				Only one of BIO 234 or BIO 232 transfers	
BIO	240	Interdisciplinary Undergraduate Lab Research	3		BIOL	Elective	2					
BIO	242	Pathophysiology and Human Disease	3		BIOL	Elective	3					
BIO	244	Principles of Pharmacology	3		No	Credit	0					
BIO	251	Microbiology	4		BIOL	145	4					
BIO	290	Topics in Biology	1-4			Elective					Evaluated individually	
BNA		Basic Nurse Assistant Training			No	Credit	0				No credit transfers from this department	
BUS	101	Introduction to Business	3		SBEN	100	3	SOC	ETH	GLO		
BUS	107	Business Ethics	3		PHIL	210	3	HUM	ETH		Only one of BUS 107 or PHL 107 transfers	
BUS	110	Personal Finance	3		SBEN	210	3	WEL				
BUS	221	Business Law	3		BUSN	205	3	ETH			Only one of BUS 221 or BUS 225 transfers	
BUS	222	Business Law	3		BUSN	Elective	3					
BUS	225	The Legal Environment of Business	3		BUSN	205	3	ETH			Only one of BUS 221 or BUS 225 transfers	
BUS	230	Principles of Finance	3		BUSN	Elective	3					
BUS	292	Topics in Business	1-4			Elective					Evaluated individually	
CAB	140	Database Applications Using Access	3		INFS	160	3					
CAB		All Other Computer Applications for Bus Courses			No	Credit	0					
CAD		Computer Aided Design			No	Credit	0				No credit transfers from this department	
CHI	101	Beginning Chinese I	4		CHNS	101	4					
CHI	102	Beginning Chinese II	4		CHNS	102	4					
CHI	105	Conversational Chinese	3		CHNS	Elective	3				Consult MCL department for placement	
CHI	201	Intermediate Chinese I	4		CHNS	201	4					
CHI	202	Intermediate Chinese II	4		CHNS	202	4	HUM				
CHM	101	Introductory Chemistry	4	P1 902L	CHEM	Elective	4	SCI			Only one of CHM 101 or CHM 105 transfers	
CHM	105	Elements of Chemistry	4	P1 902L	CHEM	Elective	4	SCI			Only one of CHM 101 or CHM 105 transfer	
CHM	121	General College Chemistry I	4	P1 902L	CHEM	121	4	SCI				
CHM	122	General College Chemistry II	4		CHEM	122	4					

COURSE SUBSTITUTIONS FOR STUDENTS TRANSFERRING FROM OAKTON COLLEGE to NORTH CENTRAL COLLEGE

Based on the 2024-2025 Oakton College Catalog and the 2024-2025 North Central College Catalog

Oakton College Courses					NCC Courses			NCC General Education and Comments			
DEPT	NUM	COURSE TITLE	SEM CRED	IAI EQUIV	Dept	Number	Credit	GENERAL EDUCATION		COMMENT	
CHM	207	Elementary Organic Chemistry	5		CHEM	Elective	5				
CHM	221	Organic Chemistry I	4		CHEM	251	4			Only one of CHM 221, 223 or 225 transfers	
CHM	222	Organic Chemistry II	4		CHEM	252	4			Only one of CHM 222, 224 or 226 transfers	
CHM	223	Organic Chemistry I	5		CHEM	251	5			Only one of CHM 221, 223 or 225 transfers	
CHM	224	Organic Chemistry II	5		CHEM	252	5			Only one of CHM 222, 224 or 226 transfers	
CHM	225	Organic Chemistry I Lecture	4		CHEM	251	4			Only one of CHM 221, 223 or 225 transfers	
CHM	226	Organic Chemistry II Lecture	4		CHEM	252	4			Only one of CHM 222, 224 or 226 transfers	
CHM	227	Organic Chemistry I Laboratory	2		CHEM	Elective	2			Lab must be completed with CHM 225 for credit	
CHM	228	Organic Chemistry II Laboratory	2		CHEM	Elective	2			Lab must be completed with CHM 226 for credit	
CHM	229	Biochemistry (non-lab)	3		BCHM	Elective	3				
CHM	240	Interdisciplinary Undergrad Lab Research	3		CHEM	Elective	2				
CHM	290	Topics in Chemistry	1-4			Elective				Evaluated individually	
CIS	090	Computers for Non Users	2		No	Credit	0				
CIS	101	Introduction to Computer Information Systems	3		No	Credit	0				
CIS	103	Computer Software and Concepts	4		No	Credit	0				
CIS	111	Fundamentals of the Internet	2		No	Credit	0				
CIS	113	Introduction Programming using Visual Basic .NET	3		CSCE	Elective	3				
CIS	116	Intro to the MS - Windows Operating System	2		No	Credit	0				
CIS	118	Linux Operating System	2		No	Credit	0				
CIS	131	Web Page Development	4		INFS	115	3			Only one of ART 259 or CIS 131 transfer?	
CIS	143	Introduction to SQL	3		No	Credit	0				
CIS	145	Database Fundamentals I	4		CSCE	Elective	4				
CIS	148	Introduction to Database-Driven Web Sites	3		No	Credit	0				
CIS	152	Web Development Tools	3		No	Credit	0				
CIS	171	Advanced Web Page Development	3		INFS	Elective	3				
CIS	180	Introduction to Visual Basic .NET Programming	4		CSCE	Elective	4			Consult CSCE department for placement	
CIS	188	Active Server Pages	4		No	Credit	0				
CIS	201	Information Systems for Business	3		No	Credit	0				
CIS	203	Managing Information Systems	3		INFS	Elective	3				
CIS	204	Introduction to Systems Analysis and Design	3		BUSN	Elective	3				
CIS	205	Documentation and Technical Writing	3		No	Credit	0				
CIS	206	Software Cybersecurity	3		No	Credit	0				
CIS	208	Visual Basic for Applications	4		No	Credit	0				
CIS	209	Database Programming For PCs	4		INFS	Elective	4				
CIS	210	Visual Basic.NET Prog Files and Databases	4		CSCE	Elective	4				
CIS	211	Java Programming	4		CSCE	160	4			Only 1 of CIS 211, CSC 155, CSC 156 or CSC 157 transfers	
CIS	213	Adv Topics in Visual Basic.NET Programming	4		CSCE	Elective	4				
CIS	214	Web Site Maintenance and Management	4		INFS	Elective	4				
CIS	215	Assembly Language for Microcomputers	4		CSCE	220	4				
CIS	218	Advanced LINUX Operating System	2		No	Credit	0				
CIS	220	Introduction to C Programming	4		CSCE	Elective	4			Consult CSCE department for placement	
CIS	222	Java Programming Using Files and Databases	4		CSCE	Elective	4				
CIS	227	C# Programming	4		CSCE	Elective	4			Consult CSCE department for placement	
CIS	228	Linux Administration	3		No	Credit	0				
CIS	231	Advanced Java Programming	4		CSCE	Elective	4				
CIS	232	Web Scripting	4		INFS	Elective	4				
CIS	236	Project Management	3		No	Credit	0				

COURSE SUBSTITUTIONS FOR STUDENTS TRANSFERRING FROM OAKTON COLLEGE to NORTH CENTRAL COLLEGE

Based on the 2024-2025 Oakton College Catalog and the 2024-2025 North Central College Catalog

Oakton College Courses					NCC Courses			NCC General Education and Comments			
DEPT	NUM	COURSE TITLE	SEM CRED	IAI EQUIV	Dept	Number	Credit	GENERAL EDUCATION			COMMENT
CIS	238	Linux Network Services Administration	3		No	Credit	0				
CIS	241	Database Management	3		INFS	160	3				
CIS	245	Database Fundamentals II	4		No	Credit	0				
CIS	247	Performance Tuning	4		No	Credit	0				
CIS	248	Web Database Management	4		No	Credit	0				
CIS	251	Computer Information Systems Internship	3			Elective					Evaluated individually
CIS	253	Project Management Certification Preparation	2		No	Credit	0				
CIS	257	Apps Programming for Apple Moblie Devices	4		CSCE	Elective	4				
CIS	258	Apps Programming for Android Moblie Devices	4		CSCE	Elective	4				
CIS	267	Adv Apps Programming using Apple Mobile Devices	4		CSCE	Elective	4				
CIS	268	Adv Apps Programming using Android Mobile Device	4		CSCE	Elective	4				
CIS	290	Topics in Computer Information Systems	1-4			Elective					Evaluated individually
CNB		Cannabis Dispensory & Patient Care			No	Credit	0				No credit transfers from this department
CNS		Computer Networking and Systems			No	Credit	0				No credit transfers from this department
COL		College Studies			No	Credit	0				No credit transfers from this department
CSC	155	C++ Computer Science I	3		CSCE	160	3				Only 1 of CIS 211, CSC 155, CSC 156 or CSC 157 transfers
CSC	156	Java Computer Science I	3		CSCE	160	3				Only 1 of CIS 211, CSC 155, CSC 156 or CSC 157 transfers
CSC	157	Python Computer Science I	3		CSCE	160	3				Only 1 of CIS 211, CSC 155, CSC 156 or CSC 157 transfers
CSC	170	Introduction to Numerical Methods	2		MATH	Elective	2				
CSC	171	C++ Programming for Engineers	1		CSCE	Elective	1				Only one of CSC 171, 172, 173 or 174 transfers
CSC	172	FORTRAN Programming for Engineers	1		CSCE	Elective	1				Only one of CSC 171, 172, 173 or 174 transfers
CSC	173	Java Programming for Engineers	1		CSCE	Elective	1				Only one of CSC 171, 172, 173 or 174 transfers
CSC	174	Python Programming for Engineers	1		CSCE	Elective	1				Only one of CSC 171, 172, 173 or 174 transfers
CSC	180	Introdution to Artificial Intelligence	3		No	Credit	0				
CSC	204	Computer Architecture and Organization	3		CSCE	320	3				May not use to fulfill 300-level req in major/minor
CSC	206	Software Cybersecurity	3		No	Credit	0				
CSC	240	C++ Data Structures	3		CSCE	210	3				Only one of CSC 240, CSC 241 or CSC 242 transfers
CSC	241	Java Data Structures	3		CSCE	210	3				Only one of CSC 240, CSC 241 or CSC 242 transfers
CAC	242	Python Data Structures	3		CSCE	210	3				Only one of CSC 240, CSC 241 or CSC 242 transfers
CSC	255	Objects and Algorithms	3		CSCE	Elective	3				
CSC	290	Topics in Computer Science	1-4			Elective					Evaluated individually
EAS	100	Introduction to Earth Science	4	P1 905L	ENVI	141	3	SCI			Only one of EAS 100 or EAS 121 transfers
EAS	101	Physical Geology	4	P1 907L	SCIE	Elective	4	SCI			
EAS	102	Historical Geology	4	P1 907L	SCIE	Elective	4	SCI			
EAS	105	Introduction to Weather And Climate	3	P1 905	SCIE	Elective	3	SCI			
EAS	110	Climate Change and Variability	3	P1 910	ENVI	105	3	SCI			
EAS	121	Physical Geography	3	P1 909	ENVI	141	3	SCI			Only one of EAS 100 or EAS 121 transfers
EAS	125	A Survey of Oceanography	3	P1 905	SCIE	Elective	3	SCI			
EAS	190	Geographic Information Systems I	4		ENVI	260	4	SCI			Only one of EAS 190 or GIS 190 transfers
EAS	191	Geographic Information Systems II	4		ENVI	Elective	4	SCI			Only one of EAS 191 or GIS 191 transfers
EAS	205	Environmental Geology	3		SCIE	Elective	3	SCI			
EAS	290	Topics in Earth Science	1-4			Elective					Evaluated individually
ECE	102	Child Growth And Development	3		PSYC	210	3				Only 1 of ECE 102, PSY 120 or PSY 211 transfers
ECE	104	Introduction to Early Childhood Education	3		NCCC	Elective	4				
ECE	106	Guidance of the Young Child	3		NCCC	Elective	3				
ECE	107	Observation and Assessment of the Young Child	3		NCCC	Elective	3				
ECE	108	Nutrition, Health and Safety for the Young Child	3		KINE	Elective	3				

COURSE SUBSTITUTIONS FOR STUDENTS TRANSFERRING FROM OAKTON COLLEGE to NORTH CENTRAL COLLEGE

Based on the 2024-2025 Oakton College Catalog and the 2024-2025 North Central College Catalog

Oakton College Courses					NCC Courses			NCC General Education and Comments			
DEPT	NUM	COURSE TITLE	SEM CRED	IAI EQUIV	Dept	Number	Credit	GENERAL EDUCATION		COMMENT	
ECE	125	Play and Creative Expression for the Young Child	3		NCCC	Elective	3				
ECE	152	Principles of Child Development	1		No	Credit	0				
ECE	153	Guiding Children and Managing the Classroom	1		No	Credit	0				
ECE	154	Activities and Resources for Young Children I	1		NCCC	Elective	1				
ECE	155	Activities and Resources for Young Children II	1		NCCC	Elective	1				
ECE	161	Intro to Infant and Toddler Care and Education	1		No	Credit	0				
ECE	165	Family Child Care Provider I	3		No	Credit	0				
ECE	166	Family Child Care Provider II	3		No	Credit	0				
ECE	180	The Exceptional Child	3		EDUC	330	3			May not use to fulfill 300-level req in major/minor	
ECE	215	Infant/Toddler Techniques	3		No	Credit	0				
ECE	216	Infant/Toddler Programming	3		No	Credit	0				
ECE	226	Lang Arts and Social Studies for the Young Child	3		NCCC	Elective	3				
ECE	227	Math and Science For The Young Child	3		NCCC	Elective	3				
ECE	228	Language Development of Children	3		NCCC	Elective	3				
ECE	255	Curriculum Design for Early Childhood Programs	3		EDUC	Elective	3				
ECE	257	Early Childhood Education Practicum	5		No	Credit	0				
ECE	258	Practicum II	5		No	Credit	0				
ECE	270	Child, Family and Community Relations	3		No	Credit	0				
ECE	273	Introduction to Early Childhood Administration	3		No	Credit	0				
ECE	274	Early Childhood Director Practicum	3		No	Credit	0				
ECE	280	Legal Aspects of Early Childhood Administration	1		No	Credit	0				
ECE	281	Fiscal Mgmt in Early Childhood Administration	2		No	Credit	0				
ECE	282	Marketing and PR Early Childhood Program Director	2		No	Credit	0				
ECE	283	Staff Mgmt & Human Relations in Early Chldhd Progs	1		No	Credit	0				
ECE	284	Leadership & Advocacy for Early Chldhd Prog Dir	1		No	Credit	0				
ECE	285	Communications for the Early Chldhd Prog Director	1		No	Credit	0				
ECE	290	Topics in Early Childhood Education	1-4			Elective				Evaluated individually	
ECO	110	Elements of Economics	3	S3 900	ECON	100	3	SOC			
ECO	201	Principles of Macroeconomics	3	S3 901	ECON	205	3	SOC			
ECO	202	Principles of Microeconomics	3	S3 902	ECON	200	3	SOC			
ECS		Elderly Care Support			No	Credit				No credit transfers from this department	
EDN	101	Introduction to Education	3		EDUC	101	3				
EDN	104	Pre-Clinical Observation in Education	1		EDUC	Elective	1			Max 30 clinical hours transfer	
EDN	180	Diversity of Schools and Society	3		EDUC	Elective	3				
EDN	201	Educational Psychology	3		PSYC	205	3			Only one of EDU 201 or PSY 201 transfers	
EDN	210	Technology in Education	3		EDUC	235	3				
EDN	280	Educating Exceptional Learners	3		EDUC	330	3			May not use to fulfill 300-level req in major/minor	
EDN	290	Topics in Educational Foundations	1-4			Elective				Evaluated individually	
EGL		All courses numbered below EGL 100			No	Credit	0				
EGL	101	Composition I	3	C1 900	ENGL	110	3	COMP			
EGL	102	Composition II	3	C1 901R	ENGL	110	3	COMP		or WRI if EGL 101 is completed	
EGL	110	Effective College Reading	3		No	Credit	0				
EGL	111	Introduction to Business and Technical Writing	3		No	Credit	0				
EGL	113	Introduction to Drama	3	H3 902	ENGL	Elective	3	HUM			
EGL	115	Introduction to Fiction	3	H3 901	ENGL	104	3	HUM			
EGL	117	Introduction to Poetry	3	H3 903	ENGL	106	3	HUM			
EGL	129	Introduction to Literature	3	H3 900	ENGL	Elective	3	HUM			

COURSE SUBSTITUTIONS FOR STUDENTS TRANSFERRING FROM OAKTON COLLEGE to NORTH CENTRAL COLLEGE

Based on the 2024-2025 Oakton College Catalog and the 2024-2025 North Central College Catalog

Oakton College Courses					NCC Courses			NCC General Education and Comments				
DEPT	NUM	COURSE TITLE	SEM CRED	IAI EQUIV	Dept	Number	Credit	GENERAL EDUCATION			COMMENT	
EGL	130	Introduction to Global Literature	3	H3 908N	ENGL	Elective	3	HUM	GLO			
EGL	131	Multicultural Literature in the U.S.	3	H3 910D	ENGL	332	3	HUM			May not use to fulfill 300-level req in major/minor	
EGL	132	LGBTQ+ Literature	3	HD 911D	ENGL	234	3	HUM	POW			
EGL	133	Women and Literature	3	HD 911D	GSST	Elective	3	HUM	POW			
EGL	134	Intro to African-American Literature	3	H3 910D	ENGL	232	3	HUM	POW			
EGL	135	Intro to Native American Literature	3	H3 910D	ENGL	Elective	3	HUM				
EGL	136	Introduction to Latino/a/x Literature	3		ENGL	Elective	3	HUM				
EGL	137	Introduction to Asian American Literature	3	H3 910D	ENGL	Elective	3	HUM				
EGL	140	Introduction to Science Fiction and Fantasy	3		ENGL	Elective	3					
EGL	141	Introduction to Children's Literature	3		ENGL	126	3	ART	ETH			
EGL	150	Introduction to Journalism	3		MEDI	225	3					
EGL	201	Introduction to Creative Writing	3		ENGL	210	3	ART				
EGL	202	Writing Fiction	3		ENGL	Elective	3	ART				
EGL	203	Writing Poetry	3		ENGL	Elective	3	ART				
EGL	204	Introduction to Screenwriting	3		MEDI	270	3					
EGL	211	Writing Digital Content	3		MEDI	200	3					
EGL	212	Technical Writing Applications	3		ENGL	Elective	3					
EGL	220	Introduction to Mass Communications	3		COMM	185	3	SOC	GLO	POW		
EGL	221	American Literature I: Beginnings to 1865	3	H3 914	ENGL	Elective	3	HUM				
EGL	222	American Literature II (Civil War to the Present)	3	H3 915	ENGL	208	3	HUM				
EGL	223	Contemporary American Literature	3		ENGL	208	3	HUM			or Elective if EGL 222 is completed	
EGL	229	[National/Regional] Literature	3		ENGL	Elective	3	HUM				
EGL	231	British Literature I (Anglo-Saxons to 1800)	3	H3 912	ENGL	202	3	HUM				
EGL	232	British Literature II (1800 to the present)	3	H3 913	ENGL	206	3	HUM				
EGL	234	Introduction to Shakespeare	3	H3 905	ENGL	302	3	HUM			May not use to fulfill 300-level req in major/minor	
EGL	241	Masterpieces of Western Literature I	3	H3 906	ENGL	Elective	3	HUM				
EGL	242	Masterpieces of Western Literature II	3	H3 907	ENGL	Elective	3	HUM				
EGL	260	Introduction to Linguistics	3		ENGL	270	3					
EGL	290	Topics In English	1-4			Elective					Evaluated individually	
ELT		Electronics/Computer Tech Courses			No	Credit	0				No credit transfers from this department	
ENG	120	Engineering Graphics	3		ENGR	Elective	3					
ENG	211	Analytical Mechanics (Statics)	3		PHYS	211	3					
ENG	212	Analytical Mechanics (Dynamics)	3		PHYS	Elective	3					
ENG	217	Strength of Materials	3		PHYS	Elective	3					
ENG	220	Engineering Circuit Analysis	4		ELEC	250	4					
ENG	250	Introduction to Digital Systems	4		ELEC	200	4					
FIR		Fire Science			No	Credit	0				No credit transfers from this department	
FIS		Financial Services			No	Credit	0				No credit transfers from this department	
FME		Facilities Management And Engineering			No	Credit	0				No credit transfers from this department	
FRE	101	Beginning French I	4		FREN	101	4					
FRE	102	Beginning French II	4		FREN	102	4					
FRE	105	Conversational French	3		FREN	Elective	3				Consult MCL department for placement	
FRE	201	Intermediate French I	4		FREN	201	4					
FRE	202	Intermediate French II	4	H1 900	FREN	202	4	HUM				
FRE	205	French Conversation and Composition	3	H1 900	FREN	Elective	3	HUM			Consult MCL department for placement	
FRE	210	Introduction to French Literature	3	H3 916	FREN	Elective	3	HUM				
GBS	101	Introduction to Global Business	3		BUSN	201	3					

COURSE SUBSTITUTIONS FOR STUDENTS TRANSFERRING FROM OAKTON COLLEGE to NORTH CENTRAL COLLEGE

Based on the 2024-2025 Oakton College Catalog and the 2024-2025 North Central College Catalog

Oakton College Courses					NCC Courses			NCC General Education and Comments				
DEPT	NUM	COURSE TITLE	SEM CRED	IAI EQUIV	Dept	Number	Credit	GENERAL EDUCATION			COMMENT	
GBS	205	Import/Export Compliance	3		No	Credit	0					
GBS	212	Global Sourcing and Import Procedures	3		No	Credit	0					
GBS	225	Global Logistics and Documentation	3		No	Credit	0					
GBS	235	Global Marketing	3		MKTG	Elective	3					
GBS	236	Current Global Events and Perspective	3		BUSN	Elective	3					
GBS	240	Global Management	3		BUSN	Elective	3					
GBS	250	Interest Rates and Foreign Exchange Markets	3		No	Credit	0					
GBS	253	Practicum	3			Elective					Evaluated individually	
GBS	290	Topics in Global Business	1-4			Elective					Evaluated individually	
GEG	120	World Regional Geography	3	S4 900N	SOCI	Elective	3	HUM	SOC			
GEG	122	Cultural Geography	3	S4 900N	SOCI	Elective	3	SOC	GLO			
GEG	130	Introduction to Economic Geography	3	S4 903N	ECON	Elective	3	SOC	GLO			
GEG	290	Topics in Geography	1-4			Elective					Evaluated individually	
GER	101	Beginning German I	4		GRMN	101	4					
GER	102	Beginning German II	4		GRMN	102	4					
GER	105	Conversational German	3		GRMN	Elective	3				Consult MCL department for placement	
GER	201	Intermediate German I	4		GRMN	201	4					
GER	202	Intermediate German II	4	H1 900	GRMN	202	4	HUM				
GER	205	German Conversation and Composition	3	H1 900	GRMN	Elective	3	HUM			Consult MCL department for placement	
GER	210	Introduction to German Literature	3	H3 916	GRMN	325	3	HUM			May not use to fulfill 300-level req in major/minor	
GIS	190	Geographic Information Systems I	4		ENVI	260	4	SCI			Only one of EAS 190 or GIS 190 transfers	
GIS	191	Geographic Information Systems II	4		ENVI	Elective	4	SCI			Only one of EAS 191 or GIS 191 transfers	
GRD	101	Introduction to Visual Communication	3		ARTD	100	3	ART				
GRD	225	Intr to Digital Content Creation & Streamng Media	3		MEDI	101	3					
GRD	250	Introduction to Video Production	3		MEDI	222	3					
GRD	251	Graphic Design Practicum	3			Elective					Evaluated individually	
GRD	252	Animation and Multimedia Practicum	3			Elective					Evaluated individually	
GRD	253	Web Graphic Page Design Practicum	3			Elective					Evaluated individually	
GRD	254	Photography Practicum	3			Elective					Evaluated individually	
HBW	101	Beginning Hebrew I	4		LANG	101	4					
HBW	102	Beginning Hebrew II	4		LANG	102	4					
HBW	105	Conversational Hebrew	3		LANG	Elective	3					
HBW	201	Intermediate Hebrew I	4		LANG	Elective	4					
HBW	202	Intermediate Hebrew II	4	H1 900	LANG	Elective	4	HUM				
HCT		Public Health Contact Tracer			No	Credit	0				No credit transfers from this department	
HIN	101	Beginning Hindi I	4		LANG	101	4					
HIN	102	Beginning Hindi II	4		LANG	102	4					
HIN	201	Intermediate Hindi I	4		LANG	Elective	4					
HIN	202	Intermediate Hindi II	4		LANG	Elective	4					
HIS	111	United States History to 1877	3	S2 900	HIST	Elective	3	SOC	GLO	POW		
HIS	112	United States History From 1877	3	S2 901	HIST	Elective	3	SOC	GLO	POW		
HIS	113	History of Native Americans	3		HIST	Elective	3	SOC				
HIS	114	African American History: Beginnings to 1865	3		HIST	Elective	3					
HIS	115	African Amer History: Reconstruction to Present	3		HIST	112	3					
HIS	120	United States History Since 1945	3	S2 901	HIST	Elective	3	SOC	ETH	POW		
HIS	121	History of the Vietnam War	3		HIST	Elective	3					
HIS	131	Western Civilization to 1650	3	S2 902	HIST	101	3	HUM				

COURSE SUBSTITUTIONS FOR STUDENTS TRANSFERRING FROM OAKTON COLLEGE to NORTH CENTRAL COLLEGE

Based on the 2024-2025 Oakton College Catalog and the 2024-2025 North Central College Catalog

Oakton College Courses					NCC Courses			NCC General Education and Comments				
DEPT	NUM	COURSE TITLE	SEM CRED	IAI EQUIV	Dept	Number	Credit	GENERAL EDUCATION			COMMENT	
HIS	132	Western Civilization From 1650	3	S2 903	HIST	102	2	HUM	GLO			
HIS	135	History of the Middle Ages	3		HIST	Elective	3					
HIS	136	Introduction to Jewish Studies	3		HIST	Elective	3					
HIS	139	History of the Non-Western World to 1900	3	S2 904N	HIST	Elective	3	SOC				
HIS	140	Hist of Contemporary Non-Western Civilization	3	S2 905N	HIST	Elective	3	SOC				
HIS	203	History of South Asia I	3	S2 917N	HIST	Elective	3	SOC				
HIS	204	History of South Asia II	3	S2 917N	HIST	Elective	3	SOC				
HIS	206	History of the Ancient World: Greece	3		HIST	Elective	3	SOC			HIST 206 + HIST 207 = HIST 255	
HIS	207	History of the Ancient World: Rome	3		HIST	Elective	3	SOC			HIST 206 + HIST 207 = HIST 255	
HIS	208	History of Ancient Africa	3	S2 906N	HIST	Elective	3	SOC				
HIS	211	History of Modern Africa	3	S2 907N	HIST	185	3	SOC				
HIS	216	History of Modern China	3	S2 915N	HIST	260	3	SOC	GLO			
HIS	221	History of Great Britain and Ireland to 1600	3		HIST	Elective	3	SOC				
HIS	222	History Great Britain and Ireland 1600 to Present	3		HIST	140	3	SOC				
HIS	223	Environmental History of the U.S.	3		HIST	248	3	HUM	ETH	POW		
HIS	225	Hist of the Islamic Middle East from 7th C to 1918	3	S2 918N	HIST	Elective	3	SOC				
HIS	226	Hist of the Islamic Middle East in Modern Times	3	S2 919N	HIST	180	3	SOC	ETH	GLO		
HIS	227	History of the Arab-Israeli Conflict	3		HIST	Elective	3	SOC				
HIS	228	History of the Holocaust	3		HIST	Elective	3	SOC				
HIS	229	History of Genocide	3		HIST	Elective	3	SOC				
HIS	233	History of Latin America to Independence	3	S2 910N	HIST	Elective	3	SOC				
HIS	234	History Modern Latin America	3	S2 911N	HIST	175	3	SOC				
HIS	235	Women In American History	3		HIST	242	3	SOC				
HIS	236	Women In Western Civilization	3		HIST	Elective	3	SOC				
HIS	237	Women in Non-Western Civilization	3		HIST	Elective	3	SOC				
HIS	240	History of Illinois	3		HIST	Elective	3	HUM	GLO	POW		
HIS	241	History of Chicagoland	3		HIST	120	3	SOC	GLO	POW		
HIS	290	Topics in History	1-4			Elective					Evaluated individually	
HIT	104	Medical Terminology	3		HTSC	156	3					
HIT		All other Health Information Technology Courses			No	Credit	0				No credit transfers from this department	
HSV		Human Services			No	Credit	0				No credit transfers from this department	
HUM	120	Western Culture & Arts: Beginning-Middle Ages	3	HF 902	NCCC	Elective	3	HUM				
HUM	121	Western Culture & Arts: Renaissance-20th Cent	3	HF 903	NCCC	Elective	3	HUM				
HUM	122	Contemporary Culture And the Arts	3	HF 901	NCCC	Elective	3	HUM				
HUM	123	Introduction to Art	3	F2 900	ARTD	Elective	3	ART				
HUM	124	African-American Culture and the Arts	3	HF 906D	NCCC	Elective	3	HUM				
HUM	125	Introduction to Music	3	F1 901	MUSI	150	3	ART				
HUM	126	Introduction to Music Theater	3		THEA	Elective	3	HUM				
HUM	127	Introduction to Philosophy	3	H4 900	PHIL	100	3	HUM	ETH			
HUM	131	Introduction to Theater	3	F1 907	THEA	102	3	ART				
HUM	133	Introduction to Architecture	3		NCCC	Elective	3	HUM				
HUM	135	Introduction to US Dance Practices	3	F1 911D	DNCE	Elective	3	ART	POW			
HUM	140	Introduction to Women's and Gender Studies	3	H9 900	GSST	100	3	HUM	POW			
HUM	141	Introduction to LGBTQ Studies	3	H9 900	GSST	370	3	HUM	POW		May not use to fulfill 300-level req in major/minor	
HUM	142	Women and Creativity	3	HF 907D	GSST	Elective	3	HUM				
HUM	150	Environmental Humanities	3	HF 900	ENVI	Elective	3	HUM				
HUM	160	Introduction to Film	3	F2 909	FILM	100	3	ART				

COURSE SUBSTITUTIONS FOR STUDENTS TRANSFERRING FROM OAKTON COLLEGE to NORTH CENTRAL COLLEGE

Based on the 2024-2025 Oakton College Catalog and the 2024-2025 North Central College Catalog

Oakton College Courses					NCC Courses			NCC General Education and Comments			
DEPT	NUM	COURSE TITLE	SEM CRED	IAI EQUIV	Dept	Number	Credit	GENERAL EDUCATION		COMMENT	
HUM	161	Global Cinema	3	F2 909	FILM	300	3	ART	GLO	May not use to fulfill 300-level req in major/minor	
HUM	162	Film and Literature	3		FILM	Elective	3	HUM			
HUM	165	Introduction to World Music	3	F1 903N	MUSI	156	3	ART	GLO		
HUM	210	World Mythologies	3	H9 901	CLSS	250	3	HUM			
HUM	220	Asian Humanities	3	HF 904N	EAST	Elective	3	HUM			
HUM	242	Women, Art and Culture	3	F2 907D	GSST	Elective	3	ART			
HUM	260	Perspectives on Film	3	F2 908	FILM	Elective	3	ART			
HUM	290	Topics In Humanities	1-4			Elective				Evaluated individually	
INS	200	Independent Study	1-4			Elective				Evaluated individually	
ITL	101	Beginning Italian I	4		LANG	101	4				
ITL	102	Beginning Italian II	4		LANG	102	4				
ITL	105	Conversational Italian	3		LANG	Elective	3				
ITL	201	Intermediate Italian I	4		LANG	Elective	4				
ITL	202	Intermediate Italian II	4	H1 900	LANG	Elective	4	HUM			
ITL	205	Italian Conversation and Composition	3	H1 900	LANG	Elective	3	HUM			
JPN	101	Beginning Japanese I	4		JAPN	101	4				
JPN	102	Beginning Japanese II	4		JAPN	102	4				
JPN	105	Conversational Japanese	3		JAPN	Elective	3				
JPN	201	Intermediate Japanese I	4		JAPN	201	4	HUM			
JPN	202	Intermediate Japanese II	4	H1 900	JAPN	202	4	HUM	SOC		
JPN	205	Japanese Conversation and Composition	3	H1 900	JAPN	Elective	3	HUM		Consult MCL department for placement	
JPN	206	Japanese Conversation and Reading	3	H1 900	JAPN	Elective	3	HUM		Consult MCL department for placement	
KOR	101	Beginning Korean I	4		LANG	101	4				
KOR	102	Beginning Korean II	4		LANG	102	4				
KOR	105	Conversational Korean	3		LANG	Elective	3				
KOR	201	Intermediate Korean I	4		LANG	Elective	4				
KOR	202	Intermediate Korean II	4	H1 900	LANG	Elective	4	HUM			
LAE	101	Introduction to Criminal Justice	3		SOCI	340	3	GLO		May not use to fulfill 300-level req in major/minor	
LAE	201	Criminology	3		CRIM	100	3				
LAE	221	Criminal Law	3		SOCI	Elective	3				
LAE	245	Juvenile Delinquency	3		SOCI	221	3				
LAE		All other Law Enforcement & Crim Justice Courses	3		No	Credit	0			No credit transfers from this department	
MAP		Medical Assistant			No	Credit	0			No credit transfers from this department	
MAT		All courses numbered below MAT 100			No	Credit	0				
MAT	102	Mathematics For Health Careers	2		No	Credit	0				
MAT	111	Business and Consumer Mathematics	4		No	Credit	0				
MAT	114	Applied Mathematics I	4		No	Credit	0				
MAT	116	Applied Mathematics II	3		No	Credit	0				
MAT	122	Trigonometry	3		MATH	140	3			Only one of MAT 122 or MAT 149 transfers	
MAT	125	General Education Mathematics	4	M1 901	MATH	120	4	QUA			
MAT	128	Foundations of Math for Elementary Teachers I	3		MATH	107	3				
MAT	129	Foundations of Math for Elementary Teachers II	3	M1 903	MATH	108	3	QUA			
MAT	131	Elementary Statistics	4	M1 902	PSYC	250	4	QUA		Only one of MAT 131 or MAT 190 transfers	
MAT	140	College Algebra	4		MATH	Elective	4				
MAT	143	Finite Mathematics	4	M1 906	MATH	130	4	QUA			
MAT	144	Discrete Mathematics	3	M1 905	CSCE	230	3	QUA			
MAT	149	Precalculus	5		MATH	140	5			Only one of MAT 122 or MAT 149 transfers	

COURSE SUBSTITUTIONS FOR STUDENTS TRANSFERRING FROM OAKTON COLLEGE to NORTH CENTRAL COLLEGE

Based on the 2024-2025 Oakton College Catalog and the 2024-2025 North Central College Catalog

Oakton College Courses					NCC Courses			NCC General Education and Comments			
DEPT	NUM	COURSE TITLE	SEM CRED	IAI EQUIV	Dept	Number	Credit	GENERAL EDUCATION		COMMENT	
MAT	180	Calculus for Business and Social Science	4	M1 900	MATH	Elective	4	QUA			
MAT	190	Business Statistics	4		BUSN	265	4	QUA		Only one of MAT 131 or MAT 190 transfers	
MAT	250	Calculus I	5	M1 900	MATH	151	5	QUA			
MAT	251	Calculus II	4	M1 900	MATH	152	4	QUA			
MAT	252	Calculus III	4	M1 900	MATH	253	5	QUA			
MAT	260	Introduction to Linear Algebra	3		MATH	300	3			May not use to fulfill 300-level req in major/minor	
MAT	262	Ordinary Differential Equations	3		MATH	315	3			May not use to fulfill 300-level req in major/minor	
MAT	290	Topics in Mathematics	1-4			Elective				Evaluated individually	
MEC		Mechanical Design			No	Credit	0			No credit transfers from this department	
MFG		Manufacturing Technology			No	Credit	0			No credit transfers from this department	
MGT	101	Fundamentals of Supervision	3		BUSN	Elective	3				
MGT	106	Time and Stress Management	3		No	Credit	0				
MGT	117	Human Relations in the Workplace	3		No	Credit	0				
MGT	118	Effective Management Communications	3		COMM	Elective	3				
MGT	121	Principles of Management	3		MGMT	305	3			May not use to fulfill 300-level req in major/minor	
MGT	130	Purchasing Management	3		BUSN	Elective	3				
MGT	138	Introduction to Professional & Personal Coaching	3		No	Credit	0				
MGT	140	Supervisory Development	3		BUSN	Elective	3				
MGT	155	Operations and Supply Chain Management	3		MGMT	Elective	0				
MGT	156	Intro to Transportation, Warehousing & Logistics	3		No	Credit	0				
MGT	160	Small Business Management	3		BUSN	Elective	3				
MGT	165	Human Resources Management	3		MGMT	345	3			May not use to fulfill 300-level req in major/minor	
MGT	170	Learning and Development	3		MGMT	355	3			May not use to fulfill 300-level req in major/minor	
MGT	180	Introduction to Business Security Management	3		No	Credit	0				
MGT	181	The Principles of Business Asset Protection	3		No	Credit	0				
MGT	182	Emergency and Contingency Planning	3		No	Credit	0				
MGT	205	Organizational Behavior	3		BUSN	Elective	3				
MGT	210	Business Etiquette	3		No	Credit	0				
MGT	220	Managing Effective Teams	3		MGMT	Elective	3				
MGT	222	Conflict Management	3		No	Credit	0				
MGT	225	Effective Leadership Skills	3		No	Credit	0				
MGT	228	Change Management	3		No	Credit	0				
MGT	231	Safety and Risk Management	3		No	Credit	0				
MGT	232	Diversity, Equity and Inclusion in the Workplace	3		No	Credit	0				
MGT	236	Project Management	3		No	Credit	0				
MGT	238	Professional and Personal Coaching II	3		No	Credit	0				
MGT	251	Practicum	3			Elective				Evaluated individually	
MGT	253	Project Management Certification Preparation	2		No	Credit	0				
MGT	266	Talent Acquisition	3		BUSN	Elective	3				
MGT	268	Human Resources Management Law	3		BUSN	Elective	3				
MGT	271	Cases in Human Resource Management	3		No	Credit	0				
MGT	276	Corporate Soc Responsibility & Decision Making	3		SBEN	Elective	0				
MGT	285	Negotiations	3		No	Credit	0				
MGT	288	Strategic Management	3		BUSN	Elective	3				
MGT	290	Special Topics in Management	1-4			Elective				Evaluated individually	
MKT	110	The Impact of RFID in the Supply Chain	3		No	Credit	0				
MKT	115	Creativity in Business	3		No	Credit	0				

COURSE SUBSTITUTIONS FOR STUDENTS TRANSFERRING FROM OAKTON COLLEGE to NORTH CENTRAL COLLEGE

Based on the 2024-2025 Oakton College Catalog and the 2024-2025 North Central College Catalog

Oakton College Courses				NCC Courses			NCC General Education and Comments			
DEPT	NUM	COURSE TITLE	SEM CRED	IAI EQUIV	Dept	Number	Credit	GENERAL EDUCATION		COMMENT
MKT	131	Principles of Marketing	3		MKTG	300	3			May not use to fulfill 300-level req in major/minor
MKT	132	Marketing for Nonprofit Organizations	3		BUSN	Elective	3			
MKT	134	Fundraising and Grant Writing	3		No	Credit	0			
MKT	150	Sports Marketing	3		SMGT	210	3			
MKT	151	Customer Service	3		No	Credit	0			
MKT	161	Principles of Professional Selling	3		MKTG	340	3			May not use to fulfill 300-level req in major/minor
MKT	165	e-Business	3		No	Credit	0			
MKT	215	Introduction to Advertising	3		MKTG	Elective	3			
MKT	230	Consumer Behavior	3		MKTG	310	3			May not use to fulfill 300-level req in major/minor
MKT	236	Marketing Research	3		MKTG	370	3			May not use to fulfill 300-level req in major/minor
MKT	240	Introduction to Public Relations	3		COMM	250	3			
MKT	244	Advanced Public Relations and Special Events	3		No	Credit	0			
MKT	247	Cases in Public Relations Management	3		No	Credit	0			
MKT	248	Marketing Management	3		MKTG	Elective	3			
MKT	249	Customer Relationship Management	3		No	Credit	0			
MKT	251	Practicum Marketing	3			Elective				Evaluated individually
MKT	253	Crisis and Issue Management	3		No	Credit	0			
MKT	260	Events Planning	3		No	Credit	0			
MKT	261	Advanced Professional Selling	3		No	Credit	0			
MKT	262	Meeting and Convention Planning	3		No	Credit	0			
MKT	266	New Media and Technology in Marketing	3		No	Credit	0			
MKT	270	Integrated Marketing Communications	3		No	Credit	0			
MKT	271	Brand Marketing	3		No	Credit	0			
MKT	275	Social Media Tools for Business	3		No	Credit	0			
MKT	290	Topics In Marketing	1-4			Elective				Evaluated individually
MLT		Medical Laboratory Technology			No	Credit	0			No credit transfers from this department
MUS	104	Fundamentals of Music	3		MUSI	Elective	3			
MUS	105	Instrumental Ensemble I	1		MUEN	Elective	1			
MUS	106	Instrumental Ensemble II	1		MUEN	Elective	1			
MUS	107	Class Piano I	2		MUAL	110	2			
MUS	108	Class Piano II	2		MUAL	110	2			
MUS	109	Instrumental Percussion Ensemble I	1		MUEN	Elective	1			
MUS	110	Instrumental Percussion Ensemble II	1		MUEN	Elective	1			
MUS	111	Choir I	1		MUEN	100	1			
MUS	112	Choir II	1		MUEN	100	1			
MUS	115	Jazz Combo I	1		MUEN	121	1			
MUS	116	Jazz Combo II	1		MUEN	121	1			
MUS	117	Jazz Band I	1		MUEN	120	1			
MUS	118	Jazz Band II	1		MUEN	120	1			
MUS	119	Aural Skills I	1		MUSI	Elective	1			
MUS	120	Aural Skills II	1		MUSI	108	1			
MUS	121	Music Theory I	3		MUSI	101	3			
MUS	122	Music Theory II	3		MUSI	102	3			
MUS	125	Jazz Ensemble I	1		MUEN	Elective	1			
MUS	126	Jazz Ensemble II	1		MUEN	Elective	1			
MUS	130	Class Voice	2		MUED	Elective	2			
MUS	131	Group Woodwind Instruments	2		MUED	205	2			

COURSE SUBSTITUTIONS FOR STUDENTS TRANSFERRING FROM OAKTON COLLEGE to NORTH CENTRAL COLLEGE

Based on the 2024-2025 Oakton College Catalog and the 2024-2025 North Central College Catalog

Oakton College Courses					NCC Courses			NCC General Education and Comments			
DEPT	NUM	COURSE TITLE	SEM CRED	IAI EQUIV	Dept	Number	Credit	GENERAL EDUCATION			COMMENT
MUS	132	Group Brass Instruments	2		MUED	206	2				
MUS	133	Group String Instruments	2		MUED	207	2				
MUS	134	Class Percussion I	1		MUED	Elective	1				
MUS	135	Class Percussion II	1		MUED	208	1				
MUS	138	Class Guitar	2		MUED	Elective	2				
MUS	141	Brass Ensemble I	1		MUEN	Elective	1				
MUS	142	Brass Ensemble II	1		MUEN	Elective	1				
MUS	143	Woodwind Ensemble I	1		MUEN	Elective	1				
MUS	144	Woodwind Ensemble II	1		MUEN	Elective	1				
MUS	145	Introduction to Music of the U.S.A.	3	F1 904	MUSI	Elective	3	HUM			
MUS	150	Applied Music Voice I	2		MUAL	100	2				
MUS	151	Applied Music Conducting I	2		MUAL	Elective	2				
MUS	152	Applied Music Flute I	2		MUAL	120	2				
MUS	153	Applied Music Clarinet I	2		MUAL	122	2				
MUS	154	Applied Music Oboe I	2		MUAL	121	2				
MUS	155	Applied Music Bassoon I	2		MUAL	123	2				
MUS	156	Applied Music Trumpet I	2		MUAL	141	2				
MUS	157	Applied Music Trombone I	2		MUAL	142	2				
MUS	158	Applied Music French Horn I	2		MUAL	140	2				
MUS	159	Applied Music Saxophone I	2		MUAL	124	2				
MUS	160	Applied Music Violin I	2		MUAL	180	2				
MUS	161	Applied Music Viola I	2		MUAL	181	2				
MUS	162	Applied Music Cello I	2		MUAL	182	2				
MUS	163	Applied Music Contrabass I	2		MUAL	183	2				
MUS	164	Applied Music Percussion I	2		MUAL	160	2				
MUS	165	Applied Music Piano I	2		MUAL	110	2				
MUS	166	Applied Music Bass Guitar I	2		MUAL	Elective	2				
MUS	167	Applied Music Guitar I	2		MUAL	185	2				
MUS	168	Applied Music Tuba I	2		MUAL	143	2				
MUS	169	Applied Music Jazz Guitar I	2		MUAL	Elective	2				
MUS	170	Applied Music Voice II	2		MUAL	100	2				
MUS	171	Applied Music Conducting II	2		MUAL	Elective	2				
MUS	172	Applied Music Flute II	2		MUAL	120	2				
MUS	173	Applied Music Clarinet II	2		MUAL	122	2				
MUS	174	Applied Music Oboe II	2		MUAL	121	2				
MUS	175	Applied Music Bassoon II	2		MUAL	123	2				
MUS	176	Applied Music Trumpet II	2		MUAL	141	2				
MUS	177	Applied Music Trombone II	2		MUAL	142	2				
MUS	178	Applied Music French Horn II	2		MUAL	140	2				
MUS	179	Applied Music Saxophone II	2		MUAL	124	2				
MUS	180	Applied Music Violin II	2		MUAL	180	2				
MUS	181	Applied Music Viola II	2		MUAL	181	2				
MUS	182	Applied Music Cello II	2		MUAL	182	2				
MUS	183	Applied Music Contrabass II	2		MUAL	183	2				
MUS	184	Applied Music Percussion II	2		MUAL	160	2				
MUS	185	Applied Music Piano II	2		MUAL	110	2				
MUS	186	Applied Music Bass Guitar II	2		MUAL	Elective	2				

COURSE SUBSTITUTIONS FOR STUDENTS TRANSFERRING FROM OAKTON COLLEGE to NORTH CENTRAL COLLEGE

Based on the 2024-2025 Oakton College Catalog and the 2024-2025 North Central College Catalog

Oakton College Courses					NCC Courses			NCC General Education and Comments			
DEPT	NUM	COURSE TITLE	SEM CRED	IAI EQUIV	Dept	Number	Credit	GENERAL EDUCATION			COMMENT
MUS	187	Applied Music Guitar II	2		MUAL	185	2				
MUS	188	Applied Music Tuba II	2		MUAL	143	2				
MUS	189	Applied Music Jazz Guitar II	2		MUAL	Elective	2				
MUS	205	Instrumental Ensemble III	1		MUEN	Elective	1				
MUS	206	Instrumental Ensemble IV	1		MUEN	Elective	1				
MUS	207	Class Piano III	2		MUED	Elective	2				
MUS	208	Class Piano IV	2		MUED	Elective	2				
MUS	209	Instrumental Ensemble Percussion III	1		MUEN	Elective	1				
MUS	210	Instrumental Ensemble Percussion IV	1		MUEN	Elective	1				
MUS	211	Choir III	1		MUEN	101	1				
MUS	212	Choir IV	1		MUEN	101	1				
MUS	215	Jazz Combo III	1		MUEN	121	1				
MUS	216	Jazz Combo IV	1		MUEN	121	1				
MUS	217	Jazz Band III	1		MUEN	102	1				
MUS	218	Jazz Band IV	1		MUEN	120	1				
MUS	219	Aural Skills III	1		MUSI	208	1				
MUS	220	Aural Skills IV	1		MUSI	Elective	1				
MUS	221	Music Theory III	3		MUSI	201	3				
MUS	222	Music Theory IV	3		MUSI	202	3				
MUS	225	Jazz Ensemble III	1		MUEN	Elective	1				
MUS	226	Jazz Ensemble IV	1		MUEN	Elective	1				
MUS	234	Class Percussion III	1		MUED	Elective	1				
MUS	235	Class Percussion IV	1		MUED	Elective	1				
MUS	236	Music Literature and History	3	F1 901	MUSI	258	3	HUM			
MUS	241	Brass Ensemble III	1		MUEN	Elective	1				
MUS	242	Brass Ensemble IV	1		MUEN	Elective	1				
MUS	243	Woodwind Ensemble III	1		MUEN	Elective	1				
MUS	244	Woodwind Ensemble IV	1		MUEN	Elective	1				
MUS	250	Applied Music Voice III	2		MUAL	100	2				
MUS	251	Applied Music Conducting III	2		MUAL	Elective	2				
MUS	252	Applied Music Flute III	2		MUAL	120	2				
MUS	253	Applied Music Clarinet III	2		MUAL	122	2				
MUS	254	Applied Music Oboe III	2		MUAL	121	2				
MUS	255	Applied Music Bassoon III	2		MUAL	123	2				
MUS	256	Applied Music Trumpet III	2		MUAL	141	2				
MUS	257	Applied Music Trombone III	2		MUAL	142	2				
MUS	258	Applied Music French Horn III	2		MUAL	140	2				
MUS	259	Applied Music Saxophone III	2		MUAL	124	2				
MUS	260	Applied Music Violin III	2		MUAL	180	2				
MUS	261	Applied Music Viola III	2		MUAL	181	2				
MUS	262	Applied Music Cello III	2		MUAL	182	2				
MUS	263	Applied Music Contrabass III	2		MUAL	183	2				
MUS	264	Applied Music Percussion III	2		MUAL	160	2				
MUS	265	Applied Music Piano III	2		MUAL	110	2				
MUS	266	Applied Music Bass Guitar III	2		MUAL	Elective	2				
MUS	267	Applied Music Guitar III	2		MUAL	185	2				
MUS	268	Applied Music Tuba III	2		MUAL	143	2				

COURSE SUBSTITUTIONS FOR STUDENTS TRANSFERRING FROM OAKTON COLLEGE to NORTH CENTRAL COLLEGE

Based on the 2024-2025 Oakton College Catalog and the 2024-2025 North Central College Catalog

Oakton College Courses				NCC Courses			NCC General Education and Comments			
DEPT	NUM	COURSE TITLE	SEM CRED	IAI EQUIV	Dept	Number	Credit	GENERAL EDUCATION		COMMENT
MUS	269	Applied Music Jazz Guitar III	2		MUAL	Elective	2			
MUS	270	Applied Music Voice IV	2		MUAL	100	2			
MUS	271	Applied Music Conducting IV	2		MUAL	Elective	2			
MUS	272	Applied Music Flute IV	2		MUAL	120	2			
MUS	273	Applied Music Clarinet IV	2		MUAL	122	2			
MUS	274	Applied Music Oboe IV	2		MUAL	121	2			
MUS	275	Applied Music Bassoon IV	2		MUAL	123	2			
MUS	276	Applied Music Trumpet IV	2		MUAL	141	2			
MUS	277	Applied Music Trombone IV	2		MUAL	142	2			
MUS	278	Applied Music French Horn IV	2		MUAL	140	2			
MUS	279	Applied Music Saxophone IV	2		MUAL	124	2			
MUS	280	Applied Music Violin IV	2		MUAL	180	2			
MUS	281	Applied Music Viola IV	2		MUAL	181	2			
MUS	282	Applied Music Cello IV	2		MUAL	182	2			
MUS	283	Applied Music Contrabass IV	2		MUAL	183	2			
MUS	284	Applied Music Percussion IV	2		MUAL	160	2			
MUS	285	Applied Music Piano iv	2		MUAL	110	2			
MUS	286	Applied Music Bass Guitar IV	2		MUAL	Elective	2			
MUS	287	Applied Music Guitar IV	2		MUAL	185	2			
MUS	288	Applied Music Tuba IV	2		MUAL	143	2			
MUS	289	Applied Music Jazz Guitar IV	2		MUAL	Elective	2			
NUR		Nursing			No	Credit	0			No credit transfers from this department
PAR		Paralegal Studies			No	Credit	0			No credit transfers from this department
PED	101	First Aid	2		HTSC	100	2	WEL		
PED	102	Living with Health	2		HTSC	Elective	2			
PED	109	Volleyball	1		KINE	Activity	1			A maximum 8 hours of KINE activity transfer
PED	110	Volleyball II	1		KINE	Activity	1			A maximum 8 hours of KINE activity transfer
PED	112	Soccer I	1		KINE	Activity	1			A maximum 8 hours of KINE activity transfer
PED	114	Soccer II	1		KINE	Activity	1			A maximum 8 hours of KINE activity transfer
PED	121	Basketball	1		KINE	Activity	1			A maximum 8 hours of KINE activity transfer
PED	122	Baseball I	1		KINE	Activity	1			A maximum 8 hours of KINE activity transfer
PED	124	Baseball II	1		KINE	Activity	1			A maximum 8 hours of KINE activity transfer
PED	128	Yoga I	1		KINE	Activity	1			A maximum 8 hours of KINE activity transfer
PED	129	Yoga II	1		KINE	Activity	1			A maximum 8 hours of KINE activity transfer
PED	130	Conditioning I	1		KINE	Activity	1			A maximum 8 hours of KINE activity transfer
PED	131	Physical Fitness I	1		KINE	Activity	1			A maximum 8 hours of KINE activity transfer
PED	132	Weight Training	1		KINE	Activity	1			A maximum 8 hours of KINE activity transfer
PED	141	Physical Fitness II	1		KINE	Activity	1			A maximum 8 hours of KINE activity transfer
PED	160	Conditioning II	1		KINE	Activity	1			A maximum 8 hours of KINE activity transfer
PED	185	Golf	1		KINE	Activity	1			A maximum 8 hours of KINE activity transfer
PED	190	Fitness Center	1		KINE	Activity	1			A maximum 8 hours of KINE activity transfer
PED	191	Prevention and Treatment of Athletic Injuries	3		KINE	Elective	3			
PED	230	Coaching Certification in Illinois	3		KINE	Elective	3			
PHL	105	Logic	3	H4 906	PHIL	230	3	HUM	QUA	
PHL	106	Ethics	3	H4 904	PHIL	110	3	HUM	ETH	
PHL	107	Business Ethics	3		PHIL	210	3	HUM	ETH	Only one of BUS 107 or PHL 107 transfers
PHL	110	Introduction to the Study of Religion	3		RELG	100	3	HUM	GLO	Only one of PHL 110 or PHL 205 transfers

COURSE SUBSTITUTIONS FOR STUDENTS TRANSFERRING FROM OAKTON COLLEGE to NORTH CENTRAL COLLEGE

Based on the 2024-2025 Oakton College Catalog and the 2024-2025 North Central College Catalog

Oakton College Courses					NCC Courses			NCC General Education and Comments				
DEPT	NUM	COURSE TITLE	SEM CRED	IAI EQUIV	Dept	Number	Credit	GENERAL EDUCATION			COMMENT	
PHL	130	Religious Diversity in America	3		RELG	240	3	HUM	ETH	POW		
PHL	170	Introduction to Philosophy of Science	3		PHIL	280	3	HUM				
PHL	180	Medical Ethics	3		PHIL	213	3	HUM	ETH			
PHL	204	Environmental Ethics	3		PHIL	225	3	HUM	ETH			
PHL	205	World Religions	3	H5 904N	RELG	100	3	HUM	GLO		Only one of PHL 110 or PHL 205 transfers	
PHL	215	Asian Philosophy	3	H4 903N	PHIL	Elective	3	HUM				
PHL	230	Ancient and Medieval Philosophy	3	H4 901	PHIL	260	3	HUM	ETH	GLO		
PHL	231	Modern and Contemporary Philosophy	3	H4 902	PHIL	Elective	3	HUM				
PHL	240	Philosophy of Religion	3	H4 905	PHIL	360	3	HUM	ETH		May not use to fulfill 300-level req in major/minor	
PHL	245	Foundational Religious Texts	3	H5 901	RELG	Elective	3	HUM				
PHL	290	Topics in Philosophy	1-4			Elective					Evaluated individually	
PHY	101	Applied Physics	4		No	Credit	0					
PHY	131	College Physics I	4	P1 900L	PHYS	131	4	SCI			Only one of PHY 131 or 221 transfer	
PHY	132	College Physics II	4		PHYS	132	4				Only one of PHY 132 or 222 transfer	
PHY	140	Fundamentals of Nanotechnology I	4		PHYS	Elective	4					
PHY	141	Fundamentals of Nanotechnology II	4		PHYS	Elective	4					
PHY	142	Nanotechnology Projects	4		PHYS	Elective	4					
PHY	143	Nanotechnology Internship	3			Elective					Evaluated individually	
PHY	221	General Physics I	5	P2 900L	PHYS	161	5	SCI			Only one of PHY 131 or 221 transfer	
PHY	222	General Physics II	5		PHYS	162	5				Only one of PHY 132 or 222 transfer	
PHY	223	Modern Physics	4		PHYS	263	4					
PHY	230	Optics	4		PHYS	Elective	4					
PHY	290	Topics in Physics	1-4			Elective					Evaluated individually	
POL	101	Beginning Polish I	4		LANG	101	4					
POL	102	Beginning Polish II	4		LANG	102	4					
POL	105	Conversational Polish	3		NCCC	Elective	3					
POL	201	Intermediate Polish I	4		LANG	Elective	4					
POL	202	Intermediate Polish II	4	H1 900	LANG	Elective	4	HUM				
PSC	101	American Government	3	S5 900	POLS	101	3	SOC	GLO			
PSC	103	Introduction to Political Science	3	S5 903	POLS	Elective	3	SOC				
PSC	104	Illinois Government	3		POLS	Elective	3	SOC				
PSC	111	Political Parties and American Politics	3		POLS	Elective	3	SOC				
PSC	201	Comparative Government	3	S5 905	POLS	221	3	SOC	GLO			
PSC	202	International Relations	3	S5 904N	POLS	102	3	SOC	GLO			
PSC	204	International Terrorism	3		POLS	Elective	3	SOC				
PSC	209	United States Foreign Policy	3		POLS	222	3	SOC	GLO			
PSC	216	Non-Western Comparative Government	3		POLS	Elective	3	SOC				
PSC	250	International Security: War and Peace	3		POLS	Elective	3	SOC				
PSC	290	Topics in Political Science	1-4			Elective					Evaluated individually	
PSY	101	Introduction to Psychology	3	S6 900	PSYC	100	3	SOC				
PSY	107	Applied Psychology: The Psych of Personal Growth	3		PSYC	120	3					
PSY	110	Multicultural Psychology	3		PSYC	Elective	3	SOC				
PSY	120	Human Development	3	S6 902	PSYC	210	3	SOC			Only 1 of ECE 102, PSY 120 or PSY 211 transfers	
PSY	122	Human Sexuality	3		PSYC	Elective	3					
PSY	125	Understanding Diversity	3		PSYC	Elective	3	SOC				
PSY	130	Introduction to Human Services	3		No	Credit	0					
PSY	201	Educational Psychology	3		PSYC	205	3				Only one of EDN 201 or PSY 201 transfers	

COURSE SUBSTITUTIONS FOR STUDENTS TRANSFERRING FROM OAKTON COLLEGE to NORTH CENTRAL COLLEGE

Based on the 2024-2025 Oakton College Catalog and the 2024-2025 North Central College Catalog

Oakton College Courses					NCC Courses			NCC General Education and Comments			
DEPT	NUM	COURSE TITLE	SEM CRED	IAI EQUIV	Dept	Number	Credit	GENERAL EDUCATION		COMMENT	
PSY	202	Social Psychology	3	S8 900	PSYC	240	3	SOC			
PSY	203	Psychology of Abnormal Behavior	3		PSYC	324	3			May not use to fulfill 300-level req in major/minor	
PSY	204	Adolescent Psychology	3		PSYC	220	3				
PSY	205	Adult Psychology	3	S6 905	PSYC	230	3	SOC			
PSY	206	Theories of Personality	3		PSYC	320	3			May not use to fulfill 300-level req in major/minor	
PSY	207	Psychology of Women and Gender	3		PSYC	Elective	3				
PSY	208	Biopsychology	3		NEUR	Elective	3				
PSY	211	Child Psychology	3	S6 903	PSYC	210	3	SOC		Only 1 of ECE 102, PSY 120 or PSY 211 transfers	
PSY	221	Industrial and Organizational Psychology	3		PSYC	270	3				
PSY	230	Behavioral Sciences Practicum I	4			Elective				Evaluated individually	
PSY	231	Behavioral Sciences Practicum II	2-4			Elective				Evaluated individually	
PSY	234	Family Systems and the Addictive Process	3		PSYC	Elective	3				
PSY	235	Psychology of Group Behavior	3		PSYC	Elective	3				
PSY	236	Crisis Intervention & Trauma Treatment	3		PSYC	Elective	3				
PSY	237	Psychopharmacology	3		NEUR	280	3	SOC	POW		
PSY	238	Substance Use and Related Disorders	3		PSYC	Elective	3				
PSY	239	Mental Health First Aid	1		No	Credit	0				
PSY	240	Introduction to Social Research	3		SOCI	200	3	QUA		Only one of PSY 240 or SSC 240 transfers	
PSY	290	Topics in Psychology	1-4			Elective				Evaluated individually	
PTA		Physical Therapist Assistant			No	Credit	0			No Credit Transfers from this department	
RUS	101	Beginning Russian I	4		LANG	101	4				
RUS	102	Beginning Russian II	4		LANG	102	4				
RUS	105	Conversational Russian	3		LANG	Elective	3				
RUS	201	Intermediate Russian I	4		LANG	Elective	4				
RUS	202	Intermediate Russian II	4	H1 900	LANG	Elective	4	HUM			
SOC	101	Introduction to Sociology	3	S7 900	SOCI	100	3	SOC	POW		
SOC	103	Social Problems	3	S7 901	PSYC	240	3	SOC			
SOC	104	Soc of Marriage and Family	3	S7 902	SOCI	342	3	SOC	GLO	May not use to fulfill 300-level req in major/minor	
SOC	210	Death and Dying	3		RELG	250	3	HUM	ETH		
SOC	220	Deviant Behavior	3		SOCI	Elective	3	SOC			
SOC	230	Sociology of Sex and Gender	3	S7 904D	SOCI	210	3	SOC	POW		
SOC	232	Sociology of Race and Ethnicity	3	S7 903	SOCI	211	3	SOC	POW		
SOC	233	Sociology of Aging and the Life Course	3		SOCI	Elective	3	SOC			
SOC	234	Sociology of Violence	3		SOCI	Elective	3	SOC			
SOC	290	Topics in Sociology	1-4			Elective				Evaluated individually	
SPE	103	Effective Speech	3	C2 900	COMM	110	3				
SPE	104	Oral Interpretation	3		COMM	Elective	3				
SPE	105	Training of the Speaking Voice	3		COMM	Elective	3				
SPE	115	Interpersonal Communications Across Cultures	3		COMM	200	3	SOC			
SPE	125	Basic Sign Language I	3		LANG	101	3				
SPE	126	Basic Sign Language II	3		LANG	102	3				
SPE	140	Professional Presentations	3		No	Credit	0				
SPE	209	Persuasive Speaking	3		COMM	Elective	3				
SPE	210	Debate	3		COMM	119	3			A maximum 6 hours of COM 119 transfers	
SPE	215	Group Discussion	3		COMM	214	3				
SPE	220	Competitive Speaking	3		COMM	119	3			A maximum 6 hours of COM 119 transfers	
SPE	290	Topics in Speech	1-4			Elective				Evaluated individually	

COURSE SUBSTITUTIONS FOR STUDENTS TRANSFERRING FROM OAKTON COLLEGE to NORTH CENTRAL COLLEGE

Based on the 2024-2025 Oakton College Catalog and the 2024-2025 North Central College Catalog

Oakton College Courses				NCC Courses			NCC General Education and Comments			
DEPT	NUM	COURSE TITLE	SEM CRED	IAI EQUIV	Dept	Number	Credit	GENERAL EDUCATION		COMMENT
SPN	101	Beginning Spanish I	4		SPAN	101	4			
SPN	102	Beginning Spanish II	4		SPAN	102	4			
SPN	105	Conversational Spanish	3		SPAN	Elective	3			Consult MCL department for placement
SPN	201	Intermediate Spanish I	4		SPAN	201	4	HUM	GLO	
SPN	202	Intermediate Spanish II	4	H1 900	SPAN	202	4	HUM	GLO	
SPN	205	Spanish Conversation and Composition	3	H1 900	SPAN	Elective	3	HUM		Consult MCL department for Placement
SPN	210	Introduction to Spanish Literature	3	H3 916	SPAN	Elective	3	HUM		Consult MCL department for Placement
SPT		Sterile Processing Technology			No	Credit	0			No credit transfers from this department
SSC	101	The Individual in Modern Society	3	S9 900	SOCI	Elective	3	SOC		
SSC	105	Introduction to Ethnic Studies	3	S7 903D	SOCI	Elective	3	SOC		
SSC	201	Introduction to Global Studies	3	S9 900	NCCC	Elective	3	SOC	GLO	
SSC	205	Latin American Civilization and Culture	3		HIST	175	3	SOC		
SSC	206	Contemporary China and Japan	3		EAST	Elective	3	SOC		
SSC	240	Introduction to Social Research	3		SOCI	200	3	QUA		Only one of PSY 240 or SSC 240 transfers
SSC	290	Topics In Social Science	1-4			Elective				Evaluated Individually
THE	103	Fundamentals of Acting	3		THEA	101	3	ART		
THE	115	Stage Lighting	3		THEA	242	3			
THE	130	Directing	3		THEA	330	3			May not use to fulfill 300-level req in major/minor
THE	135	Stagecraft I	3		THEA	141	2			
THE	136	Stagecraft II	3		THEA	Elective	2			
THE	140	Stage Movement	3		THEA	Elective	3			
THE	151	Theater Practicum I	1		THEA	115	1			A maximum 6 hours of THEA 115 transfer
THE	152	Theater Practicum II	1		THEA	115	1			A maximum 6 hours of THEA 115 transfer
THE	153	Theater Practicum III	1		THEA	115	1			A maximum 6 hours of THEA 115 transfer
THE	156	Acting for the Camera	3		THEA	365	3			May not use to fulfill 300-level req in major/minor
THE	202	Intermediate Acting	3		THEA	150	3			
THE	210	Auditioning for Theater	3		THEA	Elective	3			
THE	290	Topics in Theater	1-4			Elective				Evaluated individually
URD	101	Beginning Urdu I	4		LANG	101	4			
URD	102	Beginning Urdu II	4		LANG	102	4			