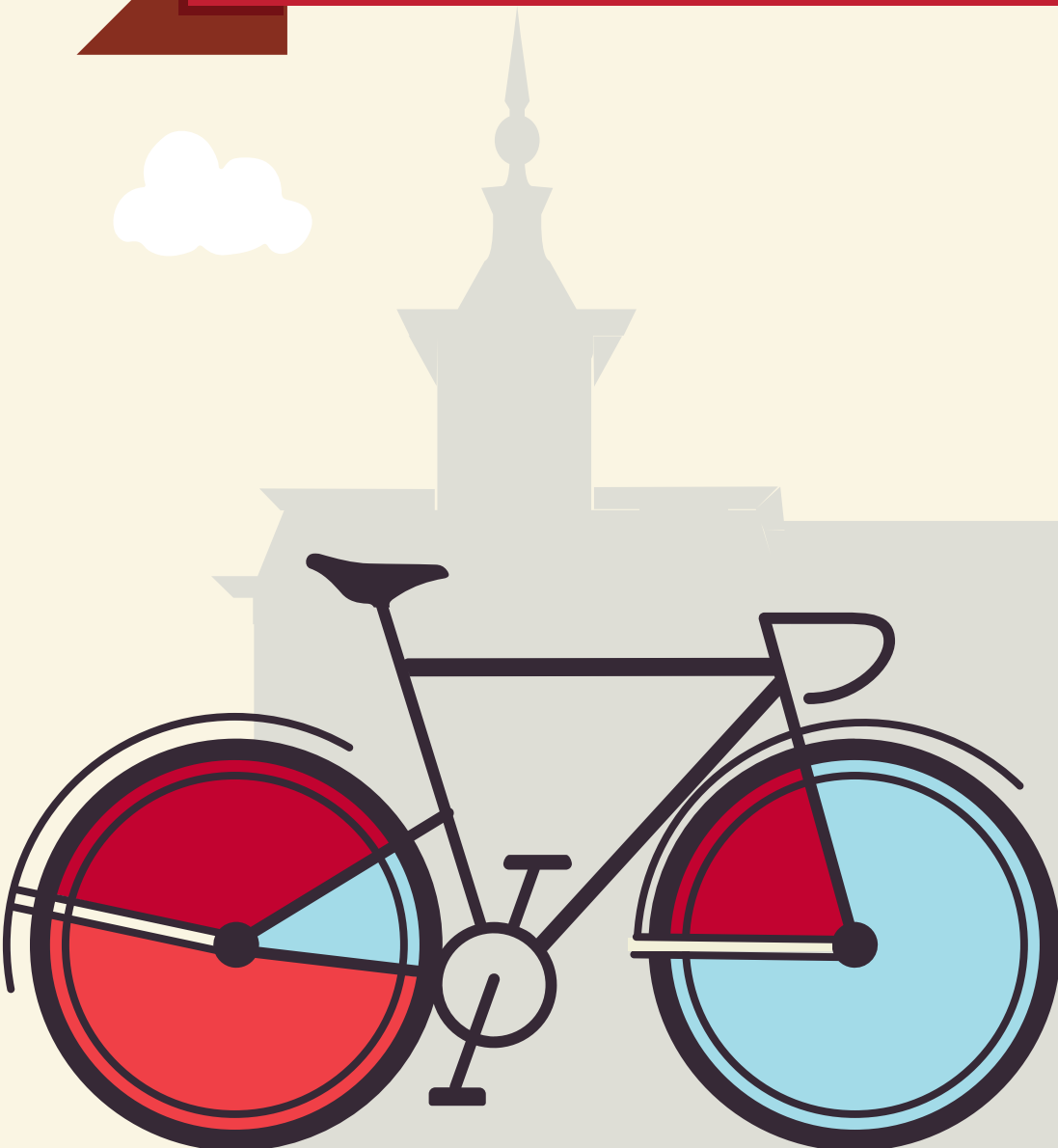


# YOUR GUIDE TO TRANSFERRING TO NORTH CENTRAL COLLEGE

**HIGHLAND COMMUNITY COLLEGE**





This guide is based on the 2024-2025 Highland Community College catalog, and the 2024-2025 North Central College catalog. North Central College reserves the right to alter any information listed in this guide, including the transferability of courses, without notice or obligation. For assistance with this guide, please call the Office of Admission at (630) 637-5800 or email at [admissions@noctrl.edu](mailto:admissions@noctrl.edu).

How to use this guide: This course substitution guide is designed to help you select courses at Highland Community College if you plan to transfer to North Central College. Working with your HCC advisor and NCC transfer admission counselor, refer to this guide to determine courses that meet North Central College requirements in our general education curriculum, academic major and minor requirements, and electives. Your NCC counselor can also provide a major planning worksheet. Listed below is a sample from this guide:

HCC Course Numbers, Titles, Credit					NCC Equivalent Course Numbers & Credit			NCC General Education Codes			Important Information about courses
DEPT	NUM	COURSE TITLE	CREDIT	IAI EQUIV	DEPT	NUM	CREDIT	GENERAL EDUCATION			COMMENTS
HIST	141	Western Civilization to 1648	3	S2 902	HIST	101	3	HUM			
HIST	143	U.S. History I	3	S2 900	HIST	Elective	3	SOC	GLO	POW	HIST 145 + HIST 236 = HIST 222

The Cardinal Directions general education curriculum at North Central College is as follows, along with the general education codes you will find in this guide. Please note the column to the far right which indicates which of these requirements may be waived (or required) based on the level of education you achieve prior to transferring. For additional details, please reference the NC catalog: <http://catalog.noctrl.edu/content.php?catoid=26&navoid=2582>.

## CARDINAL DIRECTIONS CURRICULUM MAP

Requirement	General Education Code	Credit	Comments
<b>Composition</b>	COMP	4 credits	Met with A.A. or A.S. degree
<b>Writing Intensive</b>	WRI	4 credits	Met with A.A. or A.S. degree
<b>Public Speaking</b>	COM	4 credits	Met with A.A. or A.S. degree
<b>Arts</b>	ART	4 credits	Met with A.A. or A.S. degree
<b>Humanities</b>	HUM	4 credits	Met with A.A. or A.S. degree
<b>Social Science</b>	SOC	4 credits	Met with A.A. or A.S. degree
<b>Science</b>	SCI	4 credits	Met with A.A. or A.S. degree
<b>Quantitative Analysis</b>	QUA	4 credits	Met with A.A. or A.S. degree
<b>Power Structures or Global Understanding</b>	POW or GLO	4 credits	Met with A.A. or A.S. degree GLO may be met with Study Abroad at NCC
<b>Ethical Dimensions</b>	ETH	4 credits	Met with A.A. or A.S. degree
<b>Well Being</b>	WEL	2 credits	Met with A.A. or A.S. degree
<b>Experiential (One of the following):</b>	-Community Engaged Learning -Study Away/Study Abroad -Student Research -CARD 400 – Senior Seminar: Liberal Arts and Problems of Today	2 credits	Met with A.A. or A.S. degree
<b>Career Readiness: Preparation and Experiential*</b>	CARD 250 – Career Preparation CARD 300 – Career Experiential	4 credits total	*Must be taken at NC

- \*An equivalent 3-credit transfer course may be used to fulfill a General Education requirement.
- One course may fulfill multiple requirements.
- College Transfer Credits are courses taken at a college or university after graduating high school and not earned through AP, IB, or CLEP.
- Only 64 semester hours (96 quarter hours) may transfer from a 2-yr college. Developmental courses (under 100-level) do not transfer.
- Requirements met through an eligible A.A. or A.S. degree may also be met with an eligible A.A.S. degree only if applied to the B.A.S. degree.
- Students with less than 28 transferable hours will need to complete CARD 110, a 1-credit transition course.

**COURSE SUBSTITUTIONS FOR STUDENTS TRANSFERRING FROM HIGHLAND COMMUNITY COLLEGE TO NORTH CENTRAL COLLEGE**

*Based on the 2023-2025 Highland Community College Catalog and the 2024-2025 North Central College Catalog*

<i>Highland Community College Courses</i>											<i>NCCC Courses</i>			<i>NCC General Education and Comments</i>			
DEPT	NUM	COURSE TITLE	SEM CRED	IAI EQUIV	Dept	Number	Credit	GENERAL EDUCATION			COMMENT						
ACCT	102	Fundamentals of Bookkeeping	3		No	Credit	0										
ACCT	105	Elements of Accounting	3		No	Credit	0										
ACCT	115	Computer Applications in Accounting	2		No	Credit	0										
ACCT	116	Introduction to Payroll Accounting	2		No	Credit	0										
ACCT	211	Individual Income Tax Accounting	3		ACCT	Elective	3										
ACCT	213	Financial Accounting	4		ACCT	201	4										
ACCT	214	Managerial Accounting	4		ACCT	202	4										
ACCT	215	Intermediate Accounting I	4		ACCT		0				Consult ACCT department						
ACCT	216	Intermediate Accounting II	4		ACCT		0				Consult ACCT department						
ACCT	218	Business Income Tax	3		ACCT	Elective	3										
ACCT	220	Advanced Quickbooks Accounting	2		No	Credit	0										
ACHR		Air Conditioning, Heating & Ventilation			No	Credit	0				No credit transfers from this department						
AGOC		Agricultural Occupations			No	Credit	0				No credit transfers from this department						
AGRI	184	Introduction to Agricultural Economics	4		ECON	Elective	3	SOC									
AGRI		All Other Agriculture Courses			No	Credit	0										
ART	110	Introduction to Art	3	F2 900	ARTD	Elective	3	ART									
ART	113	Drawing I	3		ARTD	120	3	ART									
ART	114	Drawing II	3		ARTD	220	3										
ART	115	Two-Dimensional Design	3		ARTD	107	3										
ART	116	Three-Dimensional Design	3		ARTD	160	3										
ART	117	Pottery I	3		ARTD	150	3	ART									
ART	118	Graphic Design I	3		ARTD	140	3				Only one of ART 118 or ART 202 transfer						
ART	119	Sculpture I	3		ARTD	260	3	ART									
ART	120	Life Drawing I	3		ARTD	225	3										
ART	201	Introduction to Photography I	3		ARTD	105	3										
ART	202	Digital Image Editing with Photoshop	3		INFS	Elective	3				Only one of ART 118 or ART 202 transfer						
ART	211	Painting I	3		ARTD	130	3	ART									
ART	212	Painting II	3		ARTD	230	3										
ART	213	Printmaking I	3		ARTD	210	3										
ART	214	Printmaking II	3		ARTD	310	3				May not use to fulfill 300-level req in major/minor						
ART	215	Art History I	3	F2 901	ARTH	100	3	ART	GLO								
ART	216	Art History II	3	F2 902	ARTH	102	3	ART	GLO								
ART	217	Pottery II	3		ARTD	250	3										
ART	218	Graphic Design II	3		ARTD	244	3										
ART	219	Modern Art	3	F2 902	ARTH	302	3	ART	WRI		May not use to fulfill 300-level req in major/minor						
ART	228	Graphic Design III	3		ARTD	Elective	3										
ART	238	Graphic Design IV	3			Elective	0				Evaluated individually						
ART	260	Web Design Studio	3		MEDI	Elective	3										
AUTB		Auto Body Repair			No	Credit	0				No credit transfers from this department						
AUTM		Automotive Mechanics			No	Credit	0				No credit transfers from this department						
BIOL	109	Plants and Society	3	L1 901	BIOL	Elective	3	SCI									
BIOL	110	Principles of Biology	4	L1 900L	BIOL	Elective	4	SCI									
BIOL	116	Introduction to Ecology	4	L1 905L	BIOL	Elective	4	SCI									
BIOL	117	Nutrition	3		BCHM	140	3	SCI									
BIOL	118	Local Flora	2		BIOL	Elective	2	SCI									
BIOL	119	Field Ornithology	2		BIOL	Elective	2	SCI									
BIOL	120	Foundations of Anatomy and Physiology	5	L1 904L	BIOL	Elective	5	SCI			No credit if completed after BIOL 213 or BIOL 214						
BIOL	124	Microbes and Society	3	L1 903	BIOL	Elective	3	SCI									
BIOL	145	Human Biology	3		BIOL	104	3	SCI									

**COURSE SUBSTITUTIONS FOR STUDENTS TRANSFERRING FROM HIGHLAND COMMUNITY COLLEGE TO NORTH CENTRAL COLLEGE**

*Based on the 2023-2025 Highland Community College Catalog and the 2024-2025 North Central College Catalog*

Highland Community College Courses				NCCC Courses			NCC General Education and Comments				
DEPT	NUM	COURSE TITLE	SEM CRED	IAI EQUIV	Dept	Number	Credit	GENERAL EDUCATION			COMMENT
BIOL	208	Biology I: Molecular and Cell Biology	4	L1 900L	BIOL	Elective	4	SCI			
BIOL	209	Biology II: Biodiversity, Evolution & Ecology	4	L1 910L	BIOL	Elective	4	SCI			
BIOL	211	General Microbiology	4		BIOL	145	4				
BIOL	213	Anatomy and Physiology I	4		BIOL	201	4				
BIOL	214	Anatomy and Physiology II	4		BIOL	202	4				
BMAC		Business Machines			No	Credit	0				No credit transfers from this department
BUSN	121	Introduction to Business	3		SBEN	100	3	SOC	ETH	GLO	
BUSN	124	Introduction to Small Business	3		BUSN	Elective	3				
BUSN	125	Mathematics of Business	3		No	Credit	0				
BUSN	130	Business Equipment	1		No	Credit	0				
BUSN	131	Money and Inventory Control	1		No	Credit	0				
BUSN	141	Business Communications	3		No	Credit	0				
BUSN	143	Fundamentals of Retailing	3		MKTG	Elective	3				
BUSN	221	Business Statistics	3		BUSN	265	3	QUA			Only one of BUSN 221 or MATH 177 transfer
BUSN	223	Business Law I	3		BUSN	205	3	ETH			Only one of BUSN 223 or BUSN 229 transfer
BUSN	224	Business Law II	3		BUSN	Elective	3				
BUSN	225	Personal Finance	3		SBEN	210	3	WEL			
BUSN	229	The Legal Environment of Business	3		BUSN	205	3	ETH			
BUSN	241	Principles of Personnel Management	3		MGMT	345	3				May not use to fulfill 300-level req in major/minor
BUSN	242	Fundamentals of Supervision	3		MGMT	Elective	3				
BUSN	243	Sales and Personal Communication	2		MKTG	Elective	2				
BUSN	244	Principles of Advertising	3		MKTG	Elective	3				
BUSN	246	Principles of Marketing	3		MKTG	300	3				May not use to fulfill 300-level req in major/minor
BUSN	249	Principles of Management	3		MGMT	305	3				May not use to fulfill 300-level req in major/minor
CHEM	120	Elementary General Chemistry	4	P1 902L	CHEM	Elective	4	SCI			
CHEM	123	General College Chemistry I	5	P1 902L	CHEM	121	5	SCI			
CHEM	124	General College Chemistry II	5		CHEM	122	5				
CHEM	220	Elementary Organic Chemistry	3		CHEM	Elective	3				
CHEM	221	Organic Chemistry I	4		CHEM	251	4				
CHEM	222	Organic Chemistry II	4		CHEM	252	4				
CHEM	225	Elementary Organic Chemistry Laboratory	1		CHEM	Elective	1				Credit only if CHEM 220 completed
CIS	101	Introduction to Criminal Justice	3		SOCI	340	3	GLO			May not use to fulfill 300-level req in major/minor
CIS	102	Introduction to Corrections	3		SOCI	Elective	3				
CIS	103	Introduction to Cyber Security	3		No	Credit	0				
CIS	201	Introduction to Criminology	3		SOCI	220	3	POW			Only one of CIS 201 or SOCI 275 transfer
CIS	202	Juvenile Delinquency	3		SOCI	221	3	POW			
CIS	203	Criminal Law	3		No	Credit	0				
CIS	204	Ethics in Criminal Justice	3		SOCI	Elective	3				
CIS	205	Criminal Investigation	3		No	Credit	0				
CIS	206	Policing in America	3		No	Credit	0				
CIS	208	Intro to Terrorism	3		SOCI	ELECTIVE	3				
CIS	210	Criminal Procedure	3		No	Credit	0				
CIS	212	Communication in Criminal Justice	3		No	Credit	0				
CIS	220	Probation and Parole	3		No	Credit	0				
COMM	101	Technical Communications	4		No	Credit	0				
COMM	214	Business and Technical Writing	3		No	Credit	0				
COSM		Cosmetology			No	Credit	0				No credit transfers from this department
DRAF		Drafting/CAD			No	Credit	0				No credit transfers from this department
ECE	121	Introduction to Early Childhood Education	3		NCCC	Elective	3				

**COURSE SUBSTITUTIONS FOR STUDENTS TRANSFERRING FROM HIGHLAND COMMUNITY COLLEGE TO NORTH CENTRAL COLLEGE**

*Based on the 2023-2025 Highland Community College Catalog and the 2024-2025 North Central College Catalog*

<i>Highland Community College Courses</i>											<i>NCCC Courses</i>			<i>NCC General Education and Comments</i>			
DEPT	NUM	COURSE TITLE	SEM CRED	IAI EQUIV	Dept	Number	Credit	GENERAL EDUCATION			COMMENT						
ECE	122	Child Growth and Development	3		PSYC	Elective	3										
ECE	123	Health, Safety Nutrition of Young Child	3		KINE	Elective	3										
ECE	124	Literature for Young Children	3		ENGL	122	3										
ECE	125	Assessment in Early Childhood Settings	2		EDUC	Elective	2										
ECE	126	Observation and Guidance of the Young Child	3		No	Credit	0										
ECE	127	Music and Movement for the Young Child	3		NCCC	Elective	3										
ECE	128	Practicum	2		No	Credit	0										
ECE	202	Curriculum in Early Childhood	3		No	Credit	0										
ECE	203	Home, School & Community Relations in EC	3		No	Credit	0										
ECE	204	Exceptional Child in Early Childhood Programs	3		EDUC	Elective	3										
ECE	205	Intro to Infant/Toddler Care & Education	3		No	Credit	0										
ECE	206	Creative Activities for the Young Child	3		NCCC	Elective	3										
ECE	207	Math and Science for the Young Child	3		NCCC	Elective	3										
ECE	208	Supervision & Admin of Child Care Programs	3		No	Credit	0										
ECE	209	Internship	3		No	Credit	0										
ECE	210	Legal & Fiscal Mgmt of Child Care Programs	3		No	Credit	0										
ECE	211	ECE Staff Management Practicum	3		No	Credit	0										
ECE	212	Early Childhood Assessment Seminar	3		No	Credit	0										
ECE	213	Inclusive Environments for Infants & Toddlers	3		No	Credit	0										
ECE	214	Family Child Care Environment	3		No	Credit	0										
ECE	215	Mentoring in Early Childhood	3		No	Credit	0										
ECON	111	Principles of Economics I (Macro)	3	S3 901	ECON	205	3	SOC									
ECON	112	Principles of Economics II (Micro)	3	S3 902	ECON	200	3	SOC									
EDUC	100	Education Observation I	1		EDUC	Elective	1				Max 30 clinical hours transfer						
EDUC	124	Diversity in Schools and Society	3		EDUC	Elective	3										
EDUC	125	Navigating/Teaching/Learning at HCC	3		No	Credit	0										
EDUC	200	Education Observation II	2		EDUC	Elective	1				Max 30 clinical hours transfer						
EDUC	221	The American Public School	3		EDUC	101	3	SOC	POW		Only one of EDUC 221 or EDUC 222 transfer						
EDUC	222	Education as an Agent for Change	3		EDUC	101	3	SOC	POW		Only one of EDUC 221 or EDUC 222 transfer						
EDUC	224	Introduction to Special Education	3		EDUC	Elective	3										
EDUC	225	Educational Technology	3		EDUC	235	3										
ELET		Electronics Technology			No	Credit	0				No credit transfers from this department						
ENGL	121	Rhetoric and Composition I	3	C1 900	ENGL	110	3	COMP									
ENGL	122	Rhetoric and Composition II	3	C1 901R	ENGL	110	3	COMP			or WRI if ENGL 121 is completed						
ENGL	220	Topics in Literature	3			Elective	0				Evaluated individually						
ENGL	221	Creative Writing	3		ENGL	210	3	ART									
ENGL	222	Modern Literature	3		ENGL	Elective	3	HUM									
ENGL	223	Introduction to Fiction	3	H3 901	ENGL	104	3	HUM									
ENGL	224	Introduction to Poetry	3	H3 903	ENGL	Elective	3	HUM									
ENGL	225	American Literature I	3	H3 914	ENGL	Elective	3	HUM									
ENGL	226	American Literature II	3	H3 915	ENGL	208	3	HUM									
ENGL	227	British Literature I	3	H3 912	ENGL	202	3	HUM									
ENGL	228	British Literature II	3	H3 913	ENGL	206	3	HUM									
ENGL	229	Introduction to Shakespeare	3	H3 905	ENGL	302	3	HUM									
ENGL	230	Women and Literature	3	H2.911D	ENGL	234	3	HUM	POW								
EQUI		Equine			No	Credit	0				No credit transfers from this department						
FREN	141	Elementary French I	4		FREN	101	4										
FREN	142	Elementary French II	4		FREN	102	4										
FREN	201	Intermediate French I	4		FREN	201	4										

**COURSE SUBSTITUTIONS FOR STUDENTS TRANSFERRING FROM HIGHLAND COMMUNITY COLLEGE TO NORTH CENTRAL COLLEGE**

*Based on the 2023-2025 Highland Community College Catalog and the 2024-2025 North Central College Catalog*

Highland Community College Courses											NCCC Courses			NCC General Education and Comments			
DEPT	NUM	COURSE TITLE	SEM CRED	IAI EQUIV	Dept	Number	Credit	GENERAL EDUCATION			COMMENT						
FREN	202	Intermediate French II	4		FREN	202	4	HUM									
FREN	211	Pract French Conversation, Reading & Writing I	3		FREN	Elective	3										
FREN	212	Pract French Conversation, Reading & Writing II	3		FREN	Elective	3										
GEOG	132	Regional Geography of the World	3	S4 900N	SOCI	Elective	3	SOC									
GEOG	233	Economic Geography	3	S4 903	ECON	Elective	3	SOC									
GEOL	126	Geology	4	P1 907L	SCIE	Elective	4	SCI									
GEOL	132	Natural Hazards and Disasters	3	P1 905	SCIE	Elective	3	SCI									
GEOL	205	Field Geology and Paleontology	2		SCIE	Elective	2	SCI									
GEOL	236	Historical Geology	4		SCIE	Elective	4	SCI									
GERM	151	Elementary German I	4		GRMN	101	4										
GERM	152	Elementary German II	4		GRMN	102	4										
GERM	201	Intermediate German I	4		GRMN	201	4										
GERM	202	Intermediate German II	4		GRMN	202	4	HUM									
GERM	211	Practice German Conversation, Reading & Writing I	3		GRMN	Elective	3										
GERM	212	Practice German Conversation, Reading & Writing II	3		GRMN	Elective	3										
HIST	141	Western Civilization to 1648	3	S2 902	HIST	101	3	HUM									
HIST	142	Western Civilization 1648 to Present	3	S2 903	HIST	102	3	HUM	GLO								
HIST	143	U.S. History I	3	S2 900	HIST	Elective	3	SOC	GLO	POW	HIST 143 + HIST 236 = HIST 222						
HIST	144	U.S. History II	3	S2 901	HIST	Elective	3	SOC	GLO	POW							
HIST	145	U.S. History III	3		HIST	Elective	3	SOC	GLO	POW							
HIST	230	20th Century World History	3		HIST	Elective	3										
HIST	231	The American Revolution and New Nation	3		HIST	Elective	3										
HIST	233	The American Civil War Era	3		HIST	Elective	3										
HIST	236	Illinois History	3		HIST	Elective	3	SOC	POW		HIST 143 + HIST 236 = HIST 222						
HIST	239	Women in American History	3		HIST	242	3										
HIST	241	The Contemporary World	4		HIST	Elective	4										
HIST	242	History of England, 1603 to the Present	3		HIST	Elective	3										
HIST	243	History of Africa	3	S2 920N	HIST	Elective	3	SOC									
HIST	244	History of Africa II	3	S2 920N	HIST	185	3	SOC									
HIST	245	History of the Middle East	3	S2 920N	HIST	180	3	SOC	ETH	GLO							
HIST	247	African-American History I	3		HIST	112	3										
HIST	299	Topics in History	3			Elective					Evaluated individually						
HLTH	101	Intro to Healthcare Delivery	2		HTSC	Elective	2										
HLTH	120	Healthcare Navigator	3		No	Credit	0										
HLTH	127	Community Healthcare	3		HTSC	230	3										
HOSP		Hospitality Management			No	Credit	0				No credit transfers from this department						
HUMA	104	Introduction to Humanities	3	HF 900	NCCC	Elective	3	HUM									
HUMA	106	Introduction to Humanities II	3		NCCC	Elective	3	HUM									
HUMA	110	Introduction to Critical Thinking	3	H4 906	PHIL	230	3	HUM			Only one of PHIL 283 or HUMA 110 transfer						
INFT	105	Basic Keyboarding I	2		No	Credit	0										
INFT	106	Basic Keyboarding II	1		No	Credit	0										
INFT	110	Introduction to Personal Computing	3		No	Credit	0										
INFT	115	Introduction to the World Wide Web	1		No	Credit	0										
INFT	122	Introduction to Windows	1		No	Credit	0										
INFT	131	Beginning Microsoft Word	1		No	Credit	0										
INFT	132	Intermediate Microsoft Word	1		No	Credit	0										
INFT	133	Advanced Microsoft Word	1		No	Credit	0										
INFT	135	PowerPoint	1		No	Credit	0										
INFT	137	Desktop Publishing	3		No	Credit	0										

**COURSE SUBSTITUTIONS FOR STUDENTS TRANSFERRING FROM HIGHLAND COMMUNITY COLLEGE TO NORTH CENTRAL COLLEGE**

*Based on the 2023-2025 Highland Community College Catalog and the 2024-2025 North Central College Catalog*

<i>Highland Community College Courses</i>											<i>NCCC Courses</i>			<i>NCC General Education and Comments</i>				
DEPT	NUM	COURSE TITLE	SEM CRED	IAI EQUIV	Dept	Number	Credit	GENERAL EDUCATION			COMMENT							
INFT	140	Beginning Excel	1		No	Credit	0											
INFT	142	Advanced Excel	1		No	Credit	1											
INFT	145	Beginning Access	1		No	Credit	0											
INFT	146	Intermediate Access	1		No	Credit	0											
INFT	147	Advanced Access	1		INFS	Elective	1				May not repeat							
INFT	150	Microsoft Office Integration	1		No	Credit	0											
INFT	160	Digital Pictures and Sound	1		MEDI	Elective	1											
INFT	180	Introduction to Information Systems	3		No	Credit	0											
INFT	182	Microcomputer Hardware	3		No	Credit	0											
INFT	190	Principles of Computer Science I	3		CSCE	160	3											
INFT	202	Web Programming	3		INFS	115	3											
INFT	260	Computer Animation and Interactivity	3		ARTD	280	3											
INFT	282	A+ Certification	3		No	Credit	0											
INFT	284	Network+ Certification	3		No	Credit	0											
INFT	286	Security+ Certification	3		No	Credit	0											
INFT	290	Prin of Computer Science II/Data Structures	3		CSCE	Elective	3											
INFT	295	Special Topics	4			Elective	0				Evaluated individually							
INST	100	Independent Study	4			Elective	0				Evaluated individually							
INST	200	Independent Study	4			Elective	0				Evaluated individually							
ITHC	101	Basic Medical Terminology I	1		HTSC	Elective	1				Plus ITHC 102 or 103 equates to HTSC 156							
ITHC	102	Basic Medical Terminology II	1		HTSC	Elective	1				Plus ITHC 101 or 103 equates to HTSC 156							
ITHC	103	Basic Medical Terminology III	1		HTSC	Elective	1				plus ITHC 101 or 102 equates to HTSC 156							
ITHC		All Other Information Technology Healthcare			No	Credit	0				No credit transfers from this department							
LIBS		Liberal Studies	1		No	Credit	0				No credit transfers from this department							
MATH	111	Technical Math I	3		No	Credit	0											
MATH	132	Applied Practical Math	4	M1 904	MATH	120	4	QUA										
MATH	134	Statistics	4	M1 902	PSYC	250	4	QUA										
MATH	140	Mathematics for Elementary Teachers I	4		MATH	107												
MATH	141	Mathematics for Elementary Teachers II	4	M1 903	MATH	108	4											
MATH	166	College Algebra	4		MATH	Elective	4				Only one of MATH 166+167 or MATH 170 transfer							
MATH	167	Plane Trigonometry	3		MATH	140	3				Only one of MATH 166+167 or MATH 170 transfer							
MATH	170	Precalculus	5		MATH	140	5				Only one of MATH 166+167 or MATH 170 transfer							
MATH	171	Finite Math	4	M1 906	MATH	130	4	QUA										
MATH	172	Calculus for Business and Social Science	3	M1 900B	MATH	Elective	3	QUA										
MATH	250	Analytic Geometry and Calculus I	5	M1 900 1	MATH	151	5	QUA										
MATH	255	Analytic Geometry and Calculus II	5	M1 902 2	MATH	152	5	QUA										
MATH	265	Differential Equations	3		MATH	315	3				May not use to fulfill 300-level req in major/minor							
MATH	269	Analytic Geometry and Calculus III	4	M1 900 3	MATH	253	4	QUA										
MATH	270	Linear Algebra	3		MATH	300	3				May not use to fulfill 300-level req in major/minor							
MCOM	110	Introduction to Mass Communication	3		COMM	185	3	SOC	GLO	POW								
MCOM	120	Introduction to Video Production - Field	3		MEDI	113	3				A maximum 6 hours of MEDI 113 transfer							
MCOM	125	Introduction to Video Production - Multi-Camera	3		MEDI	113	3				A maximum 6 hours of MEDI 113 transfer							
MCOM	130	Video Production	3		MEDI	222	3											
MCOM	131	Journalism Practicum	2		MEDI	152	2				A maximum 6 hours of MEDI 152 transfer							
MCOM	150	Introduction to Film	3		FILM	100	3	ART										
MCOM	160	Broadcasting Performance	3		MEDI	Elective	3											
MCOM	185	Introduction to Radio Production	3		MEDI	262	3											
MCOM	186	Radio Practicum	2		MEDI	117	2				A maximum 6 hours of MEDI 117 transfer							
MCOM	187	Radio Management	3		MEDI	Elective	3											

**COURSE SUBSTITUTIONS FOR STUDENTS TRANSFERRING FROM HIGHLAND COMMUNITY COLLEGE TO NORTH CENTRAL COLLEGE**

*Based on the 2023-2025 Highland Community College Catalog and the 2024-2025 North Central College Catalog*

<i>Highland Community College Courses</i>											<i>NCCC Courses</i>			<i>NCC General Education and Comments</i>			
DEPT	NUM	COURSE TITLE	SEM CRED	IAI EQUIV	Dept	Number	Credit	GENERAL EDUCATION			COMMENT						
MCOM	205	Film History and Appreciation	3		FILM	Elective	3	ART									
MCOM	220	Introduction to Public Relations	3		COMM	250	3										
MCOM	231	News Reporting	3		MEDI	225	3										
MCOM	232	News Editing	3		MEDI	250	3										
MCOM	240	Video Field Production II	3		MEDI	Elective	3										
MCOM	245	Multi-Camera Video Production II	3		MEDI	Elective	3										
MCOM	250	Motion Picture Production	3		MEDI	Elective	3										
MCOM	260	Advanced Video Production	3		MEDI	Elective	3										
MCOM	290	Mass Communication Internship	3			Elective						Evaluated individually					
MCOM	299	Mass Communication Portfolio	1		No	Credit	0										
MTEC		Mechanical Technology			No	Credit	0					No credit transfers from this department					
MUS	110	Applied Music - Voice	1		MUAL	100	1										
MUS	111	Applied Music - Piano	1		MUAL	110	1										
MUS	112	Applied Music - Guitar/Harp	1		MUAL	Elective	1										
MUS	113	Applied Music - Strings	1		MUAL	189	1										
MUS	114	Applied Music - Winds	1		MUAL	129	1										
MUS	115	Applied Music - Percussion	1		MUAL	160	1										
MUS	150	Fundamentals of Music	2		MUSI	Elective	2										
MUS	153	Introduction to Audio Production	3		No	Credit	0										
MUS	154	Aural Skills I	1		MUSI	Elective	1										
MUS	157	Class Guitar I	2		MUAL	185	2										
MUS	158	Aural Skills II	1		MUSI	108	1										
MUS	160	Musicianship for the Elementary Teacher	3		MUSI	Elective	3										
MUS	161	Theory I	3		MUSI	101	3										
MUS	162	Theory II	3		MUSI	102	3										
MUS	167	Class Voice I	2		MUAL	100	2										
MUS	169	Vocal Ensemble I - Royal Scots	1		MUEN	123	1										
MUS	170	Vocal Ensemble II - Royal Scots	1		MUEN	123	1										
MUS	174	Chamber Jazz Ensemble	1		MUEN	122	1										
MUS	175	Concert Choir	1		MUEN	101	1										
MUS	177	Class Piano I	2		MUAL	110	2										
MUS	178	Class Piano II	2		MUAL	110	2										
MUS	179	Concert Band	1		MUEN	113	1										
MUS	181	Orchestra	1		MUEN	Elective	1										
MUS	182	Large Jazz Ensemble	1		MUEN	120	1										
MUS	183	Chamber Singers	1		MUEN	104	1										
MUS	185	Jazz Improvisation I	2		MUSI	281	2										
MUS	210	Applied Music Major - Voice	2		MUAL	100	2										
MUS	211	Applied Music Major - Piano	2		MUAL	110	2										
MUS	212	Applied Music Major - Guitar/Harp	2		MUAL	Elective	2										
MUS	213	Applied Music Major - Strings	2		MUAL	189	2										
MUS	214	Applied Music Major - Wind Instruments	2		MUAL	129	2										
MUS	215	Applied Music Major - Percussion	2		MUAL	169	2										
MUS	253	Audio Production II	3		No	Credit	0										
MUS	254	Aural Skills III	1		MUSI	Elective	1										
MUS	258	Aural Skills IV	1		MUSI	Elective	1										
MUS	261	Theory III	3		MUSI	201	3										
MUS	262	Theory IV	3		MUSI	202	3										
MUS	267	Introduction to Music	3	F1 900	MUSI	150	3	ART									



**COURSE SUBSTITUTIONS FOR STUDENTS TRANSFERRING FROM HIGHLAND COMMUNITY COLLEGE TO NORTH CENTRAL COLLEGE**

*Based on the 2023-2025 Highland Community College Catalog and the 2024-2025 North Central College Catalog*

<i>Highland Community College Courses</i>											<i>NCCC Courses</i>			<i>NCC General Education and Comments</i>				
DEPT	NUM	COURSE TITLE	SEM CRED	IAI EQUIV	Dept	Number	Credit	GENERAL EDUCATION			COMMENT							
MUS	268	Introduction to Music of the U.S.A.	3	F1 904	MUSI	Elective	3	ART										
MUS	270	Fundamentals of Conducting	3		MUSI	Elective	3											
MUS	285	Jazz Improvisation II	2		MUSI	Elective	2											
NSCI	115	Human-Environmental Issues	3	P9 901	ENVI	Elective	3	SCI										
NSCI	132	Physical Geography	4	P1 909L	SCIE	Elective	4	SCI										
NSCI	133	Introduction to Astronomy with Lab	4	P1 906L	PHYS	110	4	SCI			Only one of NSCI 133 or NSCI 134 transfer							
NSCI	134	Introduction to Astronomy	3	P1 906	PHYS	110	3	SCI			Only one of NSCI 133 or NSCI 134 transfer							
NSCI	232	Fundamentals of Meteorology	3	P1 905	SCIE	Elective	3	SCI										
NURS		Nursing			No	Credit	0				No credit transfers from this department							
OCED		Occupational Education			No	Credit	0				No credit transfers from this department							
OFFT		Office Technology			No	Credit	0				No credit transfers from this department							
PHIL	180	Survey of World Religions	3	H5 904N	RELG	100	3	HUM	GLO									
PHIL	185	Introduction to Religion	3		RELG	100	3	HUM	GLO									
PHIL	281	Introduction to Philosophy	3	H4 900	PHIL	100	3	HUM	ETH									
PHIL	282	Ethics	3	H4 904	PHIL	110	3	HUM	ETH									
PHIL	283	Introduction to Logic	3	S5 903	PHIL	230	3	QUA			Only one of PHIL 283 or HUMA 110 transfer							
PHYD	111	Introduction to Physical Education	2		KINE	Elective	2											
PHYD	112	Health	2		KINE	Elective	2											
PHYD	113	Golf	1		KINE	Activity	1				A maximum 8 hours of KINE activity transfer							
PHYD	114	Outdoor-Indoor Activities	1		KINE	Activity	1				A maximum 8 hours of KINE activity transfer							
PHYD	115	Introduction to Recreation	3		KINE	Elective	3											
PHYD	116	Tae-Kwon-Do	1		KINE	Activity	1				A maximum 8 hours of KINE activity transfer							
PHYD	117	Beginning Swimming	1		KINE	Activity	1				A maximum 8 hours of KINE activity transfer							
PHYD	119	Beginning Skiing	1		KINE	Activity	1				A maximum 8 hours of KINE activity transfer							
PHYD	120	General Conditioning	1		KINE	Activity	1				A maximum 8 hours of KINE activity transfer							
PHYD	121	Physical Fitness I	2		KINE	Activity	2				A maximum 8 hours of KINE activity transfer							
PHYD	124	Theory of Football Coaching	2		KINE	Elective	2											
PHYD	125	Fitness/Jogging	1		KINE	Activity	1				A maximum 8 hours of KINE activity transfer							
PHYD	130	Body Conditioning/Running	1		KINE	Activity	1				A maximum 8 hours of KINE activity transfer							
PHYD	135	Games in Elementary Physical Education	3		KINE	Elective	3				A maximum 8 hours of KINE activity transfer							
PHYD	136	Folk Dance	1		KINE	Activity	1				A maximum 8 hours of KINE activity transfer							
PHYD	142	Intermediate Swimming	1		KINE	Activity	1				A maximum 8 hours of KINE activity transfer							
PHYD	146	Intermediate Tae-Kwon-Do	1		KINE	Activity	1				A maximum 8 hours of KINE activity transfer							
PHYD	149	Intermediate Skiing	1		KINE	Activity	1				A maximum 8 hours of KINE activity transfer							
PHYD	150	Backpacking	2		KINE	Activity	2				A maximum 8 hours of KINE activity transfer							
PHYD	210	Sport Appreciation	1		KINE	Elective	1											
PHYD	211	Recreational Leadership	3		KINE	Elective	3											
PHYD	212	First Aid	2		HTSC	100	2	WEL										
PHYD	213	Bowling	1		KINE	Activity	1				A maximum 8 hours of KINE activity transfer							
PHYD	215	Social Dancing	1		KINE	Activity	1				A maximum 8 hours of KINE activity transfer							
PHYD	216	Recreational Sports	1		KINE	Activity	1				A maximum 8 hours of KINE activity transfer							
PHYD	218	Human Sexuality	2		KINE	Elective	2											
PHYD	219	Drugs and Society	2		KINE	Elective	2											
PHYD	220	Team Sports	3		KINE	Activity	3				A maximum 8 hours of KINE activity transfer							
PHYD	221	Physical Fitness II	2		KINE	Activity	2				A maximum 8 hours of KINE activity transfer							
PHYD	222	Weight Training	1		KINE	Activity	1				A maximum 8 hours of KINE activity transfer							
PHYD	225	Theory of Baseball Coaching/Softball Coaching	2		KINE	Elective	2											
PHYD	226	Theory of Basketball Coaching	2		KINE	Elective	2											
PHYD	227	Sports Officiating	3		KINE	Elective	3											

**COURSE SUBSTITUTIONS FOR STUDENTS TRANSFERRING FROM HIGHLAND COMMUNITY COLLEGE TO NORTH CENTRAL COLLEGE**

*Based on the 2023-2025 Highland Community College Catalog and the 2024-2025 North Central College Catalog*

Highland Community College Courses				NCCC Courses			NCC General Education and Comments			
DEPT	NUM	COURSE TITLE	SEM CRED	IAI EQUIV	Dept	Number	Credit	GENERAL EDUCATION		COMMENT
PHYD	228	Theory of Track and Field Coaching	2		KINE	Elective	2			
PHYD	234	Handball and Racquetball	1		KINE	Activity	1			A maximum 8 hours of KINE activity transfer
PHYD	236	Modern Dance	1		THEA	Elective	1			
PHYD	239	Body Mechanics	1		KINE	Elective	1			
PHYD	240	Camp Counseling	3		No	Credit	0			
PHYD	242	Program Planning and Organization	3		KINE	Elective	3			
PHYD	244	Lifeguarding Training	1		KINE	Elective	1			
PHYD	245	Water Safety Instructor	3		KINE	Elective	3			
PHYS	120	Introduction to Engineering	2		ENGR	100	2			
PHYS	140	Survey of Physics	4	P1 900L	PHYS	Elective	4	SCI		
PHYS	141	Introductory Physics I	4	P1 900L	PHYS	131	4	SCI		Only one of PHYS 141 or 143 transfer
PHYS	142	Introductory Physics II	4		PHYS	132	4			Only one of PHYS 142 or 144 transfer
PHYS	143	General Physics I	4	P2 900L	PHYS	161	4	SCI		Only one of PHYS 141 or 143 transfer
PHYS	144	General Physics II	4		PHYS	162	4			Only one of PHYS 142 or 144 transfer
PHYS	145	General Physics III	3		PHYS	Elective	4			
PHYS	220	Mechanics: Statics and Dynamics	5		PHYS	Elective	5			
PHYS	221	Mechanics I (Statics)	3		PHYS	211	3			
PHYS	222	Mechanics II (Dynamics)	3		PHYS	Elective	3			
PHYS	246	Introduction to Circuit Analysis	4		ELEC	250	4			
POL	151	Introduction to Political Science	3	S5 903	POLS	Elective	3	SOC		
POL	152	American Government and Politics	3	S5 900	POLS	101	3	SOC	POW	
POL	153	State and Local Government	3	S5 902	POLS	Elective	3	SOC	POW	
POL	253	International Relations	3	S5 904N	POLS	102	3	SOC	GLO	
POL	254	Introduction to Comparative Government	3	S5 905	POLS	221	3	SOC	GLO	
POL	255	American Parties and Pressure Groups	3		POLS	Elective	3	SOC		
POL	257	Understanding the Constitution	3		POLS	Elective	3	SOC		
PSY	160	Psychology of Human Relations	2		No	Credit	0			
PSY	161	Introduction to Psychology	3	S6 900	PSYC	100	3	SOC		
PSY	162	Child Psychology	3	S6 903	PSYC	210	3	SOC		
PSY	163	Practical Psychology	2		No	Credit	0			
PSY	228	Introduction to Counseling	3		PSYC	Elective	3			
PSY	230	Counseling/Interview Techniques	3		No	Credit	0			
PSY	260	Abnormal Psychology	3		PSYC	324	3			May not use to fulfill 300-level req in major/minor
PSY	261	Educational Psychology	3		PSYC	205	3			
PSY	262	Human Growth and Development	3	S6 902	PSYC	Elective	3	SOC		
PSY	264	Social Psychology	3	S8 900	PSYC	240	3	SOC		
PSY	268	Introduction to Personality	3		PSYC	320	3			May not use to fulfill 300-level req in major/minor
RDG		Reading			No	Credit	0			No credit transfers from this department
SOCI	171	Introduction to the Principles of Sociology	3	S7 900	SOCI	100	3	SOC	POW	
SOCI	174	Death and Dying	3		RELG	250	3	HUM	ETH	
SOCI	177	Introduction to Anthropology	3	S1 900N	ANTH	Elective	3	SOC		
SOCI	234	Gender and Society	3	S7 904D	GSST	100	3	SOC	POW	
SOCI	271	Social Problems	3	S7 901	SOCI	Elective	3	SOC		
SOCI	272	Introduction to Social Welfare Content	3		No	Credit	0			
SOCI	273	Social Service Field Experience	3		No	Credit	0			
SOCI	274	The Family	3	S7 902	SOCI	342	3	GLO		May not use to fulfill 300-level req in major/minor
SOCI	276	Racism & Diversity in Contemporary Society	3	S7 903D	SOCI	211	3	SOC	POW	
SPAN	155	Elementary Spanish I	4		SPAN	101	4			
SPAN	156	Elementary Spanish II	4		SPAN	102	4			

**COURSE SUBSTITUTIONS FOR STUDENTS TRANSFERRING FROM HIGHLAND COMMUNITY COLLEGE TO NORTH CENTRAL COLLEGE**

*Based on the 2023-2025 Highland Community College Catalog and the 2024-2025 North Central College Catalog*

<i>Highland Community College Courses</i>				<i>NCCC Courses</i>			<i>NCC General Education and Comments</i>			
DEPT	NUM	COURSE TITLE	SEM CRED	IAI EQUIV	Dept	Number	Credit	GENERAL EDUCATION		COMMENT
SPAN	201	Intermediate Spanish I	4		SPAN	201	4			
SPAN	202	Intermediate Spanish II	4		SPAN	202	4	HUM		
SPAN	257	Advanced Spanish Composition & Conversation	3		SPAN	Elective	3	HUM		Consult MCL department for placement
SPCH	189	Introduction to Communication Studies	3		COMM	Elective	3			
SPCH	191	Fundamentals of Speech Communication	3	C2 900	COMM	Elective	3			
SPCH	192	Introduction to Public Speaking	3	C2 900	COMM	110	3			
SPCH	199	Speech Activities I	1			Elective	0			Evaluated individually
SPCH	220	Interpersonal Communication	3		COMM	200	3	SOC		
SPCH	292	Contemporary Argumentation	3		COMM	285	3			
SPCH	293	Small Group Communication	3		COMM	214	3			
SPCH	294	Leadership Development	3		LEAD	Elective	3			
SPCH	295	Community Leadership Development	1-3		No	Credit	0			
SPCH	296	Intercultural Communication	3		COMM	317	3	SOC	GLO	May not use to fulfill 300-level req in major/minor
SPTP		Special Topics				Elective	0			Evaluated individually
THEA	104	Cultural Diversity in Performance	3		THEA	Elective	3			
THEA	180	Stagecraft I	3		THEA	141	3			May not be repeated
THEA	181	Stagecraft II	3		THEA	Elective	3			May not be repeated
THEA	183	Principles of Acting I	3		THEA	101	3	ART		
THEA	184	Principles of Acting II	3		THEA	150	3			
THEA	185	Principles of Acting III	3		THEA	250	3			
THEA	186	Stage Make-Up	2		THEA	144	2			
THEA	187	Intro to Tech Theatre I	3		THEA	141	3			or Elective if THEA 180 completed
THEA	188	Summer Theatre Workshop	3		THEA	Elective	3			
THEA	196	Introduction to Theatre	3	F1 907	THEA	102	3	ART		
THEA	197	Applied Theatre I	1		THEA	115	1			A maximum 6 hours of THEA 115 transfer
THEA	198	Applied Theater II	2		THEA	115	2			A maximum 6 hours of THEA 115 transfer
THEA	201	Play Analysis for Production	3		THEA	Elective	3	ART		
THEA	283	Theatre Practicum	5		THEA	115	5			A maximum 6 hours of THEA 115 transfer
THEA	286	Theatre Practice: Stage Lighting	3		THEA	242	3			
THEA	287	Beginning Directing	3		THEA	330	3			May not use to fulfill 300-level req in major/minor
THEA	296	Introduction to Technical Theatre II	3		THEA	Elective	3			
WELD		Welding			No	Credit	0			No credit transfers from this department