

HEY FUTURE CARDINAL!

Welcome to

**NORTH CENTRAL  
COLLEGE**



**NORTH CENTRAL  
COLLEGE 1861**



# EVENT RESOURCES & SURVEY

**FEBRUARY 17 VISIT DAY AGENDA**  
WENTZ CONCERT HALL

- 10:00 A.M. CHECK-IN BEGINS\***  
UPDATE: Attend Beyond the Classroom presentation at 10:20 am in Wentz Concert Hall to learn about our Honors Program, Education Abroad program, internships, and more enriching academic opportunities.
- 10:30 A.M. WELCOME PRESENTATION**
- 11:00 A.M. PANEL OF PROFESSORS**
- 11:30 A.M. WALKING CAMPUS TOUR\***
- 12:30 P.M. YOU PICK!\***
- 1:30 - 4:30 P.M. FINE ARTS AUDITIONS**

**\*SCAVENGER HUNT**

- BEYOND THE CLASSROOM PRESENTATION
- TAKE A PHOTO WITH CHIPPY THE CARDINAL OUR MASCOT
- TAKE A PHOTO ON TOUR
- LUNCH AT KAUFMAN DINING HALL
- STUDENT LIFE FAIR
- TAKE SELFIE AT OUR PHOTO BACKDROP
- INTRODUCE YOURSELF TO AN ADMISSION COUNSELOR
- TAKE EVENT SURVEY

Complete 4 scavenger hunt items and show Admission staff at the check-in counter before you leave to pick up more North Central swag!



**12:30-1:30 P.M.**  
*You Pick!*

- A. KAUFMAN DINING HALL**  
221 S. Brainerd St.  
Pick up your non-refundatory meal pass from the check-in counter after the campus tour!
- B. TROLLEY TOUR**  
Fine Arts Center  
Take a tour of the surrounding downtown Naperville area. Trolley departs from main entrance every 15 minutes. Highly recommended if this is your first time visiting Naperville!
- C. CAMPUS STORE** (OPEN UNTIL 4:00 P.M.)  
100 E. Jefferson Ave.  
Shop at the Campus Store and enjoy 20% off your purchase! Just show them your swag!
- D. STUDENT LIFE FAIR\***  
Wentz Concert Hall Lobby
- E. DOWNTOWN NAPERVILLE**  
Explore more than 100 restaurants and shops in beautiful downtown Naperville within walking distance from campus.
- F. HEALTHCARE DONE DIFFERENTLY**  
Hudson Theatre  
Talk to students and professors from our other Healthcare Program!
- G. TECHNICAL THEATRE DEMO**  
Hudson Theatre

Access event presentations and more

Complete our scavenger hunt to pick up more North Central swag before you leave!



# YOU PICK TIMES!

**TROLLEY TOUR | 12:35 - 1:35 P.M.**

**STUDENT LIFE FAIR | 12:30 - 1:30 P.M.**

**HEALTHCARE DONE DIFFERENTLY | 12:30 - 1:30 P.M.**

**TECHNICAL THEATRE DEMO | 12:30 - 1:30 P.M.**

**CAMPUS STORE | CLOSES AT 4:00 P.M.**

**KAUFMAN DINING HALL | CLOSES AT 1:30 P.M.**

**DOWNTOWN NAPERVILLE | VARIES**

More than

2,900

STUDENTS

CALL NORTH CENTRAL HOME



**FREE COLLEGE\***

**DEBT-FREE. STRESS-FREE. TUITION-FREE.**



**NORTH CENTRAL COLLEGE**

**CARDINAL  
PLEDGE**

The Cardinal Pledge program covers **100% of tuition** and fees for qualified first-year students from Illinois, with the goal of expanding access to a North Central education and taking the guesswork out of the financial aid process.

**It's #NotTooGoodToBeTrue!**



**FIND OUT IF  
YOU QUALIFY**



# IT'S NOT TOO GOOD TO BE TRUE!

- 35% of new students will qualify**
- Applying is easy**
- Open to both resident and commuter students**



**FIND OUT IF  
YOU QUALIFY**







36%

of Cardinals are  
**FIRST-GENERATION  
COLLEGE STUDENTS**



**Naperville Park District  
is one of the largest in  
Illinois with \_\_\_\_\_ parks.**

- (A) 40**
- (B) 212**
- (C) 93**
- (D) 138**



Naperville Park District  
is one of the largest in  
Illinois with \_\_\_\_\_ parks.

- (A) 40
- (B) 212
- (C) 93
- (D) 138**





**WE INVITE YOU!**

**PLEASE SIT IN THE ROW THE MATCHES YOUR  
ACADEMIC INTEREST BEST**



**SEE SIGNS ON ROWS**



**STEM & HEALTH SCIENCES**

*(Occupational Therapy, Neuroscience, Environmental Studies, etc.)*



**ARTS, HUMANITIES, AND SOCIAL SCIENCES**

*(Shimer Great Books, Psychology, World Languages, etc.)*



**EDUCATION**

*(Elementary, Secondary, Special, etc.)*



**BUSINESS**

*(Management, Marketing, Accounting, etc.)*

Campus is located  
**STEPS FROM  
DOWNTOWN NAPERVILLE:**

Home to 150+ restaurants and shops

Easy access to the Naperville Riverwalk

Named among “Safest College Towns”  
and “Best Cities to Live in America”





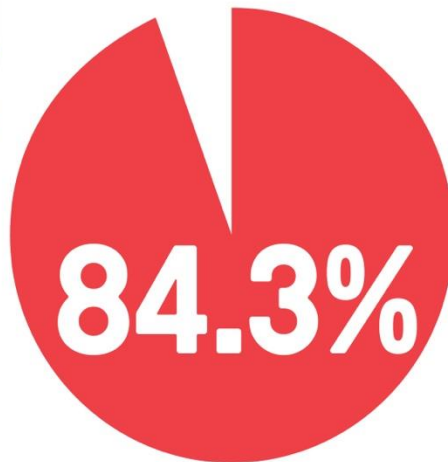
ASK US ABOUT

# AVAILABLE SCHOLARSHIPS

- Academic Merit
- Fine & Performing Arts
- Department/Major Specific
- United Methodist and Religious Vocations
- Future Engineers and Teachers
- Alumni Referral

**ACADEMIC MERIT SCHOLARSHIP**  
Starts at **\$25,500** annually

**ALUMNI REFERRAL SCHOLARSHIP**  
**\$1,000** annually



of graduates  
are either



**EMPLOYED** or **ATTENDING**  
**GRADUATE SCHOOL**

within 6 months of graduation



# EVENT RESOURCES & SURVEY

**FEBRUARY 17 VISIT DAY AGENDA**  
WENTZ CONCERT HALL

- 10:00 A.M. CHECK-IN BEGINS\***  
UPDATE: Attend Beyond the Classroom presentation at 10:20 am in Wentz Concert Hall to learn about our Honors Program, Education Abroad program, internships, and more enriching academic opportunities.
- 10:30 A.M. WELCOME PRESENTATION**
- 11:00 A.M. PANEL OF PROFESSORS**
- 11:30 A.M. WALKING CAMPUS TOUR\***
- 12:30 P.M. YOU PICK!\***
- 1:30 - 4:30 P.M. FINE ARTS AUDITIONS**

**\*SCAVENGER HUNT**

- BEYOND THE CLASSROOM PRESENTATION
- TAKE A PHOTO WITH CHIPPY THE CARDINAL OUR MASCOT
- TAKE A PHOTO ON TOUR
- LUNCH AT KAUFMAN DINING HALL
- STUDENT LIFE FAIR
- TAKE SELFIE AT OUR PHOTO BACKDROP
- INTRODUCE YOURSELF TO AN ADMISSION COUNSELOR
- TAKE EVENT SURVEY

Complete 4 scavenger hunt items and show Admission staff at the check-in counter before you leave to pick up more North Central swag!



**12:30-1:30 P.M.**  
*You PICK!*

- A. KAUFMAN DINING HALL**  
221 S. Brainerd St.  
Pick up your non-refundatory meal pass from the check-in counter after the campus tour!
- B. TROLLEY TOUR**  
Fine Arts Center  
Take a tour of the surrounding downtown Naperville area. Trolleys depart from main entrance every 15 minutes. Highly recommended if this is your first time visiting Naperville!
- C. CAMPUS STORE** (OPEN UNTIL 4:00 P.M.)  
100 E. Jefferson Ave.  
Shop at the Campus Store and enjoy 20% off your purchase! Just show them your swag!
- D. STUDENT LIFE FAIR\***  
Wentz Concert Hall Lobby
- E. DOWNTOWN NAPERVILLE**  
Explore more than 100 restaurants and shops in beautiful downtown Naperville within walking distance from campus.
- F. HEALTHCARE DONE DIFFERENTLY**  
Hudson Theatre  
Talk to students and professors from our other Healthcare Program!
- G. TECHNICAL THEATRE DEMO**  
Hudson Theatre

Access event presentations and more

Complete our scavenger hunt to pick up more North Central swag before you leave!

# YOU PICK TIMES!

**TROLLEY TOUR | 12:35 - 1:35 P.M.**

**STUDENT LIFE FAIR | 12:30 - 1:30 P.M.**

**HEALTHCARE DONE DIFFERENTLY | 12:30 - 1:30 P.M.**

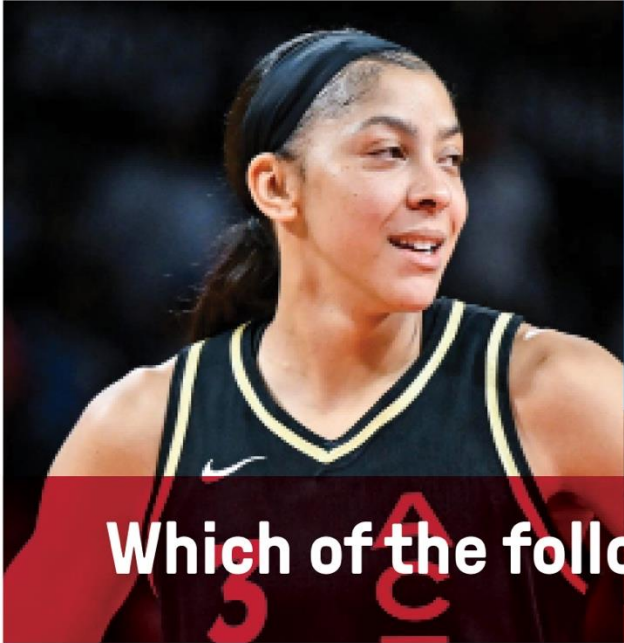
**TECHNICAL THEATRE DEMO | 12:30 - 1:30 P.M.**

**CAMPUS STORE | CLOSES AT 4:00 P.M.**

**KAUFMAN DINING HALL | CLOSES AT 1:30 P.M.**

**DOWNTOWN NAPERVILLE | VARIES**





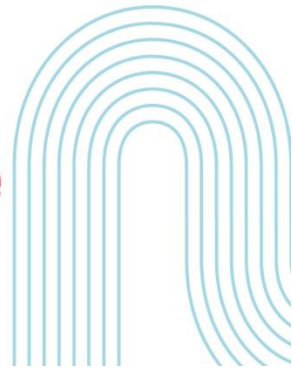
Which of the following celebrities are from Naperville?

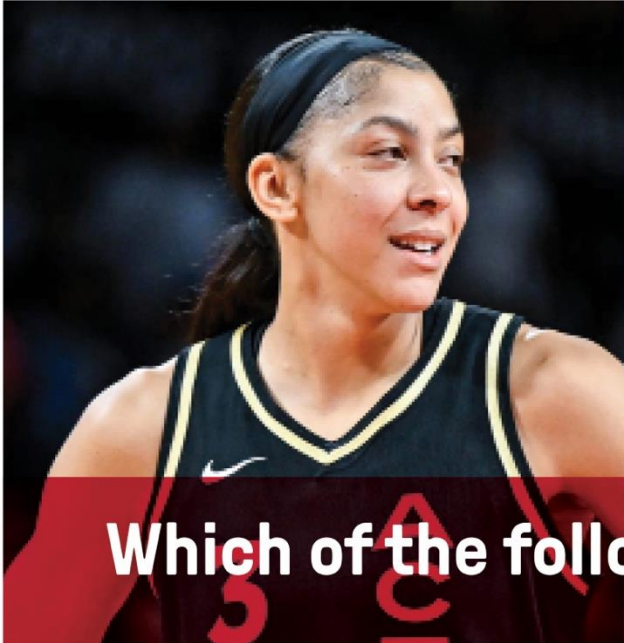
**A Candace Parker**  
(former WNBA player)

**C Emily Giffin**  
(author)

**B Bob Odenkirk**  
(former SNL and Breaking  
Bad actor)

**D All of the above**





Which of the following celebrities are from Naperville?

**A Candace Parker**  
(former WNBA player)

**C Emily Giffin**  
(author)

**B Bob Odenkirk**  
(former SNL and Breaking  
Bad actor)

**D All of the above**





**WE INVITE YOU!**

**PLEASE SIT IN THE ROW THE MATCHES YOUR  
ACADEMIC INTEREST BEST**



**SEE SIGNS ON ROWS**



**STEM & HEALTH SCIENCES**

*(Occupational Therapy, Neuroscience, Environmental Studies, etc.)*



**ARTS, HUMANITIES, AND SOCIAL SCIENCES**

*(Shimer Great Books, Psychology, World Languages, etc.)*



**EDUCATION**

*(Elementary, Secondary, Special, etc.)*



**BUSINESS**

*(Management, Marketing, Accounting, etc.)*



*NEW MAJOR SPOTLIGHT*  
**CRIMINOLOGY**



**In the classroom,  
you will:**

- Explore the causes of criminal behavior
- Examine the evolution and impact of our justice system
- Assess the structures and functions of discipline

**Beyond the classroom, you  
can pursue careers in:**

- Social Services
- Courts
- Policing
- Institutional and Community Corrections
- Juvenile Justice
- Intelligence
- Legislative and Law Offices





*NEW MAJOR SPOTLIGHT*

# **NUTRITION SCIENCE**



## **In the classroom, you will:**

- Practice nutrition counseling
- Develop health promotion campaigns
- Explore sustainable food/gardening practices

## **Beyond the classroom, you can pursue careers in:**

- Registered Dietitian Nutritionist (RDN)
- Nutrition and Dietitian Technician, Registered (NDTR)
- Food Service Management
- Wellness and Health Promotion



*NEW MAJOR SPOTLIGHT*  
**SPECIAL EDUCATION**



**In the classroom, you will:**

- Examine the history of disability and Special Education
- Review the legal requirements related to the protocols and provisions implemented through the IEP
- Apply practices to remove learning and societal barriers that diverse populations of exceptional learners face
- Improve learner-centered outcomes

**Beyond the classroom, you gain field experience in:**

- Elementary School
- Middle/High School
- Transition Services



**FREE COLLEGE\***

**DEBT-FREE. STRESS-FREE. TUITION-FREE.**



**NORTH CENTRAL COLLEGE**

**CARDINAL  
PLEDGE**

The Cardinal Pledge program covers **100% of tuition** and fees for qualified first-year students from Illinois, with the goal of expanding access to a North Central education and taking the guesswork out of the financial aid process.

**It's #NotTooGoodToBeTrue!**



**FIND OUT IF  
YOU QUALIFY**





# IT'S NOT TOO GOOD TO BE TRUE!

- 35% of new students will qualify**
- Applying is easy**
- Open to both resident and commuter students**



**FIND OUT IF  
YOU QUALIFY**



SHIMER GREAT BOOKS SCHOOL

Great books *BUILDING*

**GREAT MINDS.**

## Program Focuses:

- Humanities
- Liberal Studies
- Natural Sciences
- Social Sciences



THE NAPERVILLE PUBLIC  
LIBRARY HAS RANKED #1 IN THE  
U.S. FOR THE PAST 10 YEARS.

TRUE *OR*  
FALSE





**THE NAPERVILLE PUBLIC  
LIBRARY HAS RANKED #1 IN THE  
U.S. FOR THE PAST 10 YEARS.**

**TRUE**



**North Central College students  
can get a free library card!**



**WE INVITE YOU!**

**PLEASE SIT IN THE ROW THE MATCHES YOUR  
ACADEMIC INTEREST BEST**



**SEE SIGNS ON ROWS**



**STEM & HEALTH SCIENCES**

*(Occupational Therapy, Neuroscience, Environmental Studies, etc.)*



**ARTS, HUMANITIES, AND SOCIAL SCIENCES**

*(Shimer Great Books, Psychology, World Languages, etc.)*



**EDUCATION**

*(Elementary, Secondary, Special, etc.)*



**BUSINESS**

*(Management, Marketing, Accounting, etc.)*

# UNDERGRADUATE TO GRADUATE Pathway Programs

Pathways and support  
for every stage of  
your career.

*Undergraduate programs with pathways to graduate degrees.  
Space is limited, competitive and requires a separate application  
into graduate program.*

**Athletic Training**  
(BS to MAT)

**Occupational Therapy**  
(BS to MOT)

**Physical Therapy**  
(BS to DPT)

**Physician Assistant Studies**  
(BS to MPAS)



# GRADUATE PROGRAMS

Grow your earning potential and expand your professional network.

## MASTER'S DEGREES

Athletic Training

Business Administration

Educational Leadership

Higher Education Leadership

Human Resource Management

Instructional Coaching

Liberal Studies

Occupational Therapy

Organizational Leadership

Physician Assistant Studies\*

Professional and Creative Writing

Sports Leadership

## DOCTORAL DEGREES

Physical Therapy\*\*

\*The ARC-PA has granted Accreditation-Provisional status to the North Central College Master of Physician Assistant Studies Program sponsored by North Central College. Accreditation-Provisional is an accreditation status granted when the plans and resource allocation, if fully implemented as planned, of a proposed program that has not yet enrolled students appear to demonstrate the program's ability to meet the ARC-PA Standards or when a program holding Accreditation-Provisional status appears to demonstrate continued progress in complying with the Standards as it prepares for the graduation of the first class (cohort) of students. Accreditation-Provisional does not ensure any subsequent accreditation status. It is limited to no more than five years from matriculation of the first class. The program's accreditation history can be viewed on the ARC-PA website at [arc-pa.org/accreditation-history-north-central-college/](http://arc-pa.org/accreditation-history-north-central-college/). North Central College matriculated its first class in January, 2022.

\*\*Graduation from a physical therapist education program accredited by the Commission on Accreditation in Physical Therapy Education (CAPTE), 3030 Potomac Ave., Suite 100, Alexandria, Virginia 22305-3085; phone: 703-706-3245; [accreditation@apta.org](mailto:accreditation@apta.org) is necessary for eligibility to sit for the licensure examination, which is required in all states. North Central College is seeking accreditation of a new physical therapist education program from CAPTE. On June 1, 2022, the program submitted an Application for Candidacy, which is the formal application required in the pre-accreditation stage. Submission of this document does not assure that the program will be granted Candidate for Accreditation status. Achievement of Candidate for Accreditation status is required prior to implementation of the professional phase of the program; therefore, no students may be enrolled in professional courses until Candidate for Accreditation status has been achieved. Further, though achievement of Candidate for Accreditation status signifies satisfactory progress towards accreditation, it does not assure that the program will be granted accreditation.

# EVENT RESOURCES & SURVEY

**FEBRUARY 17 VISIT DAY AGENDA**  
WENTZ CONCERT HALL

- 10:00 A.M. CHECK-IN BEGINS\***  
UPDATE: Attend Beyond the Classroom presentation at 10:20 am in Wentz Concert Hall to learn about our Honors Program, Education Abroad program, internships, and more enriching academic opportunities.
- 10:30 A.M. WELCOME PRESENTATION**
- 11:00 A.M. PANEL OF PROFESSORS**
- 11:30 A.M. WALKING CAMPUS TOUR\***
- 12:30 P.M. YOU PICK!\***
- 1:30 - 4:30 P.M. FINE ARTS AUDITIONS**

**\*SCAVENGER HUNT**

- BEYOND THE CLASSROOM PRESENTATION
- TAKE A PHOTO WITH CHIPPY THE CARDINAL OUR MASCOT
- TAKE A PHOTO ON TOUR
- LUNCH AT KAUFMAN DINING HALL
- STUDENT LIFE FAIR
- TAKE SELFIE AT OUR PHOTO BACKDROP
- INTRODUCE YOURSELF TO AN ADMISSION COUNSELOR
- TAKE EVENT SURVEY

Complete 4 scavenger hunt items and show Admission staff at the check-in counter before you leave to pick up more North Central swag!



**12:30-1:30 P.M.**  
*You PICK!*

- A. KAUFMAN DINING HALL**  
221 S. Brainerd St.  
Pick up your non-refundatory meal pass from the check-in counter after the campus tour!
- B. TROLLEY TOUR**  
Fine Arts Center  
Take a tour of the surrounding downtown Naperville area. Trolleys depart from main entrance every 15 minutes. Highly recommended if this is your first time visiting Naperville!
- C. CAMPUS STORE** (OPEN UNTIL 4:00 P.M.)  
100 E. Jefferson Ave.  
Shop at the Campus Store and enjoy 20% off your purchase! Just show them your swag!
- D. STUDENT LIFE FAIR\***  
Wentz Concert Hall Lobby
- E. DOWNTOWN NAPERVILLE**  
Explore more than 100 restaurants and shops in beautiful downtown Naperville within walking distance from campus.
- F. HEALTHCARE DONE DIFFERENTLY**  
Hudson Theatre  
Talk to students and professors from our other Healthcare Program!
- G. TECHNICAL THEATRE DEMO**  
Hudson Theatre

Access event presentations and more

Complete our scavenger hunt to pick up more North Central swag before you leave!

# YOU PICK TIMES!

**TROLLEY TOUR | 12:35 - 1:35 P.M.**

**STUDENT LIFE FAIR | 12:30 - 1:30 P.M.**

**HEALTHCARE DONE DIFFERENTLY | 12:30 - 1:30 P.M.**

**TECHNICAL THEATRE DEMO | 12:30 - 1:30 P.M.**

**CAMPUS STORE | CLOSES AT 4:00 P.M.**

**KAUFMAN DINING HALL | CLOSES AT 1:30 P.M.**

**DOWNTOWN NAPERVILLE | VARIES**



**NAPERVILLE IS RANKED \_\_\_\_\_ OF SMALL CITIES IN THE U.S. FOR STARTING A CAREER AFTER COLLEGE.**

- A 7**
- B 15**
- C 9**
- D 18**



**NAPERVILLE IS RANKED NUMBER \_\_\_\_\_ OF  
SMALL CITIES IN THE U.S. FOR STARTING A  
CAREER AFTER COLLEGE.**

- A 7**
- B 15
- C 9
- D 18



\*CoworkingCafe 2024



**WE INVITE YOU!**

**PLEASE SIT IN THE ROW THE MATCHES YOUR  
ACADEMIC INTEREST BEST**



**SEE SIGNS ON ROWS**



**STEM & HEALTH SCIENCES**

*(Occupational Therapy, Neuroscience, Environmental Studies, etc.)*



**ARTS, HUMANITIES, AND SOCIAL SCIENCES**

*(Shimer Great Books, Psychology, World Languages, etc.)*



**EDUCATION**

*(Elementary, Secondary, Special, etc.)*



**BUSINESS**

*(Management, Marketing, Accounting, etc.)*



# ROADMAP TO

## BECOMING A CARDINAL



- VISIT CAMPUS** (*AND VISIT AGAIN!*)
- APPLY FOR ADMISSION**
- FILE THE FAFSA & REVIEW AWARD OFFER**
- MAKE IT OFFICIAL WITH YOUR DEPOSIT**
- ATTEND ORIENTATION & REGISTER FOR CLASSES**
- FIRST DAY OF CLASSES**

**FREE COLLEGE\***

**DEBT-FREE. STRESS-FREE. TUITION-FREE.**



**NORTH CENTRAL COLLEGE**

**CARDINAL  
PLEDGE**

The Cardinal Pledge program covers **100% of tuition** and fees for qualified first-year students from Illinois, with the goal of expanding access to a North Central education and taking the guesswork out of the financial aid process.

**It's #NotTooGoodToBeTrue!**



**FIND OUT IF  
YOU QUALIFY**





# IT'S NOT TOO GOOD TO BE TRUE!

- 35% of new students will qualify**
- Applying is easy**
- Open to both resident and commuter students**



**FIND OUT IF  
YOU QUALIFY**



# SHOP OUR CAMPUS STORE



**To Claim Your 10% Discount:**



**Bring your name tag during store hours and shop!**

**OR**



**Shop the online campus store with code **WELCOMEBACK!****

