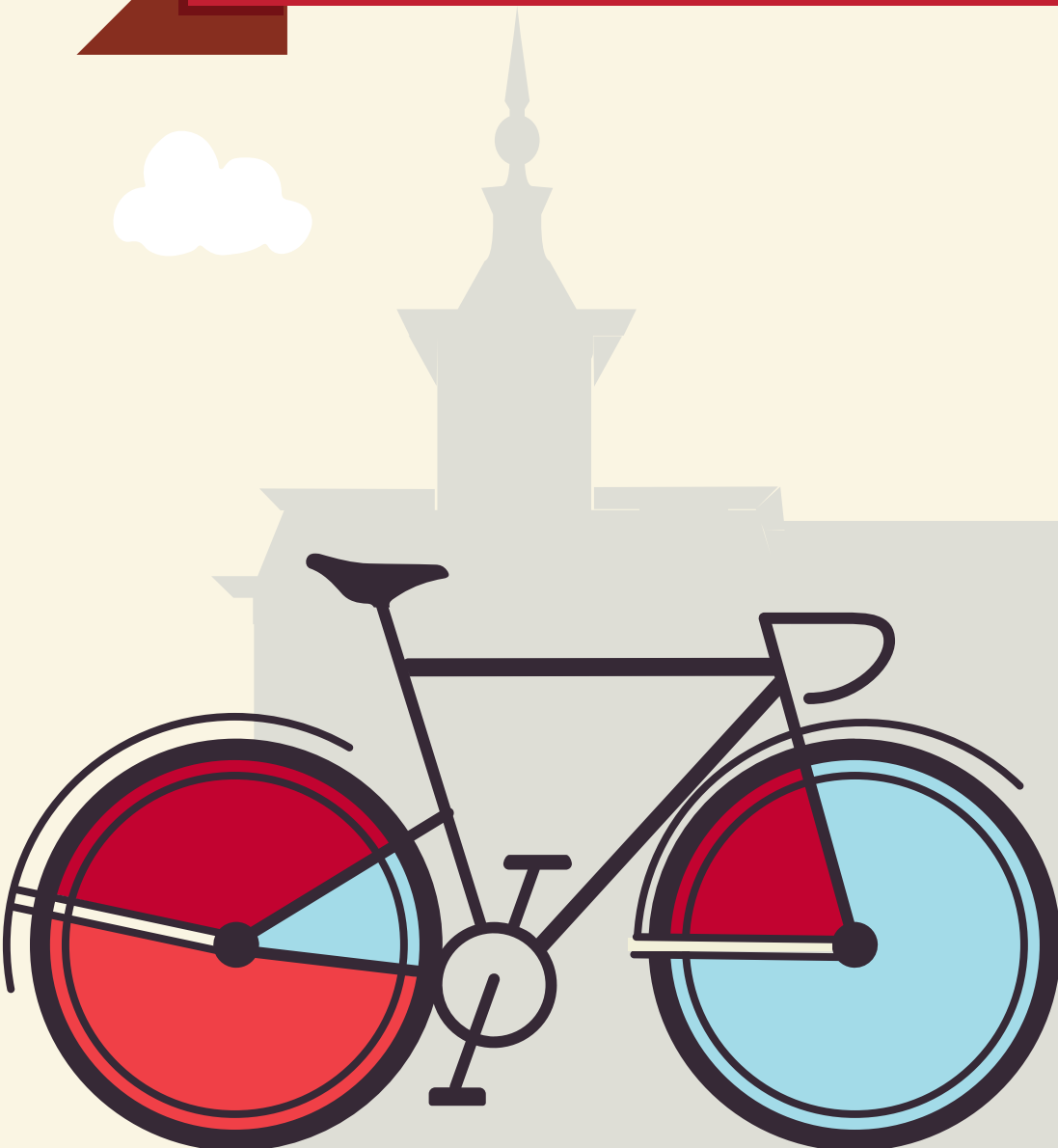


# YOUR GUIDE TO TRANSFERRING TO NORTH CENTRAL COLLEGE

**ELGIN COMMUNITY COLLEGE**





This guide is based on the 2024-2025 Elgin Community College catalog, and the 2024-2025 North Central College catalog. North Central College reserves the right to alter any information listed in this guide, including the transferability of courses, without notice or obligation. For assistance with this guide, please call the Office of Admission at (630) 637-5800 or email at [admissions@noctrl.edu](mailto:admissions@noctrl.edu).

How to use this guide: This course substitution guide is designed to help you select courses at Elgin Community College if you plan to transfer to North Central College. Working with your ECC advisor and NCC transfer admission counselor, refer to this guide to determine courses that meet North Central College requirements in our general education curriculum, academic major and minor requirements, and electives. Your NCC counselor can also provide a major planning worksheet. Listed below is a sample from this guide:

ECC Course Numbers, Titles, Credit					NCC Equivalent Course Numbers & Credit			NCC General Education Codes			Important Information about courses
DEPT	NUM	COURSE TITLE	CREDIT	IAI EQUIV	DEPT	NUM	CREDIT	GENERAL EDUCATION			COMMENTS
ATR	120	Intro to Anthropology	3	S1 900N	ANTH	Elective	3	SOC	GLO		
ATR	210	General Prehistoric Archeology	3	S1 903	ANTH	Elective	3	SOC			ATR 210 + ATR 250 = ANTH 165 (SCI gen ed)

The Cardinal Directions general education curriculum at North Central College is as follows, along with the general education codes you will find in this guide. Please note the column to the far right which indicates which of these requirements may be waived (or required) based on the level of education you achieve prior to transferring. For additional details, please reference the NC catalog: <http://catalog.noctrl.edu/content.php?catoid=26&navoid=2582>.

## CARDINAL DIRECTIONS CURRICULUM MAP

Requirement	General Education Code	Credit	Comments
Composition	COMP	4 credits	Met with A.A. or A.S. degree
Writing Intensive	WRI	4 credits	Met with A.A. or A.S. degree
Public Speaking	COM	4 credits	Met with A.A. or A.S. degree
Arts	ART	4 credits	Met with A.A. or A.S. degree
Humanities	HUM	4 credits	Met with A.A. or A.S. degree
Social Science	SOC	4 credits	Met with A.A. or A.S. degree
Science	SCI	4 credits	Met with A.A. or A.S. degree
Quantitative Analysis	QUA	4 credits	Met with A.A. or A.S. degree
Power Structures or Global Understanding	POW or GLO	4 credits	Met with A.A. or A.S. degree GLO may be met with Study Abroad at NCC
Ethical Dimensions	ETH	4 credits	Met with A.A. or A.S. degree
Well Being	WEL	2 credits	Met with A.A. or A.S. degree
Experiential (One of the following):	-Community Engaged Learning -Study Away/Study Abroad -Student Research -CARD 400 – Senior Seminar: Liberal Arts and Problems of Today	2 credits	Met with A.A. or A.S. degree
Career Readiness: Preparation and Experiential*	CARD 250 – Career Preparation CARD 300 – Career Experiential	4 credits total	Must be taken at NC

- \*An equivalent 3-credit transfer course may be used to fulfill a General Education requirement.
- One course may fulfill multiple requirements.
- College Transfer Credits are courses taken at a college or university after graduating high school and not earned through AP, IB, or CLEP.
- Only 64 semester hours (96 quarter hours) may transfer from a 2-yr college. Developmental courses (under 100-level) do not transfer.
- Requirements met through an eligible A.A. or A.S. degree may also be met with an eligible A.A.S. degree only if applied to the B.A.S. degree.
- Students with less than 28 transferable hours will need to complete CARD 110, a 1-credit transition course.

**COURSE SUBSTITUTIONS FOR STUDENTS TRANSFERRING FROM ELGIN COMMUNITY COLLEGE TO NORTH CENTRAL COLLEGE**

*Based on the 2024-2025 Elgin Community College Catalog and the 2024-2025 North Central College Catalog*

<i>Elgin Community College Courses</i>					<i>NCC Courses</i>			<i>NCC General Education and Comments</i>			
DEPT	NUM	COURSE TITLE	SEM CRED	IAI EQUIV	Dept	Number	Credit	GENERAL EDUCATION		COMMENT	
ABE		Adult Basic & Secondary Ed			No	Credit	0			No credit transfers from this department	
ACC	100	Introductory Accounting	3		No	Credit	0				
ACC	200	Financial Accounting	4		ACCT	201	4				
ACC	210	QuickBooks Online	3		No	Credit	0				
ACC	221	Payroll Accounting	2		No	Credit	0				
ACC	225	Income Tax Accounting	3		ACCT	Elective	3				
ACC	235	Intermediate Accounting I	3		ACCT	317	3			May not use to fulfill 300-level req in major/minor	
ACC	236	Intermediate Accounting II	3		ACCT	318	3			May not use to fulfill 300-level req in major/minor	
ACC	240	Managerial Accounting	4		ACCT	202	4				
ACC	245	Cost Accounting	3		ACCT	307	3			May not use to fulfill 300-level req in major/minor	
ACC	260	Internship in Accounting	3			Elective				Evaluated individually	
ACC	261	Auditing	3		ACCT	Elective	3				
AMI		Medical Imaging			No	Credit	0			No credit transfers from this department	
AMT		Adult Basic & Secondary Edu			No	Credit	0			No credit transfers from this department	
APS	101	Earth Science	4	P1 905L	ENVI	141	4	SCI			
APS	111	Applied Physical Science	4	P1 900L	SCIE	Elective	4	SCI			
APS	290	Physical Science Special Topics	1-3			Elective				Evaluated individually	
ART	101	Drawing I	3		ARTD	120	3	ART			
ART	102	Drawing II	3		ARTD	220	3				
ART	103	Sculpture I	3		ARTD	260	3	ART			
ART	104	Sculpture II	3		ARTD	Elective	3				
ART	105	Ceramics I	3		ARTD	150	3	ART			
ART	106	Ceramics II	3		ARTD	250	3				
ART	107	Painting I	3		ARTD	130	3	ART			
ART	108	Painting II	3		ARTD	230	3				
ART	109	Design I	3		ARTD	107	3				
ART	110	Design II	3		ARTD	160	3				
ART	111	Jewelry I	3		ARTD	Elective	3				
ART	112	Jewelry II	3		ARTD	Elective	3				
ART	113	Printmaking I	3		ARTD	210	3				
ART	114	Printmaking II	3		ARTD	Elective	3				
ART	115	Art Appreciation	3	F2 900	ARTD	100	3	ART			
ART	117	Screen Printing	3		ARTD	Elective	3				
ART	120	Darkroom Photography I	3		ARTD	175	3	ART			
ART	121	Color Photography	3		ARTD	Elective	3				
ART	122	Digital Photography	3		ARTD	275	3				
ART	124	Darkroom Photography II	3		ARTD	Elective	3				
ART	130	Art of Film	3	F2 908	FILM	100	3	ART		Only one of ART 130 or CMS 106 transfers	
ART	151	History of Art I	3	F2 901	ARTH	100	3	ART	GLO		
ART	152	History of Art II	3	F2 902	ARTH	102	3	ART	GLO		
ART	154	Survey of Non-Western Art	3	F2 903N	ARTH	Elective	3	ART			
ART	155	History of Photography	3	F2 904	ARTH	Elective	3	ART			
ART	200	Topics in Art	1-3			Elective				Evaluated individually	
ART	201	Life Drawing	3		ARTD	225	3				
ART	216	Glass Fusing I	3		ARTD	Elective	3				
ART	217	Glass Fusing II	3		ARTD	Elective	3				
ART	220	Digital Manipulation	3		ARTD	Elective	3				
ART	221	Studio & Location Lighting	3		No	Credit	0				
ART	231	The Story of Film to WWII	3	F2 910	FILM	Elective	3	ART	GLO		
ART	232	The Story of Film after WWII	3	F2 911	FILM	Elective	3	ART	GLO		

**COURSE SUBSTITUTIONS FOR STUDENTS TRANSFERRING FROM ELGIN COMMUNITY COLLEGE TO NORTH CENTRAL COLLEGE**

*Based on the 2024-2025 Elgin Community College Catalog and the 2024-2025 North Central College Catalog*

<i>Elgin Community College Courses</i>					<i>NCC Courses</i>			<i>NCC General Education and Comments</i>				
DEPT	NUM	COURSE TITLE	SEM CRED	IAI EQUIV	Dept	Number	Credit	GENERAL EDUCATION			COMMENT	
ART	250	Visual Culture of Disease/Pandemics	3		ARTD	Elective	3					
ART	290	Professional Practices	2			Elective					Evaluated individually	
ART	296	Independent Study - 2D	3			Elective					Evaluated individually	
ART	297	Independent Study in Art	1-3			Elective					Evaluated individually	
ART	298	Independent Study - Photography	3			Elective					Evaluated individually	
ART	299	Independent Study - 3D	3			Elective					Evaluated individually	
ARW		Adult Writing Basic & Secondary Edu			No	Credit	0				No credit transfers from this department	
ASE		Adult Secondary Education			No	Credit	0				No credit transfers from this department	
ATR	120	Intro To Anthropology	3	S1 900N	ANTH	Elective	3	SOC	GLO			
ATR	210	General Prehistoric Archeology	3	S1 903	ANTH	Elective	3	SOC			ATR 210 + ATR 250 = ANTH 165 (SCI gen ed)	
ATR	220	Cultural Anthropology	3	S1 901N	ANTH	Elective	3	SOC	GLO			
ATR	230	Field Archeology	1-3		ANTH	Elective	1-3					
ATR	235	Laboratory Methods in Archeology	1-3		ANTH	Elective	1-3	SCI				
ATR	240	Topics in Anthropology	3			Elective					Evaluated individually	
ATR	250	Human Evolution	3	S1 902	ANTH	Elective	3	SOC			ATR 210 + ATR 250 = ANTH 165 (SCI gen ed)	
ATY	100	Astronomy	3	P1 906	PHYS	110	3	SCI				
ATY	101	Elementary Astronomy	3	P1 906	PHYS	Elective	3	SCI				
AUT		Automotive			No	Credit	0				No credit transfers from this department	
BIO	101	Nutrition For Contemporary Society	3		BIOL	Elective	3	SCI				
BIO	104	Biotechnology and Society	4		No	Credit	0					
BIO	105	Survey of Environmental Biology	3	L1 905	BIOL	106	3	SCI			Only one of BIO 105 or BIO 115 transfers	
BIO	106	Plants and Society	4		BIOL	Elective	4					
BIO	108	Biology for Contemporary Society	4	L1 900L	BIOL	Elective	4	SCI				
BIO	110	Principles of Biology	4	L1 900L	BIOL	Elective	4	SCI				
BIO	113	Molecular & Cellular Biology	4	L1 900L	BIOL	Elective	4	SCI				
BIO	114	Organismal Bio, Evolution, Ecology	4	L1 910L	BIOL	Elective	4	SCI				
BIO	115	Environmental Biology	4	L1 905L	BIOL	106	4	SCI			Only one of BIO 105 or BIO 115 transfers	
BIO	201	Principles of Nutrition	3		BCHM	140	3	SCI				
BIO	234	Special Topics in Biology	1			Elective					Evaluated individually	
BIO	235	Special Topics in Biology	2			Elective					Evaluated individually	
BIO	236	Special Topics in Biology	3			Elective					Evaluated individually	
BIO	240	Human Anatomy and Physiology	5		BIOL	Elective	5					
BIO	245	Human Anatomy and Physiology I	4		BIOL	201	4					
BIO	246	Human Anatomy and Physiology II	4		BIOL	202	4					
BIO	252	Human Anatomy and Cadaver Dissection	4		BIOL	Elective	4					
BIO	265	Microbiology	4		BIOL	145	4					
BRG		Truck Driving			No	Credit	0				No credit transfers from this department	
BUS	100	Introduction To Business	3		SBEN	100	3	SOC	ETH	GLO		
BUS	101	Business Communications	3		No	Credit	0					
BUS	105	Personal Finance	4		SBEN	210	4	WEL				
BUS	112	Legal Environment of Business	3		BUSN	205	3	ETH			Only one of BUS 112 or BUS 113 transfers	
BUS	113	Business Law	3		BUSN	205	3	ETH			Only one of BUS 112 or BUS 113 transfers	
BUS	120	Business Mathematics	3		No	Credit	0					
BUS	131	Customer Service Solutions	1		No	Credit	0					
BUS	140	Business Statistics	3		BUSN	265	3	QUA			Only one of BUS 140, MTH 102 or MTH 120 transfers	
BUS	142	Business Communications II	3		No	Credit	0					
BUS	145	E-Commerce	3		No	Credit	3					
BUS	231	Customer Relationship Management	3		No	Credit	0					
BUS	238	Effective Listening	3		No	Credit	0					
BUS	254	Business Ethics	3		BUSN	Elective	3					

**COURSE SUBSTITUTIONS FOR STUDENTS TRANSFERRING FROM ELGIN COMMUNITY COLLEGE TO NORTH CENTRAL COLLEGE**

*Based on the 2024-2025 Elgin Community College Catalog and the 2024-2025 North Central College Catalog*

<i>Elgin Community College Courses</i>					<i>NCC Courses</i>			<i>NCC General Education and Comments</i>			
DEPT	NUM	COURSE TITLE	SEM CRED	IAI EQUIV	Dept	Number	Credit	GENERAL EDUCATION		COMMENT	
BUS	260	Global Business	3		BUSN	201	3				
BUS	265	Problems and Projects in Business	4		BUSN	Elective				Evaluated individually	
CAD		Computer Assisted Design & Drafting			No	Credit	0			No credit transfers from this department	
CBS	199	Commun & Behav Sci Independt Study	1-4			Elective				Evaluated individually: A maximum 4 hours transfer	
CDN	101	Introduction to 2D - Design	3		ARTD	Elective	3				
CDN	103	Conceptual Visualization	3		ARTD	Elective	3				
CDN	105	Color Theory	3		ARTD	Elective	3				
CDN	107	Introduction to Digital Design	3		ARTD	140	3				
CDN	108	Designing with InDesign	3		INFS	Elective	3				
CDN	109	Design/Adobe Illustrator	3		MEDI	Elective	3				
CDN	110	Image Design/Photoshop	3		INFS	Elective	3				
CDN	115	History of Graphic Design	3		ARTD	Elective	3				
CDN	200	Typography	3		ARTD	242	3				
CDN	201	Layout Design	3		INFS	Elective	3				
CDN	217	Freelance Principles and Practice	3		No	Credit	0				
CDN	219	Basic Web Design	3		ARTD	245	3				
CDN	221	Advanced Web Design	3		INFS	115	3				
CDN	223	Digital Publishing	3		INFS	Elective	3				
CDN	230	Intro to Videography	3		MEDI	Elective	3				
CDN	232	Sound Design	3		MEDI	Elective	3				
CDN	233	Video Editing and Field Production	3		MEDI	222	3				
CDN	234	Video Editing and Studio Production	3		MEDI	322	3			May not use to fulfill 300-level req in major/minor	
CDN	235	Special Topics in Graphic Design	1-3			Elective				Evaluated individually	
CDN	236	Motion Graphics and Special Effects	3		MEDI	Elective	3				
CDN	239	Video Production Capstone	2			Elective				Evaluated individually	
CDN	240	Portfolio Review	2		No	Credit	0				
CHM	101	Preparatory Chemistry	5	P1 902L	CHEM	Elective	5	SCI		Only one of CHM 101 or CHM 112 transfers	
CHM	112	Elements of Chemistry: General	5	P1 902L	CHEM	Elective	5	SCI		Only one of CHM 101 or CHM 112 transfers	
CHM	142	General Chemistry I	5	P1 902L	CHEM	121	5	SCI			
CHM	143	General Chemistry II	5		CHEM	122	5				
CHM	170	Elementary Organic Chemistry	5		CHEM	Elective	5				
CHM	234	Organic Chemistry I	5		CHEM	251	5				
CHM	235	Organic Chemistry II	5		CHEM	252	5				
CHM	290	Special Topics in Chemistry	1-4			Elective				Evaluated individually	
CHN	101	Elementary Chinese I	4		CHNS	101	4				
CHN	102	Elementary Chinese II	4		CHNS	102	4				
CHN	201	Intermediate Chinese I	4		CHNS	Elective	4			Consult MCL department for placement	
CHN	202	Intermediate Chinese II	4		CHNS	Elective	4	HUM		Consult MCL department for placement	
CIS	105	Introduction to Computer Programming	4		CSCS	Elective	4			May not repeat	
CIS	110	Introduction To Computers	3		No	Credit	0				
CIS	114	Digital Cameras and Computers	2		No	Credit	0				
CIS	120	Cyberlaw and Ethics	3		CSCS	Elective	3				
CIS	121	Computer Science I	4		CSCS	160	4				
CIS	123	Computer Science For Engineers	4		CSCS	Elective	4			Only one of CSC 123 or MTH 123 transfers	
CIS	127	Discrete Structures	3		CSCS	230	3				
CIS	147	Internet Publishing	1		INFS	Elective	1				
CIS	148	Web Page Markup Language	2		IFS	Elective	2				
CIS	149	User Interface Design Principles	1		No	Credit	0				
CIS	170	Intro to Computer Forensics	3		No	Credit	0				
CIS	171	Intro to Cyber Crime	2		No	Credit	0				

**COURSE SUBSTITUTIONS FOR STUDENTS TRANSFERRING FROM ELGIN COMMUNITY COLLEGE TO NORTH CENTRAL COLLEGE**

*Based on the 2024-2025 Elgin Community College Catalog and the 2024-2025 North Central College Catalog*

<i>Elgin Community College Courses</i>					<i>NCC Courses</i>			<i>NCC General Education and Comments</i>			
DEPT	NUM	COURSE TITLE	SEM CRED	IAI EQUIV	Dept	Number	Credit	GENERAL EDUCATION		COMMENT	
CIS	205	Visual Programming	4		CSC	Elective	4			May not repeat	
CIS	207	Object-Oriented Programming	4		CSC	Elective	4			Consult CSC department for placement	
CIS	210	Intro to Database Design/Management	3		CSC	360	3			May not repeat or use to fulfill 300-level req	
CIS	215	Multimedia Technologies	2		No	Credit	0				
CIS	222	Linux Operating Systems	2		No	Credit	0				
CIS	223	Computer Science II	4		CSC	Elective	4				
CIS	226	Computer Science III	4		CSC	210	4				
CIS	227	Computer Organization	3		CSC	220	3				
CIS	229	Computer Science Independent Study	2-6			Elective				Evaluated individually	
CIS	230	Computer Hardware and Troubleshooting	4		No	Credit	0				
CIS	231	Intro to Windows Os	3		No	Credit	0				
CIS	236	Special Topics in Computer Science	.5-3			Elective	3			Evaluated individually	
CIS	241	Word Processing Applications	2		No	Credit	0				
CIS	242	Spreadsheet Applications	2		No	Credit	0				
CIS	243	Presentation Applications	2		No	Credit	0				
CIS	244	Database Applications	2		No	Credit	0				
CIS	246	Programming Dynamic Web Pages	3		INF	Elective	2			May not repeat	
CIS	247	Internet Programming	3		CSC	Elective	4			May not repeat; Need syllabus for equivalency	
CIS	248	Internet Programming with PHP	3		CSC	Elective	3			May not repeat	
CIS	252	Network Fundamentals	3		No	Credit	0				
CIS	253	Principles of Cyber Security	3		No	Credit	0				
CIS	256	Network Administration/Microsoft	3		No	Credit	0				
CIS	257	Serving The Internet/ Microsoft	3		No	Credit	0				
CIS	260	Applied Technical Support	3		No	Credit	0				
CIS	262	Applied Programming	3			Elective				Evaluated individually	
CIS	263	Ethical Hacking & Computer Measures	4		No	Credit	0				
CIS	271	Application Device Evidence Recovery	3		No	Credit	0				
CLT		Clinical Lab Technology/ Phlebotomy			No	Credit	0			No credit transfers from this department	
CMS	101	Fundamentals of Speech	3	C2 900	COMM	110	3				
CMS	102	Public Speaking	3		COMM	287	3	ART			
CMS	106	Introduction to Film Appreciation	3	F2 908	FILM	100	3	ART		Only one of ART 130 or CMS 106 transfers	
CMS	112	Special Topics in Speech	1-3			Elective				Evaluated individually	
CMS	120	Oral Interpretation of Literature	3		COMM	Elective	3				
CMS	130	Business and Professional Speaking	3		COMM	280	3				
CMS	146	Forensics Practicum	3		COMM	119	3			A maximum 6 hours of COMM 119 transfers	
CMS	203	Group Communication	3		COMM	214	3	SOC			
CMS	210	Interpersonal Communication	3		COMM	200	3	SOC			
CMS	215	Intercultural Communication	3		COMM	317	3	SOC	GLO	May not use to fulfill 300-level req in major/minor	
CMS	216	Argumentation	3		COMM	285	3	HUM	ETH		
CMS	230	Interviewing	3		COMM	Elective	3				
COL	101	Student Success	1		No	Credit	0				
CRJ	101	Introduction to Criminal Justice	3		SOCI	340	3	GLO		May not use to fulfill 300-level req in major/minor	
CRJ	110	Introduction to Corrections	3		No	Credit	0				
CRJ	111	Stress Management in Law Enforcemt	3		No	Credit	0				
CRJ	120	Introduction to Probation & Parole	3		No	Credit	0				
CRJ	160	Criminal Justice Report Writing	2		No	Credit	0				
CRJ	165	Introduction to Forensic Science	3		No	Credit	0				
CRJ	175	Terrorism and Homeland Security	3		SOCI	Elective	3				
CRJ	180	Crime Prevention	3		SOCI	Elective	3				
CRJ	198	The Police Service	3		No	Credit	0				

**COURSE SUBSTITUTIONS FOR STUDENTS TRANSFERRING FROM ELGIN COMMUNITY COLLEGE TO NORTH CENTRAL COLLEGE**

*Based on the 2024-2025 Elgin Community College Catalog and the 2024-2025 North Central College Catalog*

<i>Elgin Community College Courses</i>					<i>NCC Courses</i>			<i>NCC General Education and Comments</i>			
DEPT	NUM	COURSE TITLE	SEM CRED	IAI EQUIV	Dept	Number	Credit	GENERAL EDUCATION		COMMENT	
CRJ	199	Community Based Policing	3		No	Credit	0				
CRJ	200	Police Operations	3		No	Credit	0				
CRJ	201	Crisis and Conflict Mediation	3		SOCI	Elective	3				
CRJ	205	Criminal Law	3		SOCI	Elective	3				
CRJ	215	Criminal Procedure	3		No	Credit	0				
CRJ	220	Criminalistics	3		No	Credit	0				
CRJ	225	Criminal Investigation	3		No	Credit	0				
CRJ	230	Criminology	3		CRIM	100	3			Only one of CRJ 230 or SOC 230 transfers	
CRJ	231	Juvenile Justice	3		SOCI	221	3	POW			
CRJ	235	Issues in Criminal Justice	.5-3			Elective				Evaluated individually	
CRJ	270	Criminal Justice Organization & Management	3		No	Credit	0				
CRJ	290	Criminal Justice Seminar & Practicum	3			Elective				Evaluated Individually	
CTI		Medical Imaging - Computed Tomography			No	Credit	0			No credit transfers from this department	
CUL		Culinary Arts & Hospitality Institute			No	Credit	0			No credit transfers from this department	
DEA		Dental Assisting			No	Credit	0			No credit transfers from this department	
ECE	100	Health, Safety, Nutrition/Young Children	3		HTSC	Elective	3				
ECE	102	Intro to Early Childhood Educ	3		NCCC	Elective	3				
ECE	106	Experiential Learning ECE	3		No	Credit	0				
ECE	114	Infant-Toddler Care	3		No	Credit	0				
ECE	121	Math & Science for the Young Child	3		NCCC	Elective	3				
ECE	124	Curriculum Planning/Young Child	3		EDUC	Elective	3				
ECE	150	Child Guidance Practices I	3		No	Credit	0				
ECE	174	Child Growth and Development	3		PSYC	210	3			Only one of ECE 174 or PSY 212 transfers	
ECE	201	Field Experience I & Seminar	3		No	Credit	0				
ECE	202	Field Experience II & Seminar	3		No	Credit	0				
ECE	215	Child Care Administration	3		No	Credit	0				
ECE	220	Child, Family and Community	3		No	Credit	0				
ECE	224	Exceptional Young Children	3		EDUC	Elective	3				
ECE	226	Methods of Bilingual and ESL Education	3		EDUC	Elective	3				
ECN	101	Fundamentals of Economics	3	S3 900	ECON	100	3	SOC			
ECN	201	Principles of Microeconomics	3	S3 902	ECON	200	3	SOC			
ECN	202	Principles of Macroeconomics	3	S3 901	ECON	205	3	SOC			
ECN	210	Comparative Economics	3		ECON	Elective	3	SOC			
ECO		English As a Second Language-Computers			No	Credit	0			No credit transfers from this department	
ECS		Environmental Control Systems			No	Credit	0			No credit transfers from this department	
EDN	100	Introduction to Education	3		EDUC	101	3				
EDN	102	Intro to Paraprofessional Education	3		No	Credit	0				
EDN	103	Paraprofessional Clinical Experience	2		No	Credit	0				
EDN	105	Art in The Classroom	3		EDUC	Elective	3				
EDN	112	Technology in Education	3		EDUC	235	3				
EDN	128	Music For The Elementary Teacher	3		EDUC	Elective	3				
EDN	201	Intro To Cross-Cultural Educ	3		EDUC	Elective	3				
EDN	203	Foundations in Bilingual Education	3		LANG	380	3			May not use to fulfill 300-level req in major/minor	
EDN	204	Exceptional Individual	3		EDUC	330	3			May not use to fulfill 300-level req in major/minor	
EDN	211	Pre-Student Teaching Clinical Experience	2		EDUC	Elective	2			Only 30 clinical hours transfer	
EDN	215	Literacy in Education	3		EDUC	Elective	3				
EDN	233	Special Topics in Education	.5			Elective				Evaluated individually	
EDN	234	Special Topics in Education	1			Elective				Evaluated individually	
EDN	235	Special Topics in Education	2			Elective				Evaluated individually	
EDN	236	Special Topics in Education	3			Elective				Evaluated individually	

**COURSE SUBSTITUTIONS FOR STUDENTS TRANSFERRING FROM ELGIN COMMUNITY COLLEGE TO NORTH CENTRAL COLLEGE**

*Based on the 2024-2025 Elgin Community College Catalog and the 2024-2025 North Central College Catalog*

<i>Elgin Community College Courses</i>											<i>NCC Courses</i>			<i>NCC General Education and Comments</i>			
DEPT	NUM	COURSE TITLE	SEM CRED	IAI EQUIV	Dept	Number	Credit	GENERAL EDUCATION			COMMENT						
EDN	237	Special Topics in Education	4			Elective					Evaluated individually						
EGR	100	Introduction to Engineering	2		ENGR	100	2										
EGR	101	Engineering Design Graphics/Cad	4		ENGR	Elective	4										
EGR	152	Statics	3		PHYS	211	3										
EGR	172	Mechanics of Materials	3		PHYS	251	3										
EGR	192	Engineering Thermodynamics	3		PHYS	340	3				May not use to fulfill 300-level req in major/minor						
EGR	252	Dynamics	3		PHYS	Elective	3										
EGR	272	Circuit Analysis and Theory	4		ELEC	250	4										
EGR	292	Introduction to Digital Systmes	4		ELEC	200	4										
EMT		Emergency Medical Tech.-Paramedic			No	Credit	0				No credit transfers from this department						
ENG	098	Developmental Compositition	3		No	Credit	0										
ENG	101	English Composition I	3	C1 900	ENGL	110	3	COMP									
ENG	102	English Composition II	3	C1 901R	ENGL	110	3	COMP			or WRI if ENG 101 is complete						
ENG	110	Creative Writing	3		ENGL	210	3	ART									
ENG	210	Fiction Writing	3		ENGL	Elective	3	ART			May not repeat						
ENG	212	Poetry Writing	3		ENGL	Elective	3	ART			May not repeat						
ENG	213	Literary Non-Fiction	3		ENGL	Elective	3	ART			May not repeat						
ENG	215	Introduction to Linguistics	3		ENGL	270	3	GLO									
ESL		English as Second Language			No	Credit	0				No credit transfers from this department						
ENT	101	Entrepreneurship	3		BUSN	170	3										
ENT	111	Small Business Management	3		BUSN	Elective	3										
ENT		All other Entrepreneurship courses			No	Credit	0										
FRN	101	Elementary French I	4		FREN	101	4										
FRN	102	Elementary French II	4		FREN	102	4										
FRN	201	Intermediate French I	4		FREN	201	4										
FRN	202	Intermediate French II	4	H1 900	FREN	202	4	HUM									
FRN	211	Conversational French I	3		FREN	Elective	3										
FRN	212	Conversational French II	3		FREN	Elective	3										
FRN	261	French Conversation Composition	3		FREN	Elective	3	HUM			Consult MCL department for placement						
FRN	262	Adv French Composition Conversation	3		FREN	Elective	3	HUM			Consult MCL department for placement						
FSS		Fire Science And Safety			No	Credit	0				No credit transfers from this department						
GEO	115	Introduction To Physical Geograpy	3	P1 909	SCIE	Elective	3	SCI									
GEO	116	Human Geography	3	S4 900N	SOCI	Elective	3	SOC			or HIST elective						
GEO	216	Geography of Developing World	3	S4 902N	SOCI	Elective	3	SOC			or HIST elective						
GET		Technology, General Core			No	Credit	0				No credit transfers from this department						
GLY	101	Survey of Geology	3		SCIE	Elective	3	SCI									
GLY	105	Environmental Geology	3	P1 908	SCIE	Elective	3	SCI									
GLY	112	Physical Geology	4	P1 907L	SCIE	Elective	4	SCI									
GLY	220	Vertebrate Paleontology Field Method	2		SCIE	Elective	2	SCI									
GRM	101	Elementary German I	4		GRMN	101	4										
GRM	102	Elementary German II	4		GRMN	102	4										
GRM	201	Intermediate German I	4		GRMN	201	4										
GRM	202	Intermediate German II	4	H1 900	GRMN	202	4	HUM	GLO								
GRM	211	Conversational German I	3		GRMN	Elective	3										
GRM	212	Conversational German II	3		GRMN	Elective	3										
GRM	261	German Conversation Composition	3		GRMN	Elective	3	HUM			Consult MCL department for placement						
GRM	262	Advanced German Composition Conv	3		GRMN	Elective	3	HUM			Consult MCL department for placement						
GSD		General Student Development			No	Credit	0				No credit transfers from this department						
HAC		Heating, Air Cond, & Refrigeration			No	Credit	0				No credit transfers from this department						
HIN	101	Elementary Hindi I	4		LANG	101	4										



**COURSE SUBSTITUTIONS FOR STUDENTS TRANSFERRING FROM ELGIN COMMUNITY COLLEGE TO NORTH CENTRAL COLLEGE**

*Based on the 2024-2025 Elgin Community College Catalog and the 2024-2025 North Central College Catalog*

<i>Elgin Community College Courses</i>											<i>NCC Courses</i>			<i>NCC General Education and Comments</i>				
DEPT	NUM	COURSE TITLE	SEM CRED	IAI EQUIV	Dept	Number	Credit	GENERAL EDUCATION			COMMENT							
HIN	102	Elementary Hindi II	4		LANG	102	4											
HIS	100	Topics in History	1-3			Elective						Evaluated individually						
HIS	101	History of Western Civilization I	3	S2 902	HIST	101	3	SOC										
HIS	102	History of Western Civilization II	3	S2 903	HIST	102	3	SOC	GLO									
HIS	115	History of World Civilization I	3	S2 912N	HIST	Elective	3	SOC										
HIS	116	History of World Civilization II	3	S2 913N	HIST	155	3	SOC										
HIS	118	Foundations of Civilization	3	H2 900	HIST	Elective	3	HUM										
HIS	119	History & Politics of Gender	3	S9 902D	HIST	Elective	3	SOC										
HIS	120	History of The Non Western World I	3	S2 904N	HIST	Elective	3	SOC										
HIS	121	History of The Non Western World II	3	S2 905N	HIST	Elective	3	SOC										
HIS	130	History of Latin America I	3	S2 920N	HIST	175	3	SOC										
HIS	131	History of Latin America II	3	S2 920N	HIST	Elective	3	SOC										
HIS	140	History of Asia & Pacific I	3	S2 920N	HIST	Elective	3	SOC										
HIS	141	History of Asia & Pacific II	3	S2 920N	HIST	Elective	3	SOC										
HIS	150	History of Native America	3		HIST	Elective	3	SOC	GLO	POW								
HIS	151	US History To 1870	3	S2900	HIST	Elective	3	SOC	GLO	POW								
HIS	152	United States History Since 1865	3	S2 901	HIST	Elective	3	SOC	GLO	POW		HIS 152 + HIS 170 = HIST 224						
HIS	160	American Civilization	3	H2 904	HIST	Elective	3	HUM										
HIS	170	History of Illinois	3		HIST	Elective	3	SOC				HIS 152 + HIS 170 = HIST 224						
HIS	180	History of US Latinas and Latinos	3	S2 923D	HIST	Elective	3	SOC										
HIS	189	African American History I	3	S2 923D	HIST	Elective	3	SOC				HIS 189 + HIS 190 = HIST 112						
HIS	190	African American History II	3	S2 923D	HIST	Elective	3	SOC				HIS 189 + HIS 190 = HIST 112						
HIS	201	Modern European History	3		HIST	280	3	SOC										
HIS	219	Honors Seminar in History	1			Elective						Evaluated individually						
HIS	240	East Asian History to 1600	3		HIST	Elective	3	SOC										
HIS	241	East Asian History since 1600	3		HIST	165	3	HUM	GLO									
HIS	297	Independent Study in History	1-3			Elective						Evaluated individually						
HOS		Hospitality Management			No	Credit	0					No credit transfers from this department						
HPE	112	Intro to Medical Terminology	3		HTSC	156	3											
HPE	270	Global Context of Healthcare	2		HTSC	Elective	2											
HSG		Human Services			No	Credit	0											
HST		Histotechnology			No	Credit	0					No credit transfers from this department						
HUM	100	Topics in Humanities	1-3			Elective						Evaluated individually						
HUM	101	Introduction to Western Humanities I	3	HF 902	NCCC	Elective	3	HUM										
HUM	102	Introduction to Western Humanities II	3	HF 903	NCCC	Elective	3	HUM										
HUM	103	Intro to Non-West Humanities	3	HF 904N	NCCC	Elective	3	HUM										
HUM	104	Classic Theatre-Humanities in Dr	3		ENGL	Elective	3	HUM										
HUM	107	Global Perspectives on World Civ	3		GLST	Elective	3	HUM				Only one of HUM 107 or INS 107 transfers						
HUM	110	Introduction to Philosophy	3	H4 900	PHIL	100	3	HUM	ETH									
HUM	112	Western Philosophy I	3	H4 901	PHIL	260	3	HUM	GLO	ETH								
HUM	113	Western Philosophy II	3	H4 902	PHIL	265	3	HUM	ETH									
HUM	115	Critical Reasoning	3	H4 906	PHIL	Elective	3	HUM										
HUM	116	Logic	3	H4 906	PHIL	230	3	HUM	QUA									
HUM	117	Social & Political Philosophy	3		PHIL	340	3	HUM	ETH	POW		May not use to fulfill 300-level req in major/minor						
HUM	118	Philosophy of Science	3		PHIL	280	3	HUM										
HUM	124	Culture and Science in the West	3		NCCC	Elective	3	HUM										
HUM	170	Intro to Asian Philosophies	3	H4 903N	PHIL	Elective	3	HUM										
HUM	202	Philosophy of Religion	3	H4 905	PHIL	360	3	HUM	ETH			May not use to fulfill 300-level req in major/minor						
HUM	203	Comparative Religions	3	H4 904N	RELG	100	3	HUM	GLO									
HUM	204	Introduction to Religious Studies	3	H5 900	RELG	100	3	HUM	GLO			Only one of HUM 204 or INS 204 transfers						

**COURSE SUBSTITUTIONS FOR STUDENTS TRANSFERRING FROM ELGIN COMMUNITY COLLEGE TO NORTH CENTRAL COLLEGE**

*Based on the 2024-2025 Elgin Community College Catalog and the 2024-2025 North Central College Catalog*

<i>Elgin Community College Courses</i>											<i>NCC Courses</i>			<i>NCC General Education and Comments</i>				
DEPT	NUM	COURSE TITLE	SEM CRED	IAI EQUIV	Dept	Number	Credit	GENERAL EDUCATION			COMMENT							
HUM	205	Introduction to Mythology	3	H9 901	CLSS	250	3	HUM										
HUM	208	Life & Work in the 21st Century	3		NCCC	Elective	3	SOC			Only one of HUM 208 or INS 208 transfers							
HUM	216	Ethics	3	H4 904	PHIL	110	3	HUM	ETH									
HUM	217	Aesthetics	3		PHIL	270	3	ART	POW		Same as ART 270							
HUM	219	Honors Seminar in Humanities	1			Elective					Evaluated individually							
HUM	224	Cultural History of Pacific Asia	3		HIST	Elective	3	HUM										
HUM	231	Contemporary Moral Issues	3		PHIL	Elective	3	HUM	ETH									
HUM	297	Independent Study in Humanities	1-3			Elective					Evaluated individually							
HUS		Human Servies			No	Credit	0				No credit transfers from this department							
HWM	100	Introduction to Health and Wellness	1		No	Credit	0											
HWM	132	Group Fitness Instructor I	1		No	Credit	0											
HWM	133	Group Fitness Instructor II	1		No	Credit	0											
HWM	136	Advanced Group Fitness Instruction	1		No	Credit	0											
HWM	137	Group Fitness as a Profession	1		No	Credit	0											
HWM	139	Sport and Exercise Psychology	3		KINE	Elective	3											
HWM	142	Structural Kinesiology	3		KINE	317	3				May not use to fulfill 300-level req in major/minor							
HWM	147	Personal Training I	3		No	Credit	0											
HWM	148	Personal Training II	5		No	Credit	0											
IMT		Industrial Manufacturing Technology			No	Credit	0				No credit transfers from this department							
INS	100	Topics in International Studies	1-3			Elective					Evaluated individually							
INS	107	Global Perspectives World Civilization	3		GLST	Elective	3	HUM			Only one of HUM 107 or INS 107 transfers							
INS	204	Introduction to Religious Studies	3		RELG	100	3	HUM	GLO		Only one of HUM 204 or INS 204 transfers							
INS	206	Field Study in Foreign Cultures	1-3			Elective					Evaluated individually							
INS	208	Life & Work in The 21st Century	3		NCCC	Elective	3	SOC			Only one of HUM 208 or INS 208 transfers							
INS	219	Honors Seminar-International Studies	1			Elective					Evaluated individually							
INS	280	Non-Traditional Language I	2		LANG	Elective	2											
INS	281	Non-Traditional Language II	2		LANG	Elective	2											
INS	297	Independent Study in Internatl Studies	1-3			Elective					Evaluated individually							
IST		Maintenance Technology			No	Credit	0				No credit transfers from this department							
ITN	101	Elementary Italian I	4		LANG	101	4											
ITN	102	Elementary Italian II	4		LANG	102	4											
ITN	201	Intermediate Italian I	4		LANG	Elective	4											
ITN	202	Intermediate Italian II	4		LANG	Elective	4											
JPN	101	Elementary Japanese I	4		JAPN	101	4											
JPN	102	Elementary Japanese II	4		JAPN	102	4											
JPN	201	Intermediate Japanese I	4		JAPN	201	4	HUM										
JPN	202	Intermediate Japanese II	4		JAPN	202	4	SOC										
JRN	130	Intro To Mass Communications	3		COMM	185	3	SOC	GLO	POW								
JRN	131	Fundamentals of Journalism	3		MEDI	225	3											
JRN	134	Newspaper Workshop	1		MEDI	152	1											
JRN	298	Topics in Journalism	3			Elective					Evaluated individually							
LIT	201	Introduction to Literature: Fiction	3	H3 901	ENGL	104	3	HUM										
LIT	202	Intro To Literature: Drama	3	H3 902	ENGL	Elective	3	HUM										
LIT	203	Intro To Literature: Poetry	3	H3 903	ENGL	Elective	3	HUM										
LIT	204	Survey of African American Poetry	3		ENGL	Elective	3											
LIT	205	Introduction to Shakespeare	3	H3 905	ENGL	302	3	HUM			May not use to fulfill 300-level req in major/minor							
LIT	206	Latinx Literatures in the US	3	H3 910D	ENGL	Elective	3	HUM										
LIT	209	African American Lit 1619-1940	3		ENGL	Elective	3	HUM	POW		LIT 209 + LIT 218 = ENGL 232							
LIT	210	Multicultural American Literature	3	H3 910D	ENGL	332	3	HUM	POW		May not use to fulfill 300-level req in major/minor							
LIT	211	Introduction To Literature By Women	3	H3 911D	ENGL	234	3	HUM										

**COURSE SUBSTITUTIONS FOR STUDENTS TRANSFERRING FROM ELGIN COMMUNITY COLLEGE TO NORTH CENTRAL COLLEGE**

*Based on the 2024-2025 Elgin Community College Catalog and the 2024-2025 North Central College Catalog*

<i>Elgin Community College Courses</i>											<i>NCC Courses</i>			<i>NCC General Education and Comments</i>				
DEPT	NUM	COURSE TITLE	SEM CRED	IAI EQUIV	Dept	Number	Credit	GENERAL EDUCATION			COMMENT							
LIT	218	African American Lit 1940 - Present	3		ENGL	Elective	3	HUM	POW		LIT 218 + LIT 209 = ENGL 232							
LIT	220	LGBTQ Literature	3	H3 911D	ENGL	Elective	3	HUM										
LIT	223	International Literature	3	H3 908N	ENGL	Elective	3	HUM										
LIT	225	Children's Literature	3	H3 918	ENGL	126	3	HUM	ETH									
LIT	229	Novel and Film	3	H9 900	ENGL	Elective	3	HUM										
LIT	230	Masterpieces of World Lit	3	H3 906	ENGL	Elective	3	HUM										
LIT	232	Topics in Literature	3			Elective	0				Evaluated individually							
LIT	235	Bible as Literature	3	H5 901	ENGL	Elective	3	HUM										
LIT	241	Great Books Seminar I	3	H3 906	ENGL	Elective	3	HUM										
LIT	242	Great Books Seminar II	3	H3 907	ENGL	Elective	3	HUM										
LIT	243	Great Books Seminar III	3	H3 906	ENGL	Elective	3	HUM										
LIT	244	Great Books Seminar IV	3	H3 907	ENGL	Elective	3	HUM										
LIT	245	Great Books Seminar V	3	H3 906	ENGL	Elective	3	HUM										
LTC	099	College Literacy	5		No	Credit	0											
MAM		Mammography			No	Credit					No credit transfers from this department							
MAS		Massage Therapy			No	Credit	0				No credit transfers from this department							
MED		Medical Assisting			No	Credit	0				No credit transfers from this department							
MKT	103	Marketing	3		MKTG	300	3				May not use to fulfill 300-level req in major/minor							
MKT	105	Sales	3		MKTG	340	3				May not use to fulfill 300-level req in major/minor							
MKT	115	Advertising and Promotion	3		MKTG	Elective	3											
MKT	160	Digital and Social Media Marketing	3		MKTG	330	3				May not use to fulfill 300-level req in major/minor							
MKT	290	Marketing Internship	3			Elective					Evaluated individually							
MMR	101	Principles of Retailing	3		MKTG	Elective	3											
MMR	160	Retail Management	3		MGMT	Elective	3											
MMT	101	Principles of Management	3		MGMT	305	3				May not use to fulfill 300-level req in major/minor							
MMT	102	Organizational Behavior	3		MGMT	Elective	3											
MMT	107	Human Resource Management	3		MGMT	345	3				May not use to fulfill 300-level req in major/minor							
MMT	125	Leadership Development	3		LEAD	Elective	3											
MRI		Magnetic Resonance Imaging			No	Credit	0				No credit transfers from this department							
MTH		All MTH Courses Numbered Below 100 Level	0		No	Credit	0											
MTH	102	General Education Statistics	3	M1 902	PSYC	250	3	QUA			Only one of BUS140, MTH 102 or MTH 120 transfers							
MTH	104	General Education Mathematics	3	M1 904	MATH	120	3	QUA										
MTH	107	Technical Math I	4		No	Credit	0											
MTH	109	Technical Math II	4		No	Credit	0											
MTH	110	Math For Elementary Teaching I	3		MATH	107	3											
MTH	112	College Algebra	4		MATH	Elective	4											
MTH	113	Math For Elementary Teaching II	3	M1 903	MATH	108	3	QUA										
MTH	114	Trigonometry	3		MATH	140	3											
MTH	120	Statistics I	4	M1 902	BUSN	265	4	QUA			Only one of BUS 140, MTH 102 or MTH 120 transfers							
MTH	123	Computer Science For Engineers	4		CSCE	Elective	4				Only one of CIS 123 or MTH 123 transfers							
MTH	125	Finite Math For Business & Management	3	M1 906	MATH	130	3	QUA										
MTH	126	Calculus For Business/Social Science	4	M1 900B	MATH	Elective	4	QUA										
MTH	190	Calculus With Analytic Geometry I	5	M1 900 1	MATH	151	4	QUA										
MTH	210	Calculus With Analytic Geometry II	5	M1 900 2	MATH	152	5	QUA										
MTH	230	Calculus With Analytic Geometry III	5	M1 900 3	MATH	253	5	QUA										
MTH	240	Introduction to Linear Algebra	4		MATH	300	3				May not use to fulfill 300-level req in major/minor							
MTH	250	Differential Equations	4		MATH	315	4				May not use to fulfill 300-level req in major/minor							
MUS	100	Introduction To Music Theory	2		MUSI	Elective	2											
MUS	101	Band	1		MUEN	113	1											
MUS	102	Jazz Lab Band	1		MUEN	120	1											

**COURSE SUBSTITUTIONS FOR STUDENTS TRANSFERRING FROM ELGIN COMMUNITY COLLEGE TO NORTH CENTRAL COLLEGE**

*Based on the 2024-2025 Elgin Community College Catalog and the 2024-2025 North Central College Catalog*

<i>Elgin Community College Courses</i>					<i>NCC Courses</i>			<i>NCC General Education and Comments</i>			
DEPT	NUM	COURSE TITLE	SEM CRED	IAI EQUIV	Dept	Number	Credit	GENERAL EDUCATION		COMMENT	
MUS	104	Music of The World	3	F1 903N	MUSI	156	3	ART	GLO		
MUS	105	Music Appreciation	3	F1 900	MUSI	150	3	ART			
MUS	106	Music Literature From 1400 To 1750	3	F1 901	MUSI	Elective	3	ART			
MUS	107	Music Literature From 1750 To Present	3	F1 902	MUSI	Elective	3	ART			
MUS	108	Elgin Area Honors Choir	1		MUEN	Elective	1				
MUS	109	Keyboard Harmony	2		MUSI	Elective	2				
MUS	110	Choir I	1		MUEN	101	1				
MUS	111	Choral Ensemble	1		MUEN	Elective	1				
MUS	112	Elgin Master Choral	1		MUEN	Elective	1				
MUS	113	Chamber Vocal Ensemble	1		MUEN	Elective	1				
MUS	115	Sight Singing & Ear Training I	2		MUSI	Elective	2				
MUS	116	Musical Theater	1		THEA	Elective	1			May repeat up to 4 hours	
MUS	120	Brass Ensemble	1		MUEN	Elective	1				
MUS	121	Woodwind Ensemble	1		MUEN	Elective	1				
MUS	122	Percussion Ensemble	1		MUEN	Elective	1				
MUS	123	String Ensemble	1		MUEN	Elective	1				
MUS	124	Symphony Orchestra	1		MUEN	112	1				
MUS	125	Intermediate Symphony Orchestra	1		MUEN	112	1				
MUS	126	Class Piano I	2		MUAL	110	2				
MUS	127	Class Piano II	2		MUAL	110	2				
MUS	128	Theory & Ear Training I	4		MUSI	101/Elec	3/1				
MUS	129	Theory & Ear Training II	4		MUSI	102/108	3/1				
MUS	130	Advanced Symphony Orchestra	1		MUEN	112	1				
MUS	131	American Roots Ensemble	1		MUEN	Elective	1				
MUS	132	Electronic Music Ensemble	1		MUEN	Elective	1				
MUS	133	Hip Hop Ensemble	1		MUEN	Elective	1				
MUS	135	Class Guitar I	2		MUAL	185	2				
MUS	140	Applied Music	1		MUAL	Elective	1			Transfers if taken as college student	
MUS	142	Musicianship Seminar	1		MUSI	Elective	1				
MUS	145	Hip Hop Appreciation	3	F1 913	MUSI	Elective	3	ART			
MUS	146	Rock & Roll Music Appreciation	3	F1 913	MUSI	Elective	3	ART			
MUS	150	Intro Mus Prod: Listening & FX	3		MUSI	Elective	3				
MUS	152	Songwriting	3		MUSI	Elective	3				
MUS	155	Seminar: Music Business	3		MUSI	Elective	3				
MUS	158	Beat-Making with Ableton Live	3		MUSI	Elective	3				
MUS	160	Fundamentals Music Technology	3		MUSI	Elective	3				
MUS	170	Recording Technology 1: Rec./Acous.	3		MUSI	Elective	3				
MUS	171	Recording Technology 2 Adv Rec and Mixing	3		MUSI	Elective	3				
MUS	172	Recording Technology 3 Mastering & Distrib	3		MUSI	Elective	3				
MUS	180	Music Composition	3		MUSI	Elective	3				
MUS	205	Topics in Music	1-3			Elective	3			Evaluated individually	
MUS	228	Theory & Ear Training III	4		MUSI	201/Elec	3/1				
MUS	229	Theory & Ear Training IV	4		MUSI	202/Elec	3/1				
MUS	240	Applied Music	1		MUAL	Elective	1			Transfers if taken as college student	
MUS	297	Independent Study in Music	1-3			Elective				Evaluated individually	
NUR		Nursing			No	Credit	0			No credit transfers from this department	
OPH		Ophithalmic Technician			No	Credit	0			No credit transfers from this department	
PAR		Paralegal			No	Credit	0			No credit transfers from this department	
PAS		Pastry			No	Credit	0			No credit transfers from this department	
PEM	220	Phys Educ at Elem Level	3		KINE	Elective	3				

**COURSE SUBSTITUTIONS FOR STUDENTS TRANSFERRING FROM ELGIN COMMUNITY COLLEGE TO NORTH CENTRAL COLLEGE**

*Based on the 2024-2025 Elgin Community College Catalog and the 2024-2025 North Central College Catalog*

<i>Elgin Community College Courses</i>					<i>NCC Courses</i>			<i>NCC General Education and Comments</i>			
DEPT	NUM	COURSE TITLE	SEM CRED	IAI EQUIV	Dept	Number	Credit	GENERAL EDUCATION		COMMENT	
PHC	109	Physical Fitness I	.5-3		KINE	Activity	.5-3			A maximum 8 hours of KINE activity transfer	
PHC	110	Physical Fitness II	.5-3		KINE	Activity	.5-3			A maximum 8 hours of KINE activity transfer	
PHC	111	Individualized Fitness Programming	1		KINE	Activity	1			A maximum 8 hours of KINE activity transfer	
PHC	113	Tennis I	.5-1		KINE	Activity	.5-1			A maximum 8 hours of KINE activity transfer	
PHC	115	Intermediate Tennis	.5-1		KINE	Activity	.5-1			A maximum 8 hours of KINE activity transfer	
PHC	130	Beginning Fitness Walking	1		KINE	Activity	1			A maximum 8 hours of KINE activity transfer	
PHC	132	Advanced Fitness Walking	1		KINE	Activity	1			A maximum 8 hours of KINE activity transfer	
PHC	167	Free Exercise	1-2		KINE	Activity	1-2			A maximum 8 hours of KINE activity transfer	
PHC	200	Fundamentals of Weight Training	1		KINE	Activity	1			A maximum 8 hours of KINE activity transfer	
PHR	101	Health	3		HTSC	Elective	3	WEL			
PHR	102	First Aid & Safety	3		HTSC	100	3	WEL			
PHR	110	Active for Life	2		HTSC	Elective	2				
PHR	115	Healthy Eating for Life	2		HTSC	Elective	2				
PHY	101	General Physics	5	P1 900L	PHYS	131	5	SCI		Only one of PHY 101 or 211 transfer	
PHY	102	General Physics	5		PHYS	132	5			Only one of PHY 102 or 212 transfer	
PHY	211	Engineering Physics I	5	P2 900L	PHYS	161	5	SCI		Only one of PHY 101 or 211 transfer	
PHY	212	Engineering Physics II	5		PHYS	162	5			Only one of PHY 102 or 212 transfer	
PHY	213	Engineering Physics III	5		PHYS	263	5				
PHY	215	Thermal Physics	3		PHYS	340	3			May not use to fulfill 300-level req in major/minor	
PHY	216	Quantum Physic	2		PHYS	Elective	3				
POS	140	Community and Civic Engagement	3		LEAD	Elective	3	SOC			
POS	141	Topics in Government	1-3			Elective				Evaluated individually	
POS	150	American Government - National	3	S5 900	POLS	101	3	SOC	POW		
POS	151	Amer Govt State Local	3	S5 902	POLS	Elective	3	SOC			
POS	152	Principles of Political Science	3	S5 903	POLS	Elective	3	SOC			
POS	219	Honors Seminar in Government	1		POLS	Elective	1	SOC			
POS	250	Comparative Political Systems	3	S5 905	POLS	221	3	SOC	GLO		
POS	251	International Relations	3	S5 904N	POLS	102	3	SOC	GLO		
POS	253	Non-Western Comparative Government	3	S5 906N	POLS	Elective	3	SOC			
POS	297	Independent Study in Government	1-3			Elective				Evaluated individually	
PSC		Public Safety Communications			No	Credit	0			No credit transfers from this department	
PSY	100	Introduction To Psychology	3	S6 900	PSYC	100	3	SOC			
PSY	201	Experimental Psychology	3		PSYC	Elective	3	SOC			
PSY	210	Personality	3		PSYC	320	3			May not use to fulfill 300-level req in major/minor	
PSY	211	Educational Psychology	3		PSYC	205	3				
PSY	212	Child Psychology	3	S6 903	PSYC	210	3	SOC		Only one of ECE 174 or PSY 212 transfers	
PSY	213	Psychology of Adolescence	3		PSYC	220	3				
PSY	214	Adulthood and Aging	3	S6 905	PSYC	230	3	SOC			
PSY	215	Social Psychology	3	S8 900	PSYC	240	3	SOC		Only one of PSY 215 or SOC 215 transfers	
PSY	216	Abnormal Psychology	3		PSYC	324	3			May not use to fulfill 300-level req in major/minor	
PSY	218	Human Growth & Development	3	S6 902	PSYC	235	3	SOC			
PSY	220	Special Topics in Psychology	1-3			Elective				Evaluated individually	
PSY	221	Forensic Psychology	3		No	Credit	0				
PSY	225	Human Sexuality	3		PSYC	Elective	3			Only one of PSY 225 or SOC 225 transfers	
PTA		Physical Therapy Assistant			No	Credit	0			No credit transfers from this department	
RAD		Medical Imaging - Radiography			No	Credit	0			No credit transfers from this department	
RDG		Reading			No	Credit	0			No credit transfers from this department	
RSN	101	Elementary Russian	4		LANG	Elective	4				
RSN	102	Elementary Russian II	4		LANG	Elective	4				
SCM	101	Supply Chain Operations Management	3		MGMT	Elective	3				

**COURSE SUBSTITUTIONS FOR STUDENTS TRANSFERRING FROM ELGIN COMMUNITY COLLEGE TO NORTH CENTRAL COLLEGE**

*Based on the 2024-2025 Elgin Community College Catalog and the 2024-2025 North Central College Catalog*

Elgin Community College Courses					NCC Courses			NCC General Education and Comments			
DEPT	NUM	COURSE TITLE	SEM CRED	IAI EQUIV	Dept	Number	Credit	GENERAL EDUCATION		COMMENT	
SCM	105	Transportation and Logistics	3		No	Credit	0				
SCM	120	Warehouse Management	3		No	Credit	0				
SCM	190	Internship-Supply Chain Management	1-2			Elective				Evaluated individually	
SGT		Surgical Technology			No	Credit	0			No credit transfers from this department	
SOC	100	Principles of Sociology	3	S7 900	SOCI	100	3	SOC	POW		
SOC	101	Introduction to Family Violence	3		SOCI	Elective	3				
SOC	201	Social Problems	3	S7 901	SOCI	Elective	3	SOC			
SOC	209	Racial and Ethnic Relations	3	S7 903D	SOCI	211	3	SOC	POW		
SOC	210	Marriage and Family	3	S7 902	SOCI	342	3	SOC		May not use to fulfill 300-level req in major/minor	
SOC	215	Social Psychology	3	S8 900	PSYC	240	3	SOC		Only one of PSY 215 or SOC 215 transfers	
SOC	220	Gender Roles and Social Change	3	S7 904D	GSST	100	3	SOC	POW		
SOC	225	Human Sexuality	3		SOCI	Elective	3			Only one of PSY 225 or SOC 225 transfers	
SOC	230	Criminology	3		CRIM	100	3			Only one of CRJ 230 or SOC 230 transfers	
SPN	101	Elementary Spanish I	4		SPAN	101	4				
SPN	102	Elementary Spanish II	4		SPAN	102	4				
SPN	171	Basic Spanish: Medical Personnel I	3		No	Credit					
SPN	172	Basic Spanish: Medical Personnel II	3		No	Credit					
SPN	201	Intermediate Spanish I	4		SPAN	201	4	HUM	GLO		
SPN	202	Intermediate Spanish II	4	H1 900	SPAN	202	4	HUM	GLO		
SPN	211	Conversational Spanish I	3		SPAN	Elective	3				
SPN	212	Conversational Spanish II	3		SPAN	Elective	3				
SPN	241	Spanish for Teachers I	3		No	Credit	0				
SPN	242	Spanish for Teachers II	3		No	Credit	0				
SPN	251	Spanish for Spanish Speakers I	4		SPAN	Elective	4				
SPN	252	Spanish for Spanish Speakers II	4		SPAN	Elective	3				
SPN	261	Spanish Conversation Composition	3		SPAN	Elective	3			Consult MCL department for placement	
SPN	262	Advanced Spanish Comp Conversation	3		SPAN	Elective	3			Consult MCL department for placement	
SPN	271	Latin American Civilization	3		SPAN	337	3	GLO		May not use to fulfill 300-level req in major/minor	
SPN	275	Introduction to Spanish Literature	3		SPAN	320	3	HUM		May not use to fulfill 300-level req in major/minor	
SPN	281	Topics in Spanish	3			Elective				Evaluated individually	
SUB		Substance Abuse Counseling/Prevention			No	Credit	0			No credit transfers from this department	
THE	100	Theatre Appreciation	3	F1 907	THEA	102	3	ART			
THE	110	Drama Performance Ensemble I	1-3		THEA	115	1				
THE	122	Intro Theatre History & Literature	3	F1 908	THEA	102	3	ART			
THE	124	American Drama	3	F1 909D	THEA	Elective	3	ART			
THE	132	Acting I	3		THEA	150	3				
THE	134	Improvisation for the Theatre	3		THEA	Elective	3				
THE	136	Acting II	3		THEA	250	3				
THE	142	Movement for the Stage	3		THEA	Elective	3			THE 142 + THE 144 = THEA 251	
THE	144	Voice and Speech for the Stage	3		THEA	Elective	3			THE 142 + THE 144 = THEA 251	
THE	150	Theatre Dance	3		THEA	120	3			THE 220 if taken twice; max 12 hrs total	
THE	160	Introduction to Theatre Technology	3		THEA	141	3				
THE	161	Scenic Design and Technology	3		THEA	241	3				
THE	162	Technical Theatre Practicum	3		THEA	115	3			A maximum of 6 hours of THEA 115 transfers	
THE	164	Lighting Design and Technology	3		THEA	242	3				
THE	166	Theatrical Sound Design & Technology	3		THEA	Elective					
THE	168	Stage Makeup	3		THEA	144	3				
THE	170	Stage Management	3		THEA	245	3				
THE	210	Literature Performance Ensemble	3		THEA	115	3			A maximum of 6 hours of THEA 115 transfers	
THE	231	Internship in Theatre	1			Elective				Evaluated individually	

**COURSE SUBSTITUTIONS FOR STUDENTS TRANSFERRING FROM ELGIN COMMUNITY COLLEGE TO NORTH CENTRAL COLLEGE**

*Based on the 2024-2025 Elgin Community College Catalog and the 2024-2025 North Central College Catalog*

<i>Elgin Community College Courses</i>					<i>NCC Courses</i>			<i>NCC General Education and Comments</i>			
DEPT	NUM	COURSE TITLE	SEM CRED	IAI EQUIV	Dept	Number	Credit	GENERAL EDUCATION			COMMENT
THE	232	Internship in Theatre	2			Elective					Evaluated individually
THE	233	Internship in Theatre	3			Elective					Evaluated individually
THE	234	Special Topics: Theatre	1			Elective					Evaluated individually
THE	235	Special Topics: Theatre	2			Elective					Evaluated individually
THE	236	Special Topics: Theatre	3			Elective					Evaluated individually
THE	241	Stage Combat	3		THEA	Elective	3				
THE	242	Stage Combat II	3		THEA	Elective	3				
THE	243	Stage Combat- Single Sword	3		No	Credit	0				
THE	244	Stage Combat- Small Sword	3		No	Credit	0				
THE	245	Stage Combat- Knife	3		No	Credit	0				
THE	246	Stage Combat- Quarterstaff	3		No	Credit	0				
THE	247	Stage Combat- Broadsword	3		No	Credit	0				
THE	248	Stage Combat- Sword & Shield	3		No	Credit	0				
WEL		Welding			No	Credit	0				No credit transfers from this department