



**Pathway to A Brilliant Future:
the North Central College Strategic Plan**

Adopted: May 2017



CORE VALUES

North Central College values a rigorous, student-centered education grounded in the liberal arts tradition with purposeful integration of professional studies and civic engagement. While at its core is a residential undergraduate institution, we value distinctive programs for graduate and non-traditional students. We govern ourselves in a shared model between faculty and administration, overseen by a Board of Trustees, and value academic freedom in the development and delivery of our curriculum.

We are a diverse, inclusive, and global community. We are an engaging and mentoring educational community that nurtures a culture of curiosity and fosters life-long learning. We have rigorous expectations of all students, of faculty as teachers and scholars, and of staff as partners in student success. We value quality, respect, and collaboration.

We value the development of the intellectual, the physical, and the spiritual human being. To that end, we encourage engaged civil discourse and dialogue on disparate viewpoints. We value the integration of the curricular, co-curricular, and athletic experiences. We value our alumni and their ongoing commitment to and engagement in our success. We value our affiliation with the United Methodist Church and its contribution to advancing the spiritual health of the campus in all its diversity.

We value our special and storied relationship with Naperville and the surrounding region as a community with which we share values of strong fiscal and environmental stewardship, an innovative and entrepreneurial spirit and a steadfast commitment to being destinations for success.

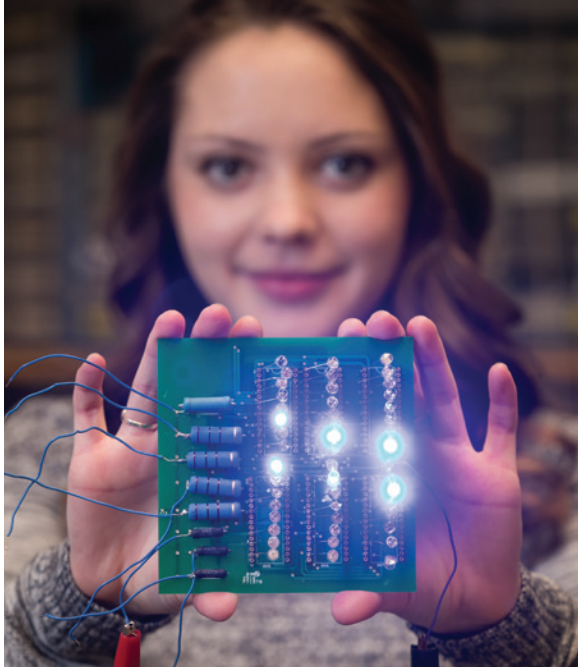
VISION STATEMENT

North Central College will be a national model of a transformative undergraduate education, enhanced with distinctive graduate and professional programs, in all things steadfastly committed to a liberal arts tradition.

MISSION STATEMENT

We are a diverse community of learners dedicated to preparing students to be curious, engaged, ethical, and purposeful citizens and leaders in local, national and global contexts.





STUDENT LEARNING AND SUCCESS

Provide a dynamic and integrated educational experience that fosters student learning and success at North Central College and beyond.

DIVERSITY, INCLUSION, GLOBAL ENGAGEMENT

Thrive as a diverse, inclusive, and globally engaged community, preparing students for action and leadership in a complex world.

COLLEGE OF DESTINATION

Be a College of destination, attracting exceptional faculty, students, staff and community partners.

CULTURE OF EXCELLENCE

Deliver exemplary operational and support services, committing to a culture of excellence and continuous improvement.

STRATEGIC IMPERATIVES & SUPPORTING STRATEGIES

Strategic Imperative # 1

Student Learning and Success

Provide a dynamic and integrated educational experience that fosters student learning and success at North Central College and beyond.

- » **Strategy A:** Using new College-wide learning outcomes, redesign the College's curriculum, leveraging a semester calendar and new general education core, to deepen and strengthen academic quality.
- » **Strategy B:** Build a pathway for all students to experience High-Impact Practices (HIPs) each year of their study by intentionally embedding such practices into the curriculum.
- » **Strategy C:** Integrate technology to enhance the effectiveness of teaching and learning, supporting a dynamic educational experience in and out of the classroom.
- » **Strategy D:** Differentiate the College by deepening the integration of academic and athletic experiences.
- » **Strategy E:** Develop a culture of creativity and risk-taking among faculty and staff for the purpose of improving student learning.

Strategic Imperative # 2

Diversity, Inclusion, Global Engagement

Thrive as a diverse, inclusive and globally engaged community, preparing students for action and leadership in a complex world.

- » **Strategy A:** Work toward a campus community that is welcoming and supportive of diversity and inclusion, is free from discrimination and models civil dialogue on social issues.
- » **Strategy B:** Expand immersive study away and international engagement opportunities that prepare students to be changemakers and leaders in national and global communities.
- » **Strategy C:** Enhance the recruitment and retention of diverse students, faculty and staff.

Strategic Imperative # 3

College of Destination

Be a College of destination, attracting exceptional faculty, students, staff and community partners.

- » **Strategy A:** Increase the number of external markers of academic quality.
- » **Strategy B:** Effectively communicate to diverse audiences the story of North Central as a College that offers a distinctive, differentiating and transformational educational experience.
- » **Strategy C:** Raise the College's profile in higher education throughout the Midwest and beyond.
- » **Strategy D:** Ensure that North Central is recognized as a cornerstone institution in the Naperville area.
- » **Strategy E:** Invest in professional development of our faculty and staff and reward excellence.

Strategic Imperative # 4

Culture of Excellence

Deliver exemplary operational and support services, committing to a culture of excellence and continuous improvement.

- » **Strategy A:** Maintain the affordability of a North Central education through efficiency and effectiveness in operational and support services.
- » **Strategy B:** Grow our resources to ensure long-term financial health.
- » **Strategy C:** Make a positive student experience a key objective for every function on campus.
- » **Strategy D:** Emphasize environmental sustainability as a defining and differentiating characteristic.



NORTH
CENTRAL
COLLEGE

NAPERVILLE, ILLINOIS
Founded 1861

